


RESEARCH ARTICLE

Open Access



Association between time spent in the Russian Federation and late presentation for HIV among Tajikistani migrants

Daniel J. Bromberg^{1,2}, Mary M. Tate³, Kamiar Alaei^{4,5}, Saifuddin Karimov⁶, Dilshod Saidi⁶ and Arash Alaei^{4*} 

Abstract

Background: Between 700 thousand and 1.2 million citizens of Tajikistan currently live in the Russian Federation, one of the only countries where the HIV epidemic continues to worsen. Given the previously reported barriers to healthcare access for migrants to the Russian Federation, and the rapidly expanding HIV epidemic in Eastern Europe and Central Asia, this present study set out to determine whether these barriers impact late presentation with HIV among Tajikistani migrants upon their return to Tajikistan.

Method: This study uses data from the Tajikistan Ministry of Health surveillance system (2006 – 2019). At time of diagnosis, patients are interviewed by staff of AIDS centers, and doctors complete routine intake forms and complete medical exams. Descriptive characteristics of migrants with HIV who had lived in the Russian Federation (n=503) were calculated and compared with those of non-migrants with HIV (n=9519). Missing data were imputed using multiple imputation (predictive means matching, logistic regression imputation, and polytomous regression imputation). Two logistic models were created to model the probability of late presentation for HIV. The first model shows unadjusted associations between predictor variables and late presentation for HIV. The second model shows multivariable associations between significant study variables identified in the univariate model, and late presentation.

Results: Compared to non-migrants, migrants with HIV are more likely to be from Gorno-Badakhshan region, are less likely to use illicit drugs, and are more likely to have purchased the services of sex workers. The unadjusted logistic model found that for every year spent in the Russian Federation, the risk of late presentation for a Tajikistani migrant with HIV increases by 4.0% (95% CI: 0.3-7.7). The multivariate model showed that when age, sex, and region of origin are held constant, the risk of late presentation for a Tajikistani migrant with HIV increases by 4.0% (95% CI: 0.1-7.8) for each year spent in the Russian Federation.

Conclusion: The results of this paper suggest that if the Russian Federation were to loosen its restrictions on HIV care for foreign nationals, it might improve the treatment outcomes of migrant laborers. As this analysis is only correlational in nature, further research is needed to explicate the causal pathways of the associations found in the present analysis.

Keywords: Eastern Europe and Central Asia, HIV, Migration

* Correspondence: alaeiarash@gmail.com

⁴Institute for International Health and Education, Albany, NY, USA

Full list of author information is available at the end of the article



© The Author(s). 2020 **Open Access** This article is licensed under a Creative Commons Attribution 4.0 International License, which permits use, sharing, adaptation, distribution and reproduction in any medium or format, as long as you give appropriate credit to the original author(s) and the source, provide a link to the Creative Commons licence, and indicate if changes were made. The images or other third party material in this article are included in the article's Creative Commons licence, unless indicated otherwise in a credit line to the material. If material is not included in the article's Creative Commons licence and your intended use is not permitted by statutory regulation or exceeds the permitted use, you will need to obtain permission directly from the copyright holder. To view a copy of this licence, visit <http://creativecommons.org/licenses/by/4.0/>. The Creative Commons Public Domain Dedication waiver (<http://creativecommons.org/publicdomain/zero/1.0/>) applies to the data made available in this article, unless otherwise stated in a credit line to the data.

Introduction

For the past decade, the Russian labor force has been progressively shrinking. As a result, the Russian labor supply has not been able to meet the labor demand required to maintain economic growth [1]. Economic analysis of data from the Russian Federal State Statistics Service predicts that the Russian Federation's current labor shortages will only increase if drastic policy measures are not taken to increase the labor force [2]. To maintain economic productivity, Russia relies on migration from former Soviet Union states, most notably from Central Asia. Central Asian labor migrants act as a fail-safe for the Russian economy in the context of a declining native-born working-age population, national financial instability, and international sanctions.

Migration has been a defining aspect of Central Asian social and economic structures since the fall of the Soviet Union. The Tajikistani civil war which accompanied the republic's independence in the 1990s instigated the first major flow of forced migrants from Central Asia in the post-Soviet period. The country never recovered economically, and today relies on the exportation of its labor force for a large portion of its economic output. In 2013, Tajikistan was the country with the world's greatest proportion of its GDP (41.7%) coming from remittances [3].

Media reports claim that, as of 2015, the Russian Federation has implemented stricter requirements for work permits, with special relevance for Tajik migrants. Tajik migrants must now pay relatively high fees (reportedly between \$200 and \$500 USD), prove sufficient proficiency in the Russian language, pass certain exams, and submit complicated paperwork in order to receive a valid work permit. As Tajik migrants can enter Russia without a visa, strict labor registration requirements arguably encourage illegal labor [4]. Without medical insurance or the right to care, as well as the fear of legal recourse if found to be working unregistered, it is very possible that Tajik migrants in the Russian Federation forgo much-needed HIV testing and treatment. Moreover, the Russian Federation restricts entry to the country based on HIV-status, presumably to protect the country from an exacerbated HIV epidemic, mirroring the former policy of the United States. A qualitative study conducted among migrants in Moscow revealed that, because of the Russian Federation's mandatory reporting of confirmed cases of HIV, at least some migrants refused HIV-tests out of fear of expulsion or refusal of re-entry into the Russian Federation [5].

Due to the ban on migrants with HIV in the country, migrants are generally unable to access HIV treatment or care through the Russian healthcare system. Although few alternative HIV treatment options exist, there are NGOs such as Moscow Based group "Shagi Foundation",

which works with HIV positive migrants to find solutions to any barriers they may face including the procurement of antiretroviral therapy through informal networks [6, 7]. There are also informal community-based healthcare providers, such as the so-called "Kyrgyz clinics", which specifically target Central Asian populations and provide them with a range of health care services and assistance with navigating the formal medical system in Russia [8].

Migrants must prove an HIV-negative status in order to obtain an annual work permit in Russia [9]. As citizens of the Commonwealth of Independent States, Tajik migrants can enter Russia without a visa and apply for a work permit after arrival to Russia [10]. Therefore, migrants who were infected pre-migration could enter and work in Russia without a work permit [7]. Working in Russia without a legal work permit, however, confines migrants to jobs within the black-market and bars them from accessing healthcare and other resources in the country.

In Tajikistan, HIV testing is readily available and prioritizes labor migrants [11]. After pregnant women, migrants (defined as all citizens who stay abroad for three months or more) constitute the largest portion of people tested [12]. As of 2018, returning migrants are required to undergo HIV testing upon re-entry to Tajikistan [13]. Recent qualitative data suggest that migrants who are diagnosed with HIV in Russia often choose to remain in the country until advanced symptoms force them to return to Tajikistan to seek adequate medical treatment and free ART, which is otherwise unavailable in the Russian Federation [7, 14].

Russia has higher HIV prevalence than Tajikistan among its adult population (>1% of the population vs 0.3, respectively) [11, 15]. Previous research also suggests that Central Asian migrants are more likely to engage in HIV risk behavior in Russia than at home [16]. An elevated incidence of HIV has also been recorded among wives of Tajik migrants following their husbands' return home [17]. The higher prevalence of HIV in Russia combined with the high-risk that Tajik migrants face in contracting the disease implies that migrants are more likely to become infected in Russia than in Tajikistan.

If Tajikistani migrants do not receive testing or treatment for HIV infections in the Russian Federation, they may face the health consequences associated with late presentation. Late presentation with HIV and subsequent late initiation into antiretroviral therapy increases the risk of HIV-related complications, reduces life expectancy and quality, and reduces the net benefits of ART generally. On the other hand, those virally suppressed on ART have virtually no risk of transmitting the virus to HIV-negative people [18]. Importantly for the public health of the Russian Federation, not initiating migrants in antiretroviral therapy may increase the

risk of HIV infection being spread even beyond migrant populations. The heightened vulnerability of migrants in Russia has the potential to spill-over beyond the boundaries of the Russian Federation and puts local population in home countries at heightened risk of an exacerbated HIV epidemic.

Additionally, studies conducted among migrants with HIV to European countries, suggests that a substantial proportion of migrants acquired HIV following migration to Europe [19, 20]. A cross-sectional study by Alvarez-del Arco, et al. showed that the proportion of post-migration acquisition of HIV among migrants to nine European countries was 63% overall, but as high as 79% for people who inject drugs (PWID) and 71% for men who have sex with men (MSM). The factors associated with post-migration acquisition among migrants to the nine European countries included length of stay with longer duration of residence tied to a higher probability of HIV post-migration acquisition [19]. Similar histories of migration pathways, social hardship, and healthcare barriers may indicate an epidemiological pattern of post-migration HIV acquisition applicable to Central Asia and the Russian Federation. Given the previously reported barriers to healthcare access for migrants in to the Russian Federation, and the rapidly expanding HIV epidemic in Eastern Europe and Central Asia, this present study set out to determine the characteristics of HIV-positive migrants

Methods

This study uses data from the Tajikistan Ministry of Health surveillance system. The dataset contains all new known HIV diagnoses between 2006 and 2019. Time of diagnosis is generally coincident with return to Tajikistan; in this sample, 94% of patients with HIV were diagnosed for the first time after their return to Tajikistan; and the median time from return to diagnosis was 6 months. Six percent of the sample reported being diagnosed for the first time before their return to Tajikistan; the median time from diagnosis to return for these patients was also 6 months. At time of diagnosis, patients are interviewed by staff of AIDS centers, complete routine intake forms and complete medical exam and related forms by doctors. As part of these routine intake forms, migration information from the patients' passports (including date of exit and re-entry to Tajikistan) are collected. These data give supplementary information on each patient's sexual history, alcohol and drug use, and migration history, in addition to other factors. Mean CD4 count is also taken at this time.

Late presentation was defined as any person who had a CD4 count lower than 200 cells/mL. People with HIV who had been migrants to the Russian Federation and

for whom complete migration data were available ($n = 503$) were included in final data analysis (Fig. 1). People with HIV who had not been migrants outside of Tajikistan were included as controls ($n = 9519$).

Descriptive statistics were calculated for migrants with HIV who had returned from the Russian Federation, as well as for non-migrants. Variables included in tabulation of descriptive statistics are demographic information, measures of HIV progression, HIV transmission route, HIV risk behavior, and non-HIV co-infections. To determine if there were statistically significant differences between migrants with HIV and non-migrants with HIV, p -values were calculated. For continuous variables that are normally distributed, these p -values correspond to a t -test. For continuous variables that are not normally distributed, MannWhitney U tests were performed. For categorical variables, p -values correspond to a Pearson Chi-Square test (Table 1).

Missing data were imputed using a multiple imputation model, in accordance with established multiple imputation guidelines [21, 22]. Before imputation, data were checked to determine if variables were missing completely at random (MCAR), missing at random (MCAR), missing at random (MAR). For variables that had missing data (Baseline CD4 Count [Late Presentation], Education, Relationship Status, and risk behavior variables), missingness analysis using the *finalfit* package in R was conducted [23]. The *finalfit* packages cross-tabulates independent and dependent variables, stratified by missingness (missing and not-missing), and then performs Chi-square tests to determine whether there are statistically significant differences among strata.

Using the *mice* package in R [24], missing data were imputed for all migrants with HIV. Data were checked for normality, and numeric variables were imputed using predictive mean matching (e.g., number of sexual partners in the last 12 months), binary data (e.g., late presentation) were imputed using logistic regression imputation, and unordered categorical data (e.g. education) were imputed using polytomous regression imputation. Using these methods, 50 imputed datasets were created. The models assumed MCAR where the missingness analysis showed no statistically significant difference in missingness by strata, and MAR for all other variables.

Two logistic models were created to model the probability of late presentation for each of the imputed data sets ($n = 50$). The estimates for each dataset were then pooled using Rubin's rule [25] to determine the final model parameters. The first model shows unadjusted associations between predictor variables and late presentation for HIV. The second model is a multivariable

Table 1 Characteristics of People Living with HIV in Tajikistan, Stratified by Migrants and Non-Migrants

	Non-Migrants N = 9519	Migrants N = 503	P-Value*
Region:			< 0.001
Badakhshan	398 (4.18%)	98 (19.5%)	
DRS	1939 (20.4%)	103 (20.5%)	
Dushanbe	2430 (25.5%)	40 (7.95%)	
Khatlon	2667 (28.0%)	129 (25.6%)	
Sughd	2085 (21.9%)	133 (26.4%)	
Age (mean)	37.2 (13.4)	39.6 (8.30)	< 0.001
Age (Categorical):			< 0.001
< 18	1120 (11.8%)	0 (0.00%)	
18–24	247 (2.59%)	10 (1.99%)	
25–34	1991 (20.9%)	152 (30.2%)	
35–44	3324 (34.9%)	201 (40.0%)	
45–55	2175 (22.8%)	117 (23.3%)	
55<	662 (6.95%)	23 (4.57%)	
Percent Female	40% (0.49)	16% (0.37)	< 0.001
Transmission Route:			
Heterosexual	4834 (50.8%)	406 (80.7%)	
Injection drug use	3219 (33.8%)	92 (18.3%)	
Male-to-Male Sexual	36 (0.38%)	4 (0.80%)	
Relationship Status:			< 0.001
Divorced	1048 (11.8%)	56 (11.5%)	
Married	4583 (51.7%)	344 (70.9%)	
Unmarried	2761 (31.1%)	60 (12.4%)	
Widowed	380 (4.29%)	17 (3.51%)	
Education:			< 0.001
Elementary	180 (2.12%)	6 (1.25%)	
High school	6498 (76.4%)	353 (73.5%)	
None	815 (9.58%)	7 (1.46%)	
Specialized high school	416 (4.89%)	80 (16.7%)	
Unfinished high school	304 (3.57%)	5 (1.04%)	
Unfinished University	80 (0.94%)	8 (1.67%)	
University Degree	214 (2.52%)	21 (4.38%)	
Employment:			< 0.001
Employed	555 (5.83%)	86 (17.1%)	
Incarcerated	207 (2.17%)	1 (0.20%)	
Military	18 (0.19%)	0 (0.00%)	
None	8300 (87.2%)	413 (82.1%)	
Other	87 (0.91%)	1 (0.20%)	
Retired	26 (0.27%)	1 (0.20%)	
Student	308 (3.24%)	0 (0.00%)	
Student (higher education)	17 (0.18%)	1 (0.20%)	
Ever had Male-to-Male Sexual Contact:			0.688

Table 1 Characteristics of People Living with HIV in Tajikistan, Stratified by Migrants and Non-Migrants (Continued)

	Non-Migrants N = 9519	Migrants N = 503	P-Value*
No	5903 (98.4%)	415 (98.8%)	
Yes	94 (1.57%)	5 (1.19%)	
Ever used Illicit Drugs:			< 0.001
No	5942 (64.7%)	400 (79.7%)	
Yes	3240 (35.3%)	102 (20.3%)	
Baseline_CD4 (mean)	390 (305)	340 (213)	< 0.001
Late Presentation (CD4 < 200) at Diagnosis:			0.505
No	3900 (73.2%)	234 (71.3%)	
Yes	1429 (26.8%)	94 (28.7%)	
Number of Sexual Partners in the Last 12 Months (mean)	2.29 (3.11)	3.05 (2.87)	< 0.001
Percent AntiHCV Positive	27% (0.44)	30% (0.46)	0.393
Percent TB Positive (Syndromic)	2% (0.14)	2% (0.15)	0.811
Percent HBsAg Positive	7% (0.26)	6% (0.25)	0.615
Ever Purchases Services of a Sex Worker:			< 0.001
No	4392 (68.3%)	247 (50.7%)	
Yes	1827 (28.4%)	209 (42.9%)	

*For continuous variables that are normally distributed, a t-test is performed to calculate p-values. For continuous variables that are not normally distributed, MannWhitney U is performed. For categorical variables, p-values correspond to a Pearson Chi-Square test

logistic model which shows multivariable association between only those study variables found to be influential in the univariate model, as well as region of origin and gender, and late presentation. Data analysis was conducted using R Studio Version 4.0 [26].

Results

Five hundred and three returned migrants with HIV were included in this study. Most of the sample is male (86%), and roughly representative of the five regions of Tajikistan, although relatively fewer of the migrants are from the capital, Dushanbe (8%). Compared with non-migrants with HIV, they are significantly more likely to be from Gorno-Badakhshan region, are less likely to get HIV from injection drug use or have ever used illicit drugs, are more likely to have purchased the services of sex workers, and have more sexual partners on average. About a fifth of the migrants reported to be people who inject drugs (PWID) (Table 1).

Missingness analysis showed that late presentation information is more likely to be missing among migrants from Gorno-Badakhshan region, migrants between the

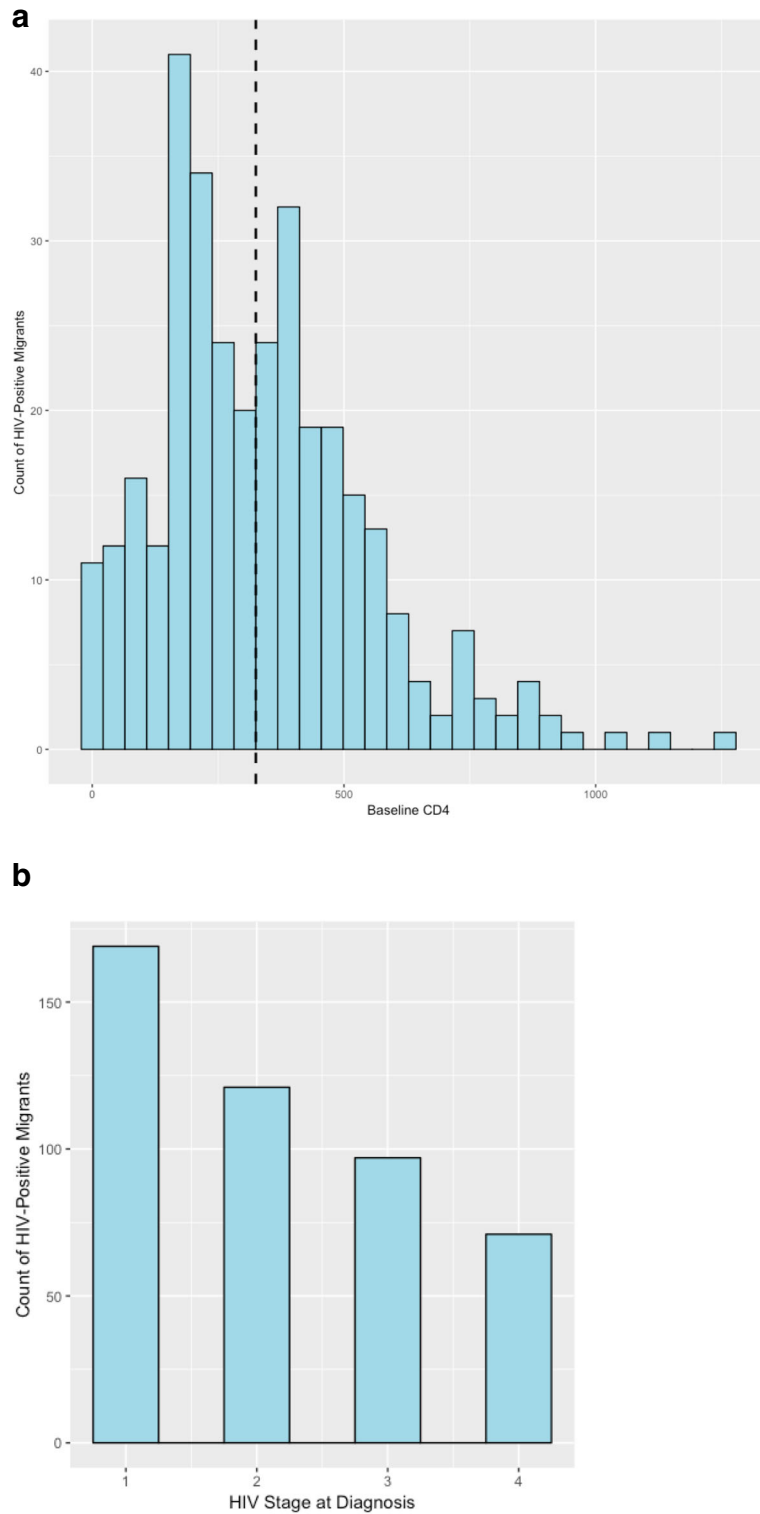


Fig. 1 a Distribution of Baseline CD4 Counts for Returned Migrants with HIV (Median CD4 = 325). **b** Distribution of Clinical Stage of HIV at Diagnosis Legend: HIV Stages at Diagnosis (1 = asymptomatic [37%], 2 = Mild Symptoms [26%], 3 = Advanced Symptoms [21%], 4 = AIDS [16%])

Table 2 Missingness analysis for the Late Presentation variable. Categories for which the Late Presentation variable is not missing completely at random (MCAR) are in bold. P-values correspond to a chi-square test

Category	Category	Not Missing	Missing	P-value
Age	18–24	9 (2.7)	1 (0.6)	0.017
	25–34	110 (33.5)	42 (24.0)	
	35–44	127 (38.7)	74 (42.3)	
	45–54	65 (19.8)	52 (29.7)	
	> 55	17 (5.2)	6 (3.4)	
Region	Badakhshan	46 (14.0)	52 (29.7)	< 0.0001
	DIRS	74 (22.6)	29 (16.6)	
	Dushanbe	26 (7.9)	14 (8.0)	
	Khatlon	88 (26.8)	41 (23.4)	
	Sughd	94 (28.7)	39 (22.3)	
Sex	Male	272 (82.9)	150 (85.7)	0.495
	Female	56 (17.1)	25 (14.3)	
Education	Elementary	3 (1.0)	3 (1.8)	0.326
	High school	238 (76.0)	115 (68.9)	
	None	6 (1.9)	1 (0.6)	
	Specialized high school	45 (14.4)	35 (21.0)	
	Unfinished high school	2 (0.6)	3 (1.8)	
	Unfinished University	5 (1.6)	3 (1.8)	
	University Degree	14 (4.5)	7 (4.2)	
Relationship Status	Single	13 (4.2)	12 (6.9)	0.010
	Divorced	38 (12.2)	18 (10.4)	
	Married	230 (73.7)	114 (65.9)	
	Other	5 (1.6)	1 (0.6)	
	Unmarried (Not Single)	14 (4.5)	21 (12.1)	
	Widowed	12 (3.8)	5 (2.9)	
Transmission Route	Heterosexual	282 (86.0)	124 (70.9)	< 0.001
	Injection Drug Use	41 (12.5)	51 (29.1)	
	Male-to-Male Sexual	4 (1.2)	0 (0.0)	
Employment	Employed	65 (19.8)	21 (12.0)	0.132
	Unemployed	260 (79.3)	153 (87.4)	
Ever had Male-to-Male Sexual Contact	No	267 (98.2)	148 (100.0)	0.235
	Yes	5 (1.8)	0 (0.0)	
Ever used Illicit Drugs	No	279 (85.3)	121 (69.1)	
	Yes	48 (14.7)	54 (30.9)	
Ever Purchased Services of Sex Worker	No	154 (48.4)	93 (55.0)	0.259
	Yes	145 (45.6)	64 (37.9)	

Table 3 Unadjusted associations between study variables and probability of late presentation for HIV ($n = 503$)

Characteristic	OR (95% Confidence)	P-value
Region of Origin		
Badakhshan	1.00	
Districts of Republican Subordination	0.9 (0.4–1.8)	0.8
Dushanbe	0.9 (0.4–2.4)	0.9
Khatlon	0.9 (0.4–1.8)	0.7
Sughd	0.7 (0.4–1.5)	0.4
Current Age (years)		
18–24	1.00	
25–34	2.1 (0.2–17.5)	0.5
35–44	3.5 (0.4–29.1)	0.2
45–54	4.5 (0.5–38.3)	0.2
> 55	15.9 (1.6–160.2)	0.02**
<i>As continuous*</i>	1.06 (1.03–1.09)	0.0001***
Time Spent in Russia		
Less than 5 years	1.00	
5–15 years	1.5 (0.9–2.4)	0.1
15 years or more	1.9 (1.0–3.7)	0.05**
<i>As continuous*</i>	1.04 (1.003–1.077)	0.03***
Sex		
Male	1.00	
Female	0.7 (0.3–1.3)	0.3
Education		
Elementary	1.00	
High school	1.2 (0.1–11.1)	0.9
None	0.6 (0.0–11.0)	0.8
Specialized High School	1.0 (0.1–10.3)	0.8
Unfinished High School	1.4 (0.06–34.5)	1.0
Unfinished University	1.6 (0.1–27.1)	0.8
University Degree	1.7 (0.1–21.1)	0.7
Employment Status		
Employed	1.00	
Unemployed	1.3 (0.7–2.4)	0.4
Relationship Status		
Single	1.00	
Divorced	2.9 (0.5–17.7)	0.3
Married	2.4 (0.4–13.4)	0.3
Widowed	4.4 (0.6–32.7)	0.1
Transmission Route		
Heterosexual	1.00	
Injection Drug Use	1.4 (0.7–2.5)	0.3
Male-to-Male Sexual	0.0 (undefined)	0.1
Number of Sexual Partners in Last 12 months		
<i>As continuous*</i>	1.0 (0.9–1.1)	0.8

Table 3 Unadjusted associations between study variables and probability of late presentation for HIV ($n = 503$) (Continued)

Characteristic	OR (95% Confidence)	P-value
Risk Behavior & Misc.		
Ever used illicit drugs		
No	1.00	
Yes	0.3 (–0.3–0.9)	0.3
Ever had Male-to-Male Sexual Contact		
No	1.00	
Yes	–13.6 (–1207.8–1180.7)	1.0
Ever Purchased Services of Sex Worker		
No	1.00	
Yes	0.2 (–0.3–0.6)	0.4

ages of 45 and 54, and among those whose HIV transmission was through injection drug use. The results of the missingness analysis for the variable Late Presentation are presented in (Table 2). For all other variables, missingness was less than 5% of the set and all variables were MCAR.

Two logistic models were created to model the probability of late presentation. The unadjusted logistic model found that for every year spent in the Russian Federation, the risk of late presentation for a Tajikistani migrant with HIV increases by 4.0% (95% CI: 0.3–7.7) (Table 3). The multivariable model showed that when holding age, region of origin, and gender constant, the risk of late presentation for an HIV-positive Tajikistani migrant increases by 4.0% (95% CI: 0.1–7.8) for each

Table 4 Multivariable logistic regression model of factors associated with late presentation for HIV ($N = 503$)

Characteristic	Adjusted OR (95% CI)	p
Time Spent in Russia		
	1.04 (1.001–1.078)	0.04*
Age		
18–24	1.00	
25–34	2.2 (0.3–19.3)	0.5
35–44	3.7 (0.4–31.9)	0.2
45–54	4.6 (0.5–40.1)	0.2
> 55	18.3 (1.7–195.7)	0.02**
Sex		
Male	1.00	
Female	0.7 (0.3–1.4)	0.3
Region of Origin		
Badakhshan	1.00	
DRS	1.0 (0.5–2.2)	1.0
Dushanbe	0.9 (0.4–2.9)	0.9
Khatlon	0.9 (0.5–2.2)	1.0
Sughd	0.7 (0.4–1.8)	0.6

year spent in the Russian Federation (Table 4). Common HIV-risk behaviors like number of sexual partners in the last 12 months, drug or alcohol use, or sex with commercial sex workers, were not found to be statistically significant predictors of late presentation for HIV in either iteration of the logistic model.

Discussion

This study established that the only statistically significant variable in predicting late presentation for HIV among returned Tajik migrant workers, other than age, is their time spent in the Russian Federation. For every year spent in the Russian Federation, the risk of late presentation for HIV increases by 4.0%. Interestingly, risk behavior was not found to predict late presentation. The implication of this finding is that structural factors in the Russian Federation, and not migrants' behavior, is the most important factor affecting HIV treatment outcomes. With the average person in the present sample spending a median 7 years in the Russian Federation, this risk has significant implications for individual and public health, in both Tajikistan and the Russian Federation, as well as Eastern Europe and Central Asia more broadly. The findings of this study support the authors' hypothesis that Russia's policies that deny or discourage HIV testing and treatment are more important in affecting the HIV epidemic among migrant workers than are behavioral factors of the migrants themselves.

In the early days of the epidemic, HIV initially spread along migration routes [27–29]. A systematic review by Weine, et al. showed that prolonged or frequent absences were among the most frequently cited determinants of HIV risk in studies involving labor migrants [30]. Indeed, length of time spent away from home has been shown to be a strong predictor of HIV positive status in several international settings [31–33]. A previous study based on large surveys of male migrants in the Russian Federation has found that difficulty in accessing healthcare services and limited health education contributed to Tajik migrants' HIV vulnerability [17]. Other studies have shown high levels of HIV-related risk behavior among Tajik migrants to Russia [16, 34], including sex with commercial sex workers, sex with multiple partners, and excessive alcohol use. Unlike these past studies, the present findings found no association between these risk behaviors and HIV treatment outcomes.

The domestic economies of the Russian Federation and Tajikistan are reliant to different degrees on migrant labor. As of 2013, between 700 thousand and 1.2 million Tajik workers were living and working in Russia, with remittances constituting 41% of the Tajikistan's GDP [3, 35]. It is in the economic interest of both the Tajikistani and Russian governments to ensure the health and

wellbeing of Tajik migrant workers. As barriers to legal residency status are ample [36, 37] the Russian government should take appropriate legal action to ensure the ability of Tajik workers to obtain legal work permits. A legal working status allows migrant laborers to have greater access to the state healthcare system and has also been shown to reduce occurrences of racial discrimination against Central Asian migrants, which often act as a barrier in accessing healthcare (ibid). Preventative HIV measures would also need to be better resourced and integrated into the Russian healthcare system. These measures should include HIV education, promotion of condom use, regular HIV testing and access to clean needles for people who inject drugs. In improving HIV treatment outcomes and preventing late presentation, the Russian government should also consider the difficulty in obtaining antiretroviral therapy for migrant workers, especially those without a legal working status. It is also important to recognize the experience of racism and ethnoracial harassment in the Russian Federation [10]. Instances of informal racism transcend any legal and social protections imposed on migrant laborers by the Russian state. Although informal racism has been recorded to occur less in instances of legal working status [10, 36], Central Asian labor migrants continue to report a high occurrence of racialized harassment and prejudice in and outside their work environment (ibid). Socio-structural barriers, created by discrimination, act as deterrents in accessing preventative HIV measures and are linked to increased HIV risk among migrant laborers. The Russian government will have to address the broader cultural, social and political factors associated with informal racism to remove the socio-structural barriers related to increased HIV risk [36].

While the present study used data from a large and comprehensive dataset and most potential confounders were accounted for, regression models are limited in their ability to prove causality. Information on risk behavior were reported directly from medical reports rather than patients. The reliability of medical reports may have been compromised, particularly in reporting of injection drug use (IDU), as high levels of hepatitis C infection suggest that the level of IDU is higher than reported.

Missingness analysis found some bias in the record keeping of late presentation at diagnosis. Notably, records of late presentation were more likely to be missing among PWID, middle-age individuals, and people from Gorno-Badakhshan. Gorno-Badakhshan is the poorest and most remote region of Tajikistan, with a predominantly Isma'ili Shi'a population that often faces ostracism from other sectors of the country. It is reasonable that the HIV centers in this region are less equipped to keep ideal records of HIV cases. As drug use is heavily

stigmatized, PWID are perhaps less likely to be linked to care following diagnosis and may be less likely to consent to CD4 count screening. While it is unlikely that these omissions systematically biased the results of the present paper, the reporting flaws point to opportunities for HIV record keeping improvement in Tajikistan.

Due to heavy stigma, MSM are also likely underreported in the present sample. Recent literature has shown that stigma, fear of disclosure, and limited access to healthcare has prevented MSM from accessing HIV testing in Tajikistan [38]. As such, to conduct robust research on HIV among Tajik MSM and reduce bias in the future, multi-level anti-stigma interventions [39] should be enacted in the country. The timing of diagnosis following arrival (a left-skewed distribution with a median of 6 months) suggests selective return-migration of migrants experiencing HIV symptoms. The selective return of less healthy migrants, a so-called “salmon bias”, may partially explain why returned migrants are more likely to be late presenters for HIV when compared to non-migrants [40–42]. For these reasons, the authors of the present study urge for more research to explore the mechanisms underlying the associations presented in the present study. Future research can use causal inference and qualitative methodologies to supplement the present findings.

Conclusion

The government of Tajikistan has no policy of deporting people with HIV, and the Republican AIDS Center provides testing and treatment to all people, including migrants, regardless of their nationality. The results of this paper suggest that if the Russian Federation were to adopt a similar policy, it might improve the treatment outcomes of migrant laborers. Further research is needed to explicate the causal pathways of the associations found in the present analysis.

Acknowledgements

The authors would like to acknowledge the Tajikistan Ministry of Health and Republican AIDS Center for their support in providing the dataset used in this analysis, reviewing several iterations of the manuscript, and general support in conducting this research. Abstract has been published in the European journal of public health [43].

Declaration

The authors declare that they have no competing interests.

Authors' contributions

DJB and AA designed the study. DJB, AA and MMT conducted the statistical analysis and wrote the initial manuscript with substantial input from AA, KA, SK, and DS. All authors approved the final manuscript.

Funding

No funding was received for any portion of the data collection, treatment of patients, interventions or any other related activities involved in creation of Tajikistan's HIV surveillance system or the system's corresponding dataset. These activities are solely the responsibility of Tajikistan's government and Ministry of Health and receive no funding from outside sources.

Daniel Bromberg's doctoral studies, and therefore time allocated to this paper, was supported by funding from the United States' National Institute of Mental Health (T32 MH20031). The content is solely the responsibility of the authors and does not necessarily represent the official views of the National Institute of Mental Health or the National Institutes of Health.

Availability of data and materials

The data that support the findings of this study are the property of the Ministry of Health of Tajikistan and are not publicly available. Dr. S Karimov and D. Saidi co-authors are staff of the Tajikistan Ministry of Health and had permission to access to the data and analyze it in collaboration with other authors.

Ethics approval and consent to participate

Not applicable. This is a secondary analysis of a de-identified dataset and therefore does not require ethical approval.

Consent for publication

Not applicable.

Competing interests

The authors declare that they have no competing interests.

Author details

¹Department of Social and Behavioral Sciences, Yale School of Public Health, Yale University, New Haven, CT, USA. ²Center for Interdisciplinary Research on AIDS (CIRA), Yale University, New Haven, CT, USA. ³Department of Epidemiology of Microbial Diseases, Yale School of Public Health, Yale University, New Haven, CT, USA. ⁴Institute for International Health and Education, Albany, NY, USA. ⁵Department of Health Sciences, California State University, Long Beach, USA. ⁶Republican AIDS Center, Tajikistan Ministry of Health, Dushanbe, Tajikistan.

Received: 21 May 2020 Accepted: 24 August 2020

Published online: 10 September 2020

References

- Korovkin A, Dolgova I, Korolev I. Labor shortage in the Russian economy: a macroeconomic estimate. *Stud Russ Econ Dev.* 2006;17(4):365–76.
- Kluge J. Mounting pressure on Russia's government budget: financial and political risks of stagnation; 2019.
- Ratha D. Migration and Remittances Factbook 2016: Third Edition. ISBN: 978-1-4648-0319-2 e-ISBN: 978-1-4648-0320-8.
- Tajiks Face New Obstacles to Work in Russia [press release]. Institute for War and Peace Reporting 2015.
- Wirtz A, Zelaya C, Peryshkina A, Latkin C, Mogilnyi V, Galai N, et al. Social and structural risks for HIV among migrant and immigrant men who have sex with men in Moscow, Russia: implications for prevention. *AIDS Care.* 2014;26(3):387–95.
- SwanNet. "Shagi" (Steps) Foundation 2018. Available from: <http://swannet.org/en/members/shagi-steps-foundation>.
- Kashnitsky D. The Russian HIV residence ban in the context of state control of migration. 2020 [Publication Pending].
- Kashnitsky D, Demintseva E. "Kyrgyz clinics" in Moscow: medical centers for central Asian migrants. *Med Anthropol.* 2018;37(5):401–11.
- Schenk C. Why control immigration?: strategic uses of migration Management in Russia: University of Toronto Press; 2018.
- Agadjanian V, Menjivar C, Zotova N. Legality, racialization, and immigrants' experience of ethnoracial harassment in Russia. *Soc Probl.* 2017;64(4):558–76.
- Mansfeld M, Ristola M, Klinte J, Bultman J, Kastelic A, Rotberga S. HIV programme review in Tajikistan; 2015.
- Laukamm-Josten U, Lali K, Baktygul A, Svetlana A, Svetlana C, Lella C, et al. HIV/AIDS in Tajikistan. 2014.
- Ahmadi MN, Farangis Three Days Without Unprotected Sex – A Rule, Not The Norm For Returning Tajik Migrants Radio Free Europe 2018. Available from: <https://www.rferl.org/a/tajikistan-three-days-without-unprotected-sex-a-rule-not-the-norm-for-returning-migrants/29281608.html>.
- Daniel J Bromberg MMT, Julia Rozanova, D Saifuddin Karimov, Dilshod Saidi, Kamiar Alaei, Frederick L Altice , Arash Alaei. "Who are you and what are you doing here?": Barriers to Movement along the HIV Cascade of Care

- among HIV-positive Tajikistani Migrants to Russia. 2020 [Publication Pending].
15. HIV/AIDS JUNPo. AIDSinfo. Available at: aidsinfo.unaids.org Accessed. 2017; 31.
 16. Weine S, Bahromov M, Loue S, Owens L. HIV sexual risk behaviors and multilevel determinants among male labor migrants from Tajikistan. *J Immigr Minor Health*. 2013;15(4):700–10.
 17. Amirhanian YA, Kuznetsova AV, Kelly JA, DiFranceisco WJ, Musatov VB, Avsukevich NA, et al. Male labor migrants in Russia: HIV risk behavior levels, contextual factors, and prevention needs. *J Immigr Minor Health*. 2011;13(5): 919–28.
 18. Cohen MS, Chen YQ, McCauley M, Gamble T, Hosseinipour MC, Kumarasamy N, et al. Antiretroviral therapy for the prevention of HIV-1 transmission. *N Engl J Med*. 2016;375(9):830–9.
 19. Alvarez-del Arco D, Fakoya I, Thomadakis C, Pantazis N, Touloumi G, Gennotte A-F, et al. High levels of postmigration HIV acquisition within nine European countries. *Aids*. 2017;31(14):1979–88.
 20. Desgrees-du-Lou A, Pannetier J, Ravalihasy A, Gosselin A, Supervie V, Panjo H, et al. Sub-Saharan African migrants living with HIV acquired after migration, France, ANRS PARCOURS study, 2012 to 2013. 2015.
 21. Sterne JA, White IR, Carlin JB, Spratt M, Royston P, Kenward MG, et al. Multiple imputation for missing data in epidemiological and clinical research: potential and pitfalls. *Bmj*. 2009;338:b2393.
 22. Rezvan PH, Lee KJ, Simpson JA. The rise of multiple imputation: a review of the reporting and implementation of the method in medical research. *BMC Med Res Methodol*. 2015;15(1):30.
 23. Harrison ED, Ots T, Riinu. Package 'finalfit': Quickly Create Elegant Regression Results Tables and Plots when Modelling. CRAN; 2020.
 24. Sv B, Groothuis-Oudshoorn K. mice: Multivariate imputation by chained equations in R. *Journal of statistical software*; 2010. p. 1–68.
 25. Rubin DB. Multiple imputation for survey nonresponse. New York: Wiley; 1987.
 26. Allaire J. RStudio: integrated development environment for R. Boston, MA; 2012. p. 537–8.
 27. Jochelson K, Mothibeli M, Leger J-P. Human immunodeficiency virus and migrant labor in South Africa. *Int J Health Serv*. 1991;21(1):157–73.
 28. Pison G, Le BG, Lagarde E, Enel C, Seck C. Seasonal migration: a risk factor for HIV infection in rural Senegal. *J Acquir Immune Defic Syndr*. 1993;6(2): 196–200.
 29. Hunt CW. Migrant labor and sexually transmitted disease: AIDS in Africa. *J Health Soc Behav*. 2014;26(3):387–95. <https://doi.org/10.1080/09540121.2013.819407>. Epub 2013 Jul 23.
 30. Weine SM, Kashuba AB. Labor migration and HIV risk: a systematic review of the literature. *AIDS Behav*. 2012;16(6):1605–21.
 31. Dzomba A, Tomita A, Vandormael A, Govender K, Tanser F. Effect of ART scale-up and female migration intensity on risk of HIV acquisition: results from a population-based cohort in KwaZulu-Natal, South Africa. *BMC Public Health*. 2019;19(1):196.
 32. Saggurti N, Nair S, Malviya A, Decker MR, Silverman JG, Raj A. Male migration/mobility and HIV among married couples: cross-sectional analysis of nationally representative data from India. *AIDS Behav*. 2012;16(6):1649–58.
 33. Lydié N, Robinson NJ, Ferry B, Akam E, De Loenzien M, Abega S, et al. Mobility, sexual behavior, and HIV infection in an urban population in Cameroon. *JAIDS J Acquired Immune Deficiency Syndromes*. 2004;35(1):67–74.
 34. Weine S, Bahromov M, Mirzoev A. Unprotected Tajik male migrant workers in Moscow at risk for HIV/AIDS. *J Immigr Minor Health*. 2008;10(5):461–8.
 35. Ryazantsev S. Labour Migration from Central Asia to Russia in the Context of the Economic Crisis. *Russia in Global Affairs*. 2016;8(03).
 36. Zabrocki C, Weine S, Chen S, Brajkovic I, Bahromov M, Loue S, et al. Socio-structural barriers, protective factors, and HIV risk among Central-Asian female migrants in Moscow. *Central Asian J Global Health*. 2013;2(1).
 37. Europe Co. European commission against racism and intolerance (ECRI), ECRI report on the Russian Federation (fourth monitoring cycle) 2013. Available from: <https://www.refworld.org/docid/584ea0224.html>.
 38. Ibragimov U, Wong FY. Qualitative examination of enacted stigma towards gay and bisexual men and related health outcomes in Tajikistan, Central Asia. *Global Public Health*. 2018;13(5):597–611.
 39. Lelutiu-Weinberger C, Manu M, Ionescu F, Dogaru B, Kovacs T, Dorobăntescu C, et al. An mHealth intervention to improve young gay and bisexual men's sexual, behavioral, and mental health in a structurally stigmatizing national context. *JMIR mHealth and uHealth*. 2018;6(11):e183.
 40. Abraido-Lanza AF, Dohrenwend BP, Ng-Mak DS, Turner JB. The Latino mortality paradox: a test of the "salmon bias" and healthy migrant hypotheses. *Am J Public Health*. 1999;89(10):1543–8.
 41. Turra CM, Elo IT. The impact of salmon bias on the Hispanic mortality advantage: new evidence from social security data. *Popul Res Policy Rev*. 2008;27(5):515.
 42. Lu Y, Qin L. Healthy migrant and salmon bias hypotheses: a study of health and internal migration in China. *Soc Sci Med*. 2014;102:41–8.
 43. <https://doi.org/10.1093/eurpub/ckz187.019>.

Publisher's Note

Springer Nature remains neutral with regard to jurisdictional claims in published maps and institutional affiliations.

Ready to submit your research? Choose BMC and benefit from:

- fast, convenient online submission
- thorough peer review by experienced researchers in your field
- rapid publication on acceptance
- support for research data, including large and complex data types
- gold Open Access which fosters wider collaboration and increased citations
- maximum visibility for your research: over 100M website views per year

At BMC, research is always in progress.

Learn more biomedcentral.com/submissions

