

CORRECTION

Open Access



# Correction to: Patient-level factors are more salient than a legislation prohibiting minors in bars in predicting unintentional injury hospitalizations

Imelda K. Moise<sup>1\*</sup>, Evan de Joya<sup>1</sup>, Vinicius Okada Silva<sup>2</sup>, Vanji Moise<sup>3</sup>, Didi Bertrand Farmer<sup>4</sup> and Adelisa Orantia<sup>5</sup>

**Correction to: *BMC Public Health* (2019) 19:1010**  
<https://doi.org/10.1186/s12889-019-7327-7>

It was highlighted that in the original article [1] Fig. 1 and Fig. 2 were interchanged. This Correction article shows the correct Fig. 1 and Fig. 2. The original article has been updated.

#### Author details

<sup>1</sup>Department of Geography, University of Miami, 1300 Campo Sano Ave, Coral Gables, FL 33124, USA. <sup>2</sup>Case Western Reserve University, 10900 Euclid Ave, Cleveland, OH 44106, USA. <sup>3</sup>Eastern University, 1300 Eagle Road, St Davids, PA 19087, UK. <sup>4</sup>Partners In Health, 800 Boylston Street, Boston, MA 02199, USA. <sup>5</sup>Division of EMS and Highway Safety, Illinois Department of Public Health, Springfield, IL 62701, USA.

Published online: 14 August 2019

#### Reference

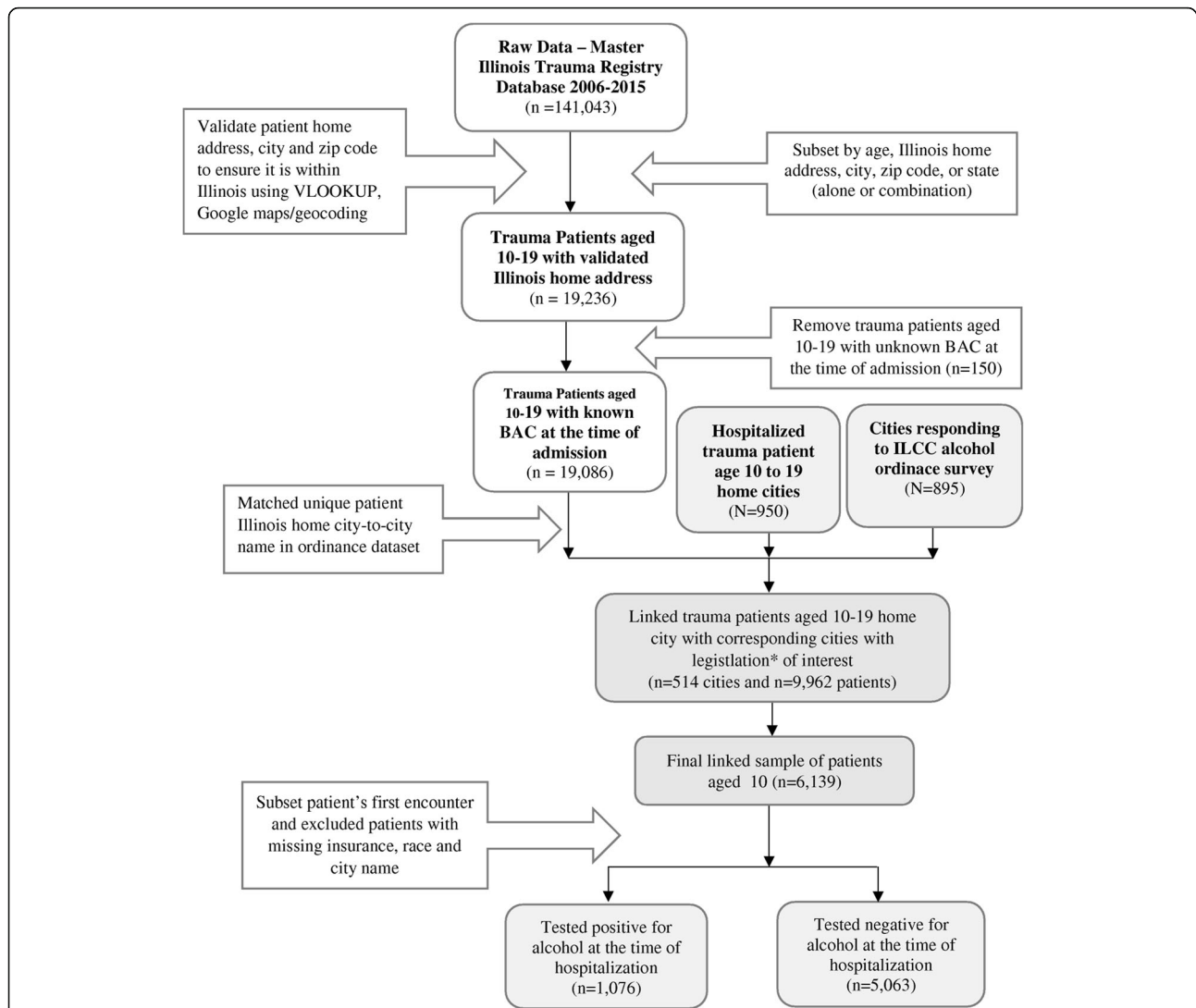
1. Moise, et al. Patient-level factors are more salient than a legislation prohibiting minors in bars in predicting unintentional injury hospitalizations. *BMC Public Health*. 2019;19:1010. <https://doi.org/10.1186/s12889-019-7327-7>.

\* Correspondence: [moise@miami.edu](mailto:moise@miami.edu)

<sup>1</sup>Department of Geography, University of Miami, 1300 Campo Sano Ave, Coral Gables, FL 33124, USA

Full list of author information is available at the end of the article





**Fig. 1** Flow chart indicating data processing steps for deriving the final study population of 6139 patients aged 10 to 19 hospitalized at 11 Level I or Level II trauma centers in Illinois, 2006–2015

