

RESEARCH ARTICLE

Open Access



Temporal evolution of brain cancer incidence in the municipalities of Navarre and the Basque Country, Spain

María Dolores Ugarte^{1,2*}, Aritz Adin^{1,2}, Tomás Goicoa^{1,2,3}, Itziar Casado⁴, Eva Ardanaz^{4,5} and Nerea Larrañaga^{5,6}

Abstract

Background: Brain cancer incidence rates in Spain are below the European's average. However, there are two regions in the north of the country, Navarre and the Basque Country, ranked among the European regions with the highest incidence rates for both males and females. Our objective here was two-fold. Firstly, to describe the temporal evolution of the geographical pattern of brain cancer incidence in Navarre and the Basque Country, and secondly, to look for specific high risk areas (municipalities) within these two regions in the study period (1986–2008).

Methods: A mixed Poisson model with two levels of spatial effects is used. The model also included two levels of spatial effects (municipalities and local health areas). Model fitting was carried out using penalized quasi-likelihood. High risk regions were detected using upper one-sided confidence intervals.

Results: Results revealed a group of high risk areas surrounding Pamplona, the capital city of Navarre, and a few municipalities with significant high risks in the northern part of the region, specifically in the border between Navarre and the Basque Country (Gipuzkoa). The global temporal trend was found to be increasing. Differences were also observed among specific risk evolutions in certain municipalities.

Conclusions: Brain cancer incidence in Navarre and the Basque Country (Spain) is still increasing with time. The number of high risk areas within those two regions is also increasing. Our study highlights the need of continuous surveillance of this cancer in the areas of high risk. However, due to the low percentage of cases explained by the known risk factors, primary prevention should be applied as a general recommendation in these populations.

Keywords: Brain cancer incidence, Small areas, Space-time models, Relative risks

Background

Several studies have pointed out that the Autonomous Regions of Navarre and Basque Country show higher brain cancer incidence [1] and mortality [2, 3] risks than the rest of the Spanish regions. According to the latest estimated data published by the GLOBOCAN project, in 2012 a total of 2,056 and 1,661 new brain cancer cases were diagnosed in Spanish male and female population respectively, representing 6.1 and 4.2 cases per 100,000 inhabitants (age-standardized rates adjusted to world population) [4]. Although these rates are below the European average (6.3 and 4.6 in males and

females respectively), data from the International Agency for Research on Cancer (IARC) showed that during the period 2003–2007, brain cancer incidence rates in Navarre and Basque Country provinces were among the highest rates registered for all regions and both genders [5]. With the aim of determining the possible causes that explain these high risk clusters in Spain, an exhaustive geographical study of the potential influence of land use variables was assessed [6]. No evidence on the possible association between the specific type of crop or land use and the distribution of the disease was found. Recently, a study of brain and central nervous system (CNS) cancer incidence in Navarre was performed to describe temporal trends of cancer incidence rates during the period 1973–2008 [7]. In that work, the area was considered as

*Correspondence: lola@unavarra.es

¹Department of Statistics and O.R., Public University of Navarre, Campus de Arrosadía, 31006 Pamplona, Spain

Full list of author information is available at the end of the article

an explanatory variable dividing the observed cases into urban and non-urban areas. However, the geographical distribution of the disease within Navarre was not analyzed. A study of spatial mortality patterns for several cancer locations (stomach, colorectal, lung, breast, prostate and urinary bladder cancer) was also recently performed on 8,073 Spanish municipalities during the period 1989–2008 [8], but brain cancer was not studied. In this paper our interest lies in analyzing the temporal evolution of the geographical distribution of brain cancer incidence in the municipalities of Navarre and Basque Country. We are mainly interested in locating high risk municipalities within both Autonomous Regions. Health areas constituted by several municipalities were also considered as a new level of spatial aggregation to gain power in our analysis. According to the literature, just a small percentage of brain cancer cases can be explained by the only clearly established risk factors: genetic and environmental factors [9, 10], and ionizing radiations [11, 12]. This lack of clearly established factors is the reason why the analysis performed here becomes so crucial.

Methods

Ethics

This research has been performed with the approval of the ethics committee of the Public University of Navarre (code PI-004/14).

Data source

The study is based on brain cancer incidence cases (International Classification of Diseases-10, code C71) recorded throughout the period 1986–2008 in Navarre and Basque Country population based cancer registries. The municipalities considered were those existing at the beginning of the period (year 1986). Later, there were some changes (some new municipalities arose) but then, the population of the new areas were aggregated to the municipality they belonged to in 1986, resulting in a total of 501 municipalities. The quinquennial population was provided by both the Statistical Institute of Navarre (IEN) and the Basque Country Statistical Institute (EUSTAT). Population for non census years was computed using linear interpolation. A total of 5,223 cases were recorded throughout the period 1986–2008 (1,214 in Navarre and 4,009 in the Basque Country), of which 2,891 were diagnosed in males and 2,332 in females. The expected cases per year and municipality ranges from 0 to 35.7, whereas the number of observed cases varies from 0 to 44. The overall incidence rate is about 9.6 per 100,000 inhabitants in Navarre and 8.3 cases per 100,000 inhabitants in the Basque Country. Population sizes of the small areas (municipalities) considered in our study are highly unbalanced, where average population during the period 1986–2008 vary from 21 to 360,623. Mean values of the most

populated municipalities of each health area are shown in Table 1.

Statistical analysis

The statistical model used to smooth (relative) incidence risks is a mixed Poisson model including spatial and temporal correlation. It is explained in some detail in what follows. As mentioned above, Navarre and Basque Country (two Autonomous Regions in Spain) are divided into $n = 501$ small areas (municipalities) labelled as $i = 1, \dots, n$ and data are available for time periods $t = 1, \dots, T$. Let E_{it} represent the number of expected cases in region i and year t computed using age and sex-standardization with the population of the study as reference. The indirect standardization method allowed to compare each municipality in a certain year with the overall area throughout the entire study period. Then, conditional on the relative risks r_{it} , the number of cancer incidence counts O_{it} is assumed to be Poisson distributed with mean $\mu_{it} = E_{it}r_{it}$. That is,

$$O_{it}|r_{it} \sim \text{Poisson}(\mu_{it} = E_{it}r_{it})$$

$$\log \mu_{it} = \log E_{it} + \log r_{it}$$

Several models have been considered to smooth the log-risks. The most common models in spatio-temporal disease mapping are possibly the non-parametric conditional autoregressive (CAR) models described in [13], where different types of space-time interactions between the main spatial and temporal random effects are proposed. Here, we considered a two-level spatial structure where municipalities were aggregated into larger health areas (see Fig. 1). The model can be seen as an extension of the

Table 1 Mean values of the most populated municipalities of each health area in the period 1986–2008

Health area	Municipality	Population
Bilbao	Bilbao	360,623
Araba	Vitoria	214,687
Pamplona	Pamplona	181,683
Gipuzkoa	San Sebastián	179,814
Ezkerraldea-Enkarterri	Barakaldo	103,645
Uribe	Getxo	80,924
Bidasoa	Irún	56,044
Interior	Basauri	47,416
Bajo Deba	Eibar	30,183
Tudela	Tudela	28,465
Alto Deba	Mondragón	24,108
Goierri-Alto Urola	Azpeitia	13,581
Estella	Estella	12,958

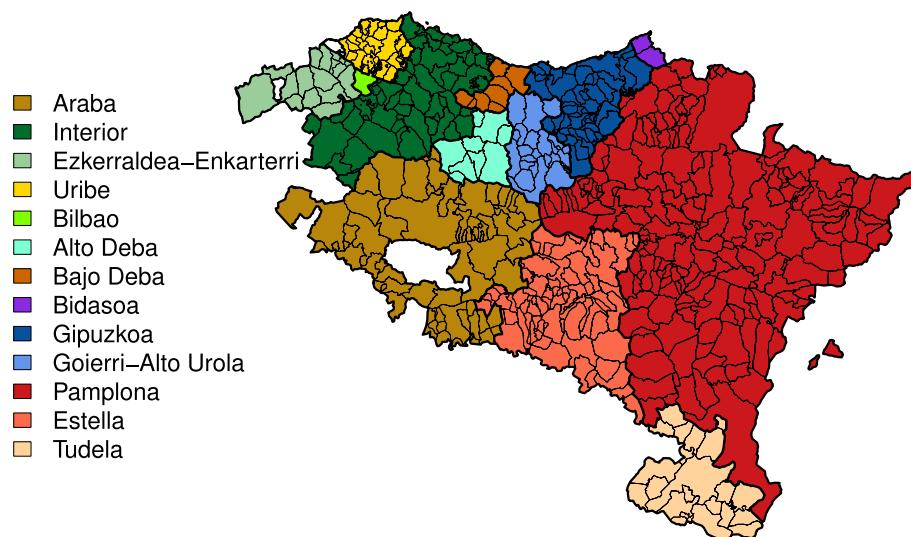


Fig. 1 Map of the $n = 501$ municipalities of Navarre and Basque Country aggregated by health areas

models proposed by Schrödle et al. [14]. Specifically, the log-risks are modeled as

$$\log r_{it} = \alpha + \xi_i + \psi_{j(i)} + \gamma_t + \delta_{j(i)t} \quad (1)$$

where $j(i)$ denotes the health area ($j = 1, \dots, 13$) municipality i belongs to, α quantifies the logarithm of the global risk, ξ_i and $\psi_{j(i)}$ represent the two-level spatial effects (municipality and health area effects respectively), γ_t ($t = 1, \dots, 23$) denotes temporal effects, and $\delta_{j(i)t}$ are space-time interaction effects.

The municipality-level random effects ξ_i were modeled initially using the CAR model modification proposed by Leroux et al. [15]. However, all the spatial variability was structured and then, an intrinsic CAR model was finally fitted. An exchangeable distribution was considered for the health area random effect, $\psi \sim N(0, \sigma_\psi^2 I_m)$. The temporal effect γ_t was modeled using a second order random walk to borrow strength from second-order temporal neighbors. The interaction term $\delta_{j(i)t}$ designates specific and independent temporal trends for each health area (Type II interaction in [13]). The model was fitted from an empirical Bayes approach using the well known penalized quasi-likelihood (PQL) technique [16–18]. To avoid identifiability problems all the random effects of Eq. (1) were reparameterized using appropriate transformation matrices based on the eigenvector decomposition of the variance-covariance matrices of these random effects. Finally, spatial, temporal and spatio-temporal patterns defined by the estimated log-risks were analyzed separately. The corresponding variances were computed using the delta method. Upper one-sided confidence intervals were constructed for the spatial effects and the true risk values to find high risk municipalities. When the lower

limit was greater than one, the region was classified as a high risk region. All the analysis were carried out using R 3.1.2 software [19].

Results and conclusions

The spatial pattern explains most of the total variability of the relative risks (about 85 %), while the rest of variability is explained by the temporal (9 %) and spatio-temporal (6 %) patterns. Figure 2 on the upper-left shows the spatial incidence risk pattern associated to each municipality and constant along the whole period, while high risk municipalities are displayed on the upper-right hand in Fig. 2. The areas with the highest spatial risks are located mainly in a region surrounding the capital of Navarre, Pamplona, but there are also a few municipalities with significant high risks in the northern part of the region, specifically in the border between Navarre and the Basque Country (Gipuzkoa). Conversely, the areas with the lowest spatial risks belong to the health area of Tudela (South of Navarre) and Ezkerraldea-Enkarterri (West of the Basque Country). The temporal risk pattern common to all regions is displayed at the bottom of Fig. 2. An increasing risk is observed from 1986 till approximately 1994, where the risk remains stable until 2002. From there on an upward trend is observed. This global increase in brain cancer incidence risk is also seen in Fig. 3, where the temporal evolution of the geographical incidence pattern is represented for some years of the period 1986–2008.

Finally, temporal evolutions of relative incidence risks are plotted in Fig. 4 for the most populated municipalities of each health area. In general, differences are observed among specific risk evolutions. For instance, the areas of Bilbao, Mondragón and San Sebastián show a decrease

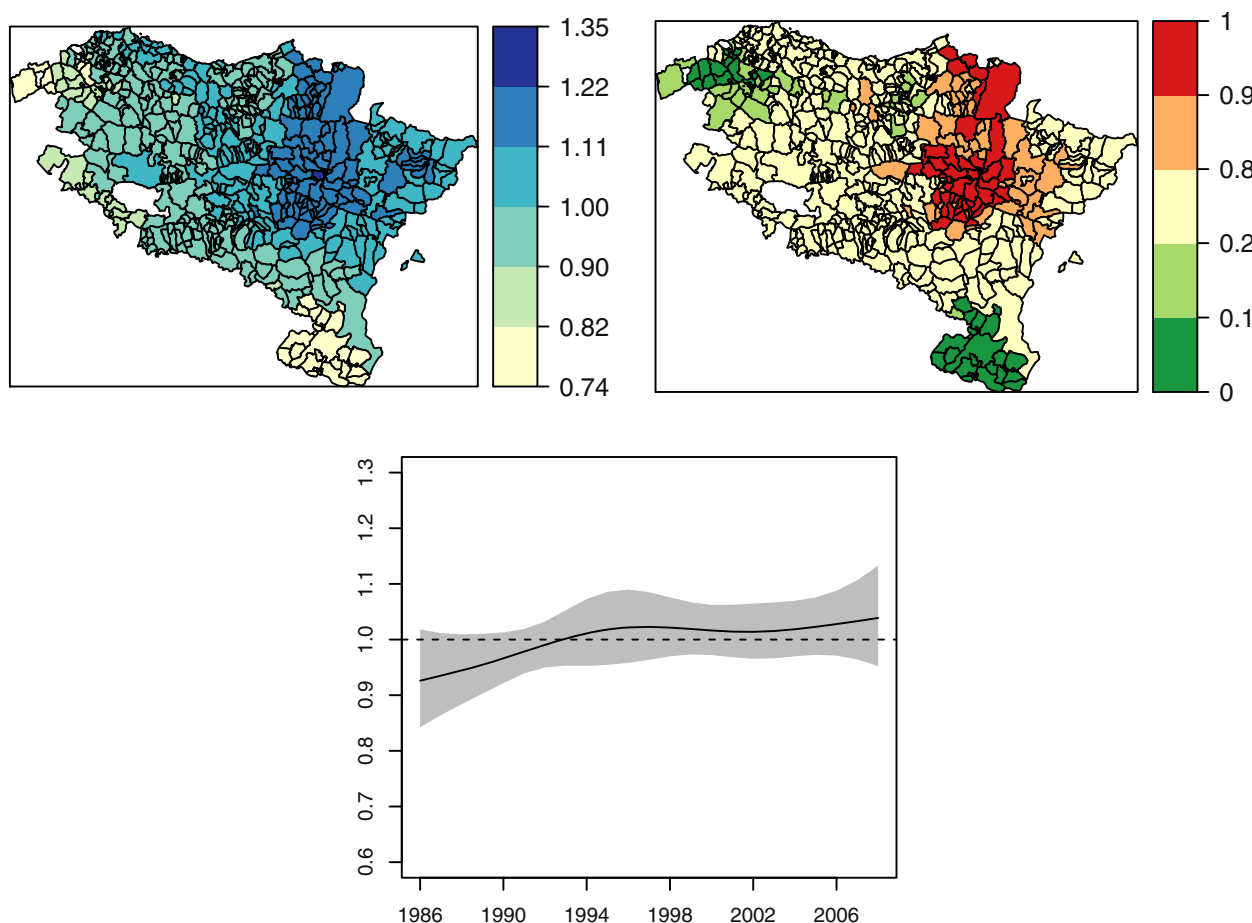


Fig. 2 Geographical pattern of brain cancer incidence (*upper left figure*), significant high risk municipalities (*upper right*) and global temporal trend (*bottom*)

in their relative incidence risks during the second half of the period 1986–2008, while other municipalities like Azpeitia, Eibar, Irún and Pamplona in particular show an increase during the last years. These deviations from the global trend (see Fig. 2) are possible due to the flexibility of the selected model.

Discussion

The model used in the data analysis is very rich, allowing to evaluate the evolution of the geographical pattern of brain cancer incidence in Navarre and the Basque Country. It has the potential to obtain altogether in one the geographical pattern for the whole period, the global temporal trend, and the temporal evolution of the geographical pattern. Previous models analyzing brain cancer incidence data in Navarre and the Basque Country only provided geographical [6] or temporal patterns [7]. Due to the large number of areas involved in our analysis and the evident differences in the risk evolution in each of them, the use of spatio-temporal models including space-time

interactions becomes essential. Our analysis reveals that the number of high risk municipalities is increasing with time, and that the risk evolution for particular municipalities differs from the global temporal pattern. The model used is a non-parametric CAR model where different precision matrices can be used to model the spatio-temporal interaction term [13]. In our case, after considering alternative models to smooth the log-risks, a two-level (municipalities within health areas) spatial structure model was selected. The model also includes a random walk of order two for the temporal effects that borrows strength from second order time neighbors, and a temporally structured health area level interaction effect. Model fitting was carried out from a frequentist perspective and it was carefully programmed to take into account identifiability issues. Variability measures were also derived as they are not directly obtained from the fitting.

The brain cancer incidence data used in our analysis have been obtained from two internationally standardized population based cancer registries subject to quality

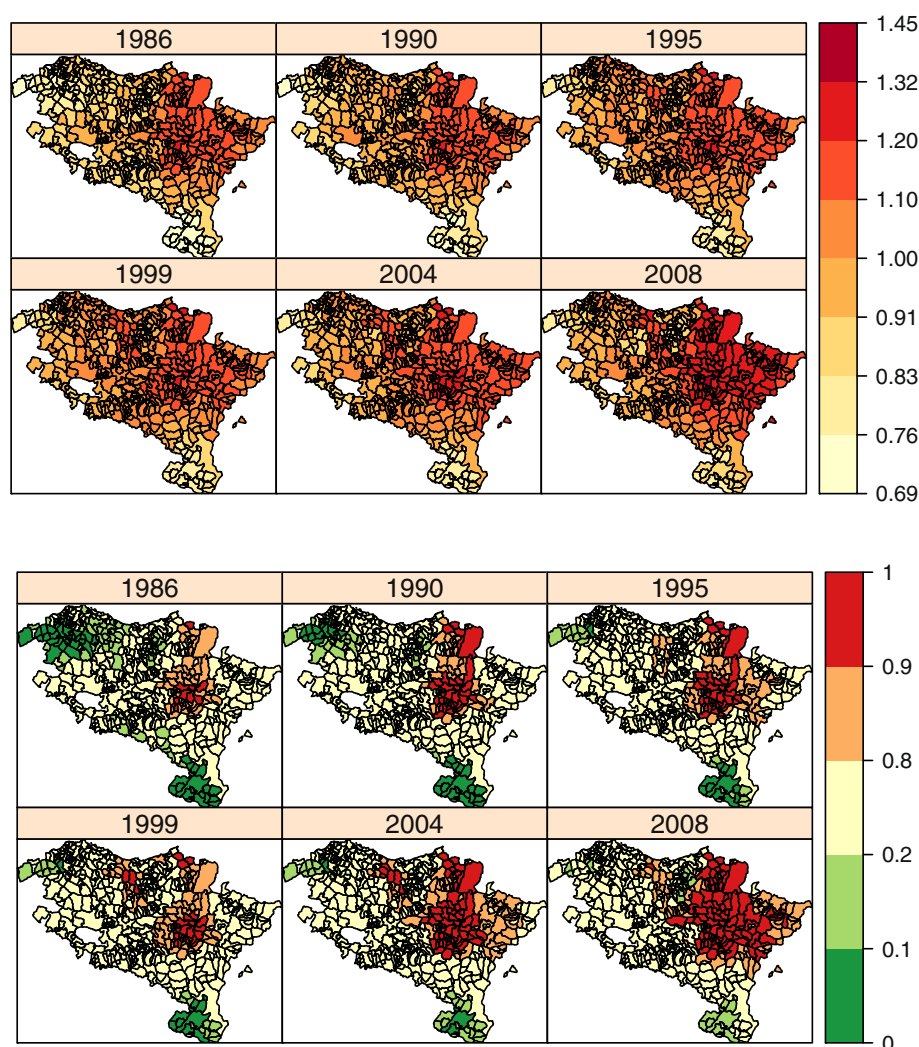
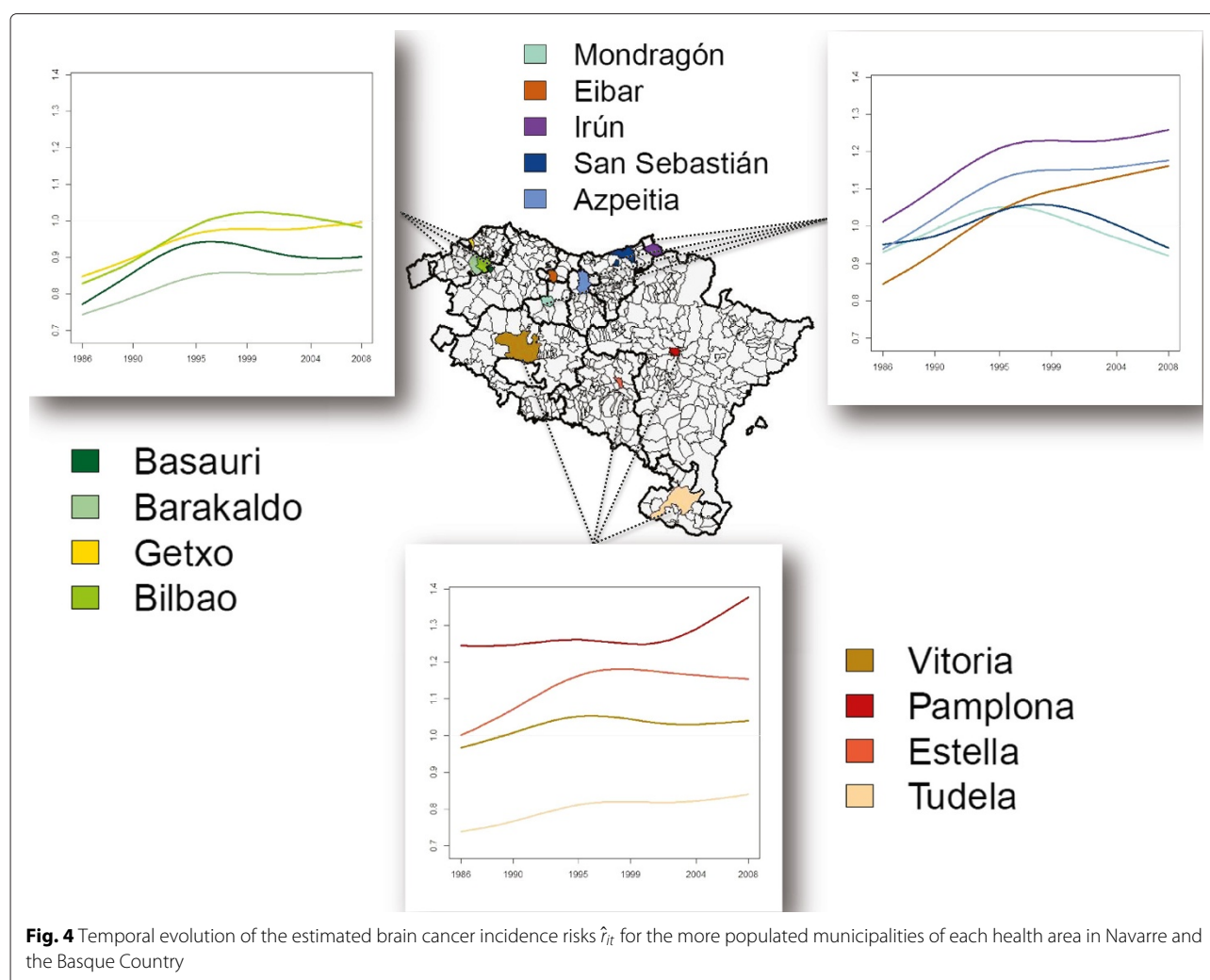


Fig. 3 Temporal evolution of the geographical pattern of brain cancer incidence estimated risks (*up*) and corresponding maps of significantly high risk municipalities (*down*) of Navarre and Basque Country

controls. Nowadays population based cancer registries include benign brain tumors for a better understanding of brain cancer epidemiology. However, we have not included them in this study because we did not have this information available for the whole period 1986–2008. The last figures for different cancer registries published by the International Agency for Research on Cancer (IARC) [5] for the period 2003–2007, showed that CNS tumors including brain cancer (ICD-10 codes C70-72) incidence rates adjusted to world population were 7.8 and 7.2 for males, and 5.7 and 5.2 for females in Navarre and Basque Country respectively. Although these rates are high, there are other European regions with higher rates in both genders like Croatia, Norway, Serbia, Sweden and some regions of Italy and Poland. In Spain, rates ranged from 4.8 in Cuenca to 7.8 in Navarre for males, while for

females the range varied between 3.0 in La Rioja and 5.7 in Navarre. In our analysis, significantly high risk areas were found in Pamplona and surrounding areas and also in municipalities close to the border between Navarre and Gipuzkoa. Similar results were observed in López-Abente et al. [6], where only geographical patterns of brain cancer incidence data were analyzed during the period 1978–1992. These results are also similar to previously published works on brain cancer incidence [1, 7] and mortality [2]. The findings in Etxeberria et al. [7] showed a higher brain cancer incidence rates in urban (Pamplona) rather than in rural areas. Although many agricultural chemicals and pesticides used in rural areas were believed to be brain cancer risk factors [6], the last data stand out that their effects in Navarre were small since the rates in rural areas were lower than in urban regions. Our analysis



showed an increase of the risk along the study period. Part of this increase could be explained by the improvement of diagnostic techniques allowing for a more specific diagnosis of this tumor.

The geographical differences worldwide have been attributed, at least in part, to the accessibility to health services in general and to the use of new technologies in particular. This makes it possible to have better information on the morphology of tumors, particularly in older age groups, but it may also contribute to the diagnosis of incidental neoplasms [20]. The small number of cases, the long latency period, and the variations in study designs and available information, make it difficult to draw conclusions on specific brain tumors and individual risk factors. Brain tumors are rare tumors and their only clearly established risk factors are hereditary syndromes, ionizing radiation and age [21]. A great number of environmental expositions have been studied in adults aiming at explaining the exposition frequency but results were inconsistent. For example some studies have revealed the association

between parental and subject occupation and brain cancer [22–24] but other studies have found no association [25, 26]. In 2011, the International Agency for Research on Cancer (IARC) of the World Health Organization (WHO) classified radio frequency (RF) as “possible carcinogenic to humans - 2B” [27] but no definite conclusions have been shown yet. Finally, Provost et al. [28] found that agricultural workers with the highest level of exposure to pesticides were twice as likely to be diagnosed with brain cancer as those with no exposure. However, pesticides are used in vineyards, and the areas of wine production in our study (the Ribera district of Navarre and La Rioja in the Basque Country) did show a low brain cancer incidence risk. The high risk municipalities that we found in this study are not related to any particular type of farmer-land or industrial setting. The results of the analysis performed in this paper are not conclusive as they are of descriptive nature. However, the study points out the relevance of using population based cancer registries to identify high risk areas related to environmental exposures. These

registries are extremely valuable tools for providing useful and reliable information on brain cancer and other central nervous system tumors incidence [29]. Our study highlights the need of continuous surveillance of this cancer in the areas of high risk. However, due to the low percentage of cases explained by the known risk factors, primary prevention should be applied as a general recommendation in these populations.

Competing interests

The authors declare that they have no competing interests.

Authors' contributions

MDU, AA and TG have developed the spatio-temporal statistical model and performed the model programming and fitting. They have also contributed to the writing of all the sections in this paper. Casado has made of all the linear interpolations to compute populations. IC, EA and NL have contributed to the design of the study, to interpret results and to the discussion and conclusions. All authors read and approved the final manuscript.

Authors' information

Not applicable.

Acknowledgements

This research has been supported by the Spanish Ministry of Science and Innovation (project MTM 2011-22664, jointly sponsored with FEDER grants and project MTM2014-51992-R), and by the Health Department of the Navarre Government (project 113, Res.2186/2014). The authors are also grateful to both the Basque Cancer Registry (M. Errázola and M. De la Cruz) and the Navarre Cancer Registry (E. San Román and R. Burgui).

Author details

¹Department of Statistics and O.R., Public University of Navarre, Campus de Arrosadía, 31006 Pamplona, Spain. ²Institute for Advanced Materials (INAMAT), Public University of Navarre, Campus de Arrosadía, 31006 Pamplona, Spain. ³Research Network on Health Services in Chronic Diseases (REDISSEC), Madrid, Spain. ⁴Navarre Public Health Institute, Calle Leyre 15, 31006 Pamplona, Spain. ⁵CIBER of Epidemiology and Public Health CIBERESP, Madrid, Spain. ⁶Public Health Division of Gipuzkoa, BIODonostia Research Institute, Government of the Basque Country, Nafarroa hiribidea 4, 20013 Donostia-San Sebastián, Spain.

Received: 20 July 2015 Accepted: 23 September 2015

Published online: 05 October 2015

References

- Ruiz-Tovar M, López-Abente G, Pollán M, Aragonés N, Ardanaz E, Moreo P, et al. Brain cancer incidence in the provinces of Zaragoza and Navarre (Spain): effect of age, period and birth cohort. *J Neurol Sci.* 1999;164:93–9.
- López-Abente G, Ramis R, Pollán M, Aragonés N, Pérez-Gómez B, Gómez-Barroso D, et al. Atlas municipal de mortalidad por cáncer en España, 1989–1998. Madrid: Instituto de Salud Carlos III 2006.
- Ugarte MD, Goicoa T, Militino AF. Spatio-temporal modeling of mortality risks using penalized splines. *Environmetrics.* 2010;21:270–89.
- Ferlay J, Soerjomataram I, Ervik M, Dikshit R, Eser S, Mathers C, et al. GLOBOCAN 2012 v1.0. Cancer Incidence and Mortality Worldwide: IARC CancerBase No. 11 [Internet]. Lyon, France: International Agency for Research on Cancer 2013. Available from: <http://globocan.iarc.fr>, accessed on 04/03/2015.
- Forman D, Bray F, Brewster DH, Gombe Mbalawa C, Kohler B, Piñeros M, et al. Cancer Incidence in Five Continents, Vol. X (electronic version) 2013. Lyon: IARC. <http://ci5.iarc.fr> last accessed on 04/03/2015.
- López-Abente G, Pollán M, Ardanaz E, Errezola M. Geographical pattern of brain cancer incidence in the Navarre and Basque Country regions of Spain. *Occup Environ Med.* 2003;60:504–8.
- Etxeberria J, San Román E, Burgui R, Guevara M, Moreno-Iribas C, Urbina MJ, et al. Brain and Central Nervous System Cancer Incidence in Navarre (Spain), 1973–2008, and Projection for 2014. *J Cancer.* 2015;6:177–83.
- López-Abente G, Aragonés N, Pérez-Gómez B, Pollán M, García-Pérez J, Ramis R, et al. Time trends in municipal distribution patterns of cancer mortality in Spain. *BMC Cancer.* 2014;14:535.
- Inskip PD, Linet MS, Heineman EF. Etiology of Brain Tumors in Adults. *Epidemiol Rev.* 1995;17:382–414.
- Wrensch MR, Minn Y, Chew T, Bondy M, Berger MS. Epidemiology of primary brain tumors: current concepts and review of the literature. *Neuro-Oncol.* 2002;4:278–99.
- Preston-Martin S. Epidemiology of primary CNS neoplasms. *Neurol Clin.* 1996;14:273–90.
- Ostrom QT, Barnholtz-Sloan JS. Current state of our knowledge on brain tumor epidemiology. *Curr Neurol Neurosci.* 2011;11:329–35.
- Knorr-Held L. Bayesian modelling of inseparable space-time variation in disease risk. *Stat Med.* 2000;19:2555–67.
- Schrödle B, Held L, Riebler A, Danuser J. Using integrated nested Laplace approximations for the evaluation of veterinary surveillance data from Switzerland: a case-study. *J Roy Stat Soc C.* 2011;60:261–79.
- Leroux B, Lei X, Breslow N. Estimation of disease rates in small areas: A new mixed model for spatial dependence. In: Halloran M, Berry D, editors. *Statistical Models in Epidemiology, the Environment and Clinical Trials*. New York: Springer-Verlag; 1999. p. 179–192.
- Breslow NE, Clayton DG. Approximate inference in generalized linear mixed models. *J Am Stat Assoc.* 1993;88:9–25.
- Dean CB, Ugarte MD, Militino AF. Penalized Quasi-Likelihood with Spatially Correlated Data. *Comput Stat Data An.* 2004;45:235–48.
- Ugarte MD, Adin A, Goicoa T, Militino AF. On fitting spatio-temporal disease mapping models using approximate Bayesian inference. *Stat Methods Med Res.* 2014;23:507–30.
- R Core Team R. A language and environment for statistical computing. R Foundation for Statistical Computing 2014. Vienna, Austria. <http://www.R-project.org/>. Access 01/05/2015.
- Morris Z, Whiteley WN, Longstreth Jr. WT, Weber F, Lee Y-C, Tsushima Y, et al. Incidental findings on brain magnetic resonance imaging: systematic review and meta-analysis. *BMJ.* 2009;339:b3016.
- Bondy ML, Scheurer ME, Malmer B, Barnholtz-Sloan JS, Davis FG, Il'yasova D, et al. Brain Tumor Epidemiology: Consensus From the Brain Tumor Epidemiology Consortium. *Cancer.* 2008;113:1953–68.
- Greenop KR, Peters S, Fritschi L, Glass DC, Ashton LJ, Bailey HD, et al. Exposure to household painting and floor treatments, and parental occupational paint exposure and risk of childhood brain tumors: results from an Australian case-control study. *Cancer Cause Control.* 2014;25:283–91.
- Oddone E, Scaburri A, Bai E, Modonesi C, Stracci F, Marchionna G, et al. Occupational brain cancer risks in Umbria (Italy), with a particular focus on steel foundry workers. *G Ital di Med Lav.* 2013;36:111–7.
- Peters S, Glass DC, Greenop KR, Armstrong BK, Kirby M, Milne E, et al. Childhood brain tumours: associations with parental occupational exposure to solvents. *Brit J Cancer.* 2014;111:998–1003.
- Mazumdar M, Liu C-Y, Wang S-F, Pan PC, Wu MT, Christiani DC, et al. No association between parental or subject occupation and brain tumor risk. *Cancer Epidemiol Biomarkers Prevent.* 2008;17:1835–7.
- Alexander BH, Mandel JH, Scott LL, Ramachandran G, Chen YC. Brain cancer in workers employed at a specialty chemical research facility. *Arch Environ Occup H.* 2013;68:218–27.
- IARC. IARC monograph on the evaluation of carcinogenic risks to humans in Non-Ionizing radiation, radiofrequency electromagnetic fields, vol 102 Lyon: International Agency for Research on Cancer; 2013.
- Provost D, Cantagrel A, Lebaillay P, Jaffré A, Loyant V, Loiseau H, et al. Brain tumours and exposure to pesticides: a case-control study in southwestern France. *Occup Environ Med.* 2007;64:509–14.
- Fuentes-Raspall R, Vilardell L, Pérez-Bueno F, Joly C, García-Gil M, García-Velasco A, et al. Population-based incidence and survival of central nervous system (CNS) malignancies in Girona (Spain) 1994–2005. *J Neuro-Oncol.* 2011;101:117–23.