

RESEARCH ARTICLE

Open Access

The role of early life factors in the development of ethnic differences in growth and overweight in preschool children: a prospective birth cohort

Lenie van Rossem^{1,2,3*}, Esther Hafkamp-de Groen^{1,2}, Vincent WV Jaddoe^{1,4,5}, Albert Hofman⁵, Johan P Mackenbach² and Hein Raat²

Abstract

Background: Ethnic differences in childhood and adulthood are known, but ethnic differences in preschool overweight and associated factors are less studied. We assessed ethnic differences in pre-school age overweight, and studied the mediating role of early life factors in this association. Furthermore, we assessed body mass index (BMI) z-score development from birth to age 4 years to study ethnic-specific differences in BMI z-score trajectory.

Methods: We used data on 4581 children participating in a birth cohort who were born between 2002 and 2006 in Rotterdam, the Netherlands. Child's ethnicity was defined according to country of birth of the parents. Weight and length/height was repeatedly measured between 1 and 45 months of age. Overweight at age 4 years was defined according to cut-off points for BMI from the international obesity task force. We performed logistic regression to obtain independent estimates of the association between ethnicity and preschool-age overweight, and to assess the mediating role of early life risk factors. Mixed models were used to describe BMI-z development for each ethnic group from birth to preschool age.

Results: Relative to native Dutch children, non-Dutch children were more likely to be overweight at age 4 years, except for Surinamese-Hindustani children. Socio-demographic factors, parental BMI, and infant weight change in the first 6 months after birth reduced associations. After full adjustment, Turkish (OR: 2.02, 95% CI: 1.34-3.04) and Antillean/Surinamese Creole (OR: 1.78, 95% CI: 1.06-3.02) children were still more likely to be overweight at age 4 years.

Conclusion: Ethnic differences on the prevalence of overweight in preschool children can be partially explained by maternal educational level, parental overweight and early infant weight change. These may be possible targets to reduce ethnic inequalities in preschool age overweight.

Keywords: Ethnicity, Preschool, Overweight, Epidemiology, Infant weight gain, Socio-economic status, Breastfeeding, BMI

Background

Throughout the developed world, childhood overweight is increased in ethnic minority groups. In the USA, childhood overweight prevalence is higher among Blacks and Hispanics than among Caucasians [1]; and in the UK, overweight prevalence is higher among South-Asian

and African-Caribbean children, although inconsistencies arise when different definitions of overweight are used [2]. Studies from Australia, Germany and the Netherlands also report that certain ethnic groups have a higher prevalence of childhood overweight [3-5]. It is important to elucidate these ethnic differences in childhood overweight in order to take measures to prevent overweight in these groups. Ethnic differences in overweight have been reported to be present from preschool age onwards [3,5,6]. This suggests that factors responsible for ethnic differences in overweight act in early life. Indeed, one study reported ethnic differences in several risk factors (including infant

* Correspondence: lvanrossem@umcutrecht.nl

¹The Generation R Study Group, Erasmus MC-University Medical Centre Rotterdam, Dr. Molewaterplein 50, Rotterdam 3015 GE, the Netherlands

²Department of Public Health, Erasmus MC-University Medical Centre Rotterdam, Dr. Molewaterplein 50, Rotterdam 3015 GE, the Netherlands
Full list of author information is available at the end of the article

feeding, sugar-sweetened beverages, and mother's feeding practices) in preschool children, but this study did not assess the contribution of these risk factors to ethnic inequalities in overweight [7].

We assessed ethnic differences in pre-school age overweight, and studied the mediating role of risk factors that were present before overweight was developed ('early life factors') in this association. We distinguished these early life factors into parental, prenatal, and postnatal factors in order to get clues which of these factors can be targets for preventive interventions. Furthermore, we assessed body mass index (BMI) z-score development from birth to age 4 years to study ethnic-specific differences in BMI z-score trajectory.

Methods

Study design

This study was embedded in Generation R, a population-based multi-ethnic prospective cohort study from fetal life onwards. Invitations to participate in the study were made to all pregnant mothers who had an expected delivery date between 2002 and 2006 and who lived in the study area (Rotterdam, the Netherlands). Details of the study are described elsewhere [8].

The study was conducted in accordance with the guidelines proposed in the World Medical Association Declaration of Helsinki, and was approved by the Medical Ethical Committee at Erasmus MC, University Medical Centre Rotterdam. Written consent was obtained from all participants.

Study population

Consent for postnatal follow-up was available for 7893 children. We excluded twins from the analyses ($n = 197$). To avoid clustering, our analyses excluded data on the second or third pregnancy of any woman who was participating in the Generation R study with more than one child ($n = 580$). We excluded participants of whom we missed ethnicity ($n = 657$). Children who had less than 4 measures on height or weight were excluded ($n = 734$), as they were often lacking data on later overweight. In total, data of 5725 subjects were available for analyses. Children with a European ($n = 466$), Indonesian ($n = 76$), Asian western ($n = 5$), Asian non-Western ($n = 161$), American Western ($n = 30$), American non-Western ($n = 84$), Oceania ($n = 10$), African ($n = 118$) and Surinamese-other ($n = 194$) ethnicity were excluded from the analyses because of their small sample size and heterogeneity ($n = 1144$). After exclusion of these, the study sample consisted of 4581 children.

Measurements

Child's ethnicity

We used the standard definition of Statistics Netherlands as a basis for defining ethnic background. This definition is

based on country of birth of the parents [9], which we extended to country of birth of parents and grandparents. A child was considered as having an immigrant background if one of both parents was born abroad. If both parents were born abroad, but in different countries, mother's country of birth was leading. We also take third generation immigrants into account: if both parents were born in the Netherlands, but at least two grandparents of the same parent were born abroad, the child was assigned ethnicity of these grandparents. Also, children with one parent born abroad, but four grandparents born in the Netherlands, were assigned a Dutch ethnicity. All possible combinations and their consequences for assignment of child's ethnicity are described in Additional file 1.

We initially distinguished six ethnic groups according to country of birth. Surinamese children were further subdivided according to self-assigned ethnicity of the mother because different ethnicities live in that country. We performed analyses on 3126 native Dutch, 474 Turkish, 351 Moroccan, 199 Cape Verdean, 295 Antillean/Surinamese-Creole, and 136 Surinamese-Hindustani children ($n = 4581$).

BMI and overweight

Length (to 24 months)/height (from 24 months) and weight were measured according to a standard schedule and procedures by a well-trained staff at each visit to the child health centre. Length was measured in supine position to the nearest millimetre until the age of 24 months using a neonatometer, after which height was measured in standing position by a Harpenden stadiometer (Holtain Limited, Dyfed, U.K.). Weight was measured using a mechanical personal scale to the nearest 0.01 kg (SECA, Hamburg, Germany). A child usually visits the child health center that is assigned according to postal code. Routine visits at the child health centers are scheduled around 1, 2, 3, 4, 6, 11, 14, 18, 24, 30, 36, and 45 months of age. BMI was calculated as $\text{weight}/\text{height}^2$. BMI-for-age z-scores were derived from national growth curves [10]. We used the age and gender specific cut-off points of the International Obesity Task Force to define overweight [11].

Covariates

Socio-demographic variables All socio-demographic variables were assessed by questionnaire at study enrollment. Household income was dichotomized ($< \text{€ } 1600$ per month, $\geq \text{€ } 1600$ per month). Households that earn below this cut-off point are considered as low-income groups [12]. Level of maternal education was established at enrollment [13]. The mothers were classified into three educational categories according to the highest level of education they had attained: low (no education; primary school; lower vocational training; intermediate general

school; or three years general secondary school); middle (>3 years general secondary school; intermediate vocational training; or first year of higher vocational training), and high (higher vocational training; or Bachelor's degree, higher academic education). The following question was asked to determine material hardship: 'Do you have any difficulty in paying food, rent, electricity bill and such like?' Answer categories included 'no' (no), 'some' (yes), and 'great' (yes) difficulties. Single motherhood (yes, no) was obtained by questionnaire.

Parental characteristics Mother's BMI was calculated from self-reported pre-pregnancy weight and measured height at enrollment. Father's BMI was calculated from measured weight and height at enrollment. Smoking during pregnancy (yes, no) was derived from the three prenatal questionnaires (1st, 2nd, and 3rd trimester).

Birth characteristics Birth weight (grams) and gestational age (weeks) were obtained from medical records.

Postnatal factors Information on breastfeeding was obtained by a combination of questionnaires administered at 2, 6 and 12 months after birth. Questions included items on the proportion of breastfeeding relative to infant formula, breastfeeding duration, and number of daily feedings. Breastfeeding was defined as having received any (including non-exclusive) breastfeeding for 6 months. Infant weight change was defined as the difference in BMI between birth and six months of age.

Statistical analyses

We assessed characteristics of participants for the total population and for each ethnicity separately. P-values for differences in risk factors for overweight between ethnic groups were calculated by means of the Chi-square test for categorical variables and ANOVA for continuous variables.

First, we performed logistic regression to obtain independent estimates of the association between ethnicity (reference: 'Dutch') and preschool overweight, and to assess the mediating role of early life risk factors. We built our models in the following steps. First, we assessed the association between ethnicity and childhood overweight, adjusted for age and sex (model 1). Then, we adjusted separately for the socio-demographic variables: household income, mother's educational level, and material hardship (model 2), other parental variables: parental BMI and maternal smoking during pregnancy (model 3), birth characteristics: birth weight and gestational age (model 4), and postnatal risk factors: breastfeeding and infant weight gain (model 5) to show the mediating role of each of these groups on the association between

ethnicity and overweight. Lastly, we adjusted for all variables simultaneously (model 6).

To prevent bias, loss of information and enhance comparison between models, we applied multiple imputation in SPSS v17.0 on the early life risk factors to this analysis [14,15]. The missing values for the covariates ranged from 0% (birth weight, gestational age) to 40% (infant weight gain). The number of missing values were higher for non-Dutch participants for the variables father's BMI, household income, material hardship and breastfeeding. We assumed the missings to be random (MAR). Five imputed datasets and their pooled estimates were generated using a fully conditional specified model to handle missing values. Imputations were based on the relations between all covariates in the study. We used the pooled estimates from these five imputed datasets to report odds ratios (OR) and their 95% confidence intervals (CI).

Second, repeated measurements analysis ('PROC MIXED' procedure in SAS) was performed to calculate whether BMI z-score curves differ per ethnicity throughout the first 4 years of life. This analysis takes into account that data are correlated within one individual. The best fitting model for BMI as a function of age was built using fractional polynomials. The best fitting model for BMI z-score was $BMIz = \beta_0 + \beta_1 * (\ln)age + \beta_2 * \sqrt{age}$. To this model we added ethnicity as a main determinant (reference: Dutch), and an interaction term of ethnicity with both transformations of age. We modeled the BMI z-score development of each ethnic group for the total population and stratified for overweight and normal weight children. The best model for the subsamples was: $BMIz = \beta_0 + \beta_1 * age + \beta_2 * \sqrt{age}$.

Analyses were conducted with the Statistical Package for Social Sciences (SPSS) version 17.0 for Windows (SPSS Inc, Chicago, IL, USA). Statistical Analysis Software (SAS), version 9.1.3 for Windows (SAS Institute, Cary, NC, US) was used for the repeated measurements analyses (mixed procedure).

Results

Sample characteristics

Ethnic differences were present in all covariates (Table 1). Generally, non-Dutch mothers were lower educated, had a lower household income, suffered more often from material hardship, and were more often single ($p < 0.001$) compared to native Dutch mothers. The direction of differences in father's BMI, smoking during pregnancy, breastfeeding, birth weight and gestational age varied according to ethnic subgroup (Table 1). Prevalence of overweight between 2 and 4 years was about 10%. Relative to Dutch children whose overweight prevalence varied between 10 and 12% between ages 2 to 4, overweight prevalence was consistently higher in Moroccan

Table 1 Subject characteristics for 4581 children of different ethnicities in the Generation R Study

		Total (n = 4581)	Dutch (n = 3126)	Turkish (n = 474)	Moroccan (n = 351)	Cape Verdean (n = 199)	Antillean/ Surinamese Creole (n = 295)	Surinamese- Hindustani (n = 136)	p-value ^a
Socio-demographic variables									
Mothers education	% low	9.0	2.6	32.8	24.2	21.8	12.5	14.1	<0.001
	% middle	43.3	34.7	53.7	62.1	66.3	70.6	71.9	
	% high	17.7	62.7	13.5	13.7	11.9	17.0	14.1	
Household income	% low	24.1	8.6	63.5	67.9	64.6	67.0	51.5	<0.001
Material hardship	% yes	18.1	9.2	46.0	36.8	41.1	45.3	32.0	<0.001
Single motherhood	% yes	11.2	5.3	6.7	8.9	48.2	53.2	23.0	<0.001
Other parental characteristics									
BMI mother	In kg/m ²	23.7 (4.3)	23.1 (3.8)	25.2 (5.1)	25.3 (4.6)	23.8 (3.9)	24.6 (5.2)	23.5 (4.7)	<0.001
BMI father	In kg/m ²	25.2 (3.5)	25.1 (3.3)	26.3 (4.0)	25.8 (3.8)	24.5 (3.1)	25.3 (3.9)	24.5 (3.6)	<0.001
Pregnancy smoking	% yes	11.0	10.4	16.0	8.0	11.2	12.2	10.3	0.01
Birth characteristics									
Birth weight	In grams	3449 (550)	3500 (553)	3393 (492)	3518 (471)	3271 (531)	3221 (558)	3041 (516)	<0.001
Gestational age	In weeks	40.0 (1.7)	40.0 (1.7)	39.9 (1.6)	40.3 (1.5)	39.9 (1.4)	39.6 (1.8)	39.4 (1.5)	<0.001
Risk factors in infancy									
Breastfeeding at 6 months	% yes	28.8	29.6	37.3	25.9	18.9	18.2	17.0	<0.001
Child overweight									
Age	Age 2	11.3	9.2	21.4	20.7	13.4	12.6	3.0	<0.001
	Age 2.5	11.4	8.4	26.3	17.3	20.8	10.2	0.0	<0.001
	Age 3	10.1	7.8	23.3	17.9	9.7	11.7	1.2	<0.001
	Age 3.5	10.4	7.6	28.1	14.0	12.5	10.0	4.5	<0.001
	Age 4	12.1	9.2	23.1	18.9	17.4	16.1	8.0	<0.001

Values are percentages or mean (SD).

^aP-values are for Chi² test for categorical variables, and ANOVA for continuous variables.

Missing values were 103 (2.2%) for educational level, 940 (20.5%) for income, 988 (21.6%) for material hardship, 82 (1.8%) for single motherhood, 943 (20.6%) for BMI mother, 1229 (26.8%) for BMI father, 813 (17.7%) for smoking during pregnancy, 2 (0%) for birth weight, 719 (15.7%) for breastfeeding at 6 months.

(14-21%, $p < 0.001$) and Turkish (21-28%, $p < 0.001$) children, and lower in Surinamese-Hindustani children (0-8%, $p < 0.001$) (Table 1).

Contribution of risk factors in explaining ethnic overweight differences

Of the 4581 children in the study population, 2994 (65%) had measured weight and height at the last scheduled visit in the child health centers (around 45 months of age). Unadjusted analyses showed that all non-Dutch groups, except the Surinamese-Hindustani children, were more likely to be overweight at age 4 (Table 2, model 1). Adjustment for mother's educational level (model 2), parental BMI (model 3), and infant weight change (model 5) attenuated the associations, with the strongest attenuation after adjusting for mother's educational level. In contrast, perinatal factors strengthened associations (model 4). After full adjustment (model 6), only Turkish (OR: 2.02, 95% CI: 1.34-3.04) and Antillean/Surinamese-Creole (OR: 1.78,

95% CI: 1.06-3.02) ethnicity were independently associated with overweight at age 4. Associations between Moroccan and Cape Verdean ethnicity and preschool overweight at age 4 were not statistically significant after full adjustment for early life risk factors.

The analysis based on the imputed and not imputed data revealed the same early life overweight risk factors for model 1-5 (see Additional file 2). For the final model (model 6), the risk factors for overweight slightly differed. Both methods revealed paternal BMI, birth weight, and infant weight change as risk factors. In the imputed data, educational level, mother's BMI, gestational age, and breastfeeding were risk factors for childhood overweight. Although the effect estimates pointed in similar directions, these factors were not statistically significant.

The association between ethnicity and overweight followed a similar pattern for the not imputed data; after adjustment for the socio-demographic, parental, and postnatal factors the association between ethnicity

Table 2 Associations between ethnicity and overweight at 48 months, and contribution of early life factors in the Generation R Study (n = 2994)^a

	Model 1	Model 2	Model 3	Model 4	Model 5	Model 6
Child's ethnicity						
<i>Native Dutch</i>	1 (ref)	1 (ref)	1 (ref)	1 (ref)	1 (ref)	1 (ref)
<i>Turkish</i>	3.25 (2.39-4.41)	2.14 (1.47-3.11)	2.62 (1.90-3.63)	3.69 (2.69-5.06)	3.04 (2.23-4.15)	2.02 (1.34-3.04)
<i>Moroccan</i>	2.40 (1.66-3.47)	1.65 (1.08-2.52)	1.88 (1.28-2.78)	2.63 (1.81-3.83)	2.31 (1.59-3.36)	1.48 (0.92-2.38)
<i>Cape Verdean</i>	2.00 (1.22-3.27)	1.39 (0.81-2.38)	1.94 (1.15-3.25)	2.63 (1.59-4.37)	1.88 (1.14-3.11)	1.78 (0.99-3.20)
<i>Antillean/Surinamese-Creole</i>	1.82 (1.16-2.87)	1.46 (0.89-2.40)	1.63 (1.01-2.62)	2.25 (1.41-3.57)	1.85 (1.17-2.92)	1.78 (1.06-3.02)
<i>Surinamese-Hindu</i>	0.89 (0.41-1.96)	0.68 (0.30-1.54)	0.81 (0.36-1.83)	1.39 (0.62-3.09)	0.88 (0.49-1.94)	1.04 (0.44-2.47)
Household income						
<i>Low</i>		0.93 (0.62-1.38)				1.03 (0.70-1.53)
<i>Above average</i>		1 (ref)				1 (ref)
Mother's educational level						
<i>High</i>		0.51 (0.36-0.73)				0.61 (0.41-0.89)
<i>Middle</i>		0.35 (0.23-0.54)				0.48 (0.30-0.77)
<i>Low</i>		1 (ref)				1 (ref)
Material hardship						
<i>No</i>		1 (ref)				1 (ref)
<i>Yes</i>		1.19 (0.97-1.80)				1.13 (0.75-1.71)
Mother's BMI (per unit)			1.07 (1.04-1.10)			1.05 (1.02-1.08)
Father's BMI (per unit)			1.15 (1.09-1.20)			1.14 (1.08-1.21)
Smoking during pregnancy						
<i>No</i>			1 (ref)			1 (ref)
<i>Yes</i>			1.36 (0.85-2.18)			1.49 (0.96-2.31)
Birth weight (per 500 gram)				1.05 (1.04-1.07)		1.06 (1.04-1.07)
Gestational age (per week)				0.85 (0.78-0.93)		0.88 (0.80-0.96)
Breastfeeding at 6 months						
<i>No</i>					1 (ref)	1 (ref)
<i>Yes</i>					1.26 (0.98-1.62)	1.33 (1.02-1.75)
Difference in BMI between birth and 6 months (per unit)					1.29 (1.17-1.42)	1.41 (1.26-1.58)

^aValues are odds ratios (95% confidence intervals). Values in bold indicate statistical significance.

Model 1: adjusted for age and sex.

Model 2: adjusted for sex, age, and socio-demographics (household income, mother's education, material hardship).

Model 3: adjusted for sex, age, and parental (parental BMI, maternal smoking during pregnancy).

Model 4: adjusted for sex, age, and birth characteristics (birth weight and gestational age).

Model 5: adjusted for sex, age, and postnatal factors (breastfeeding, infant weight gain).

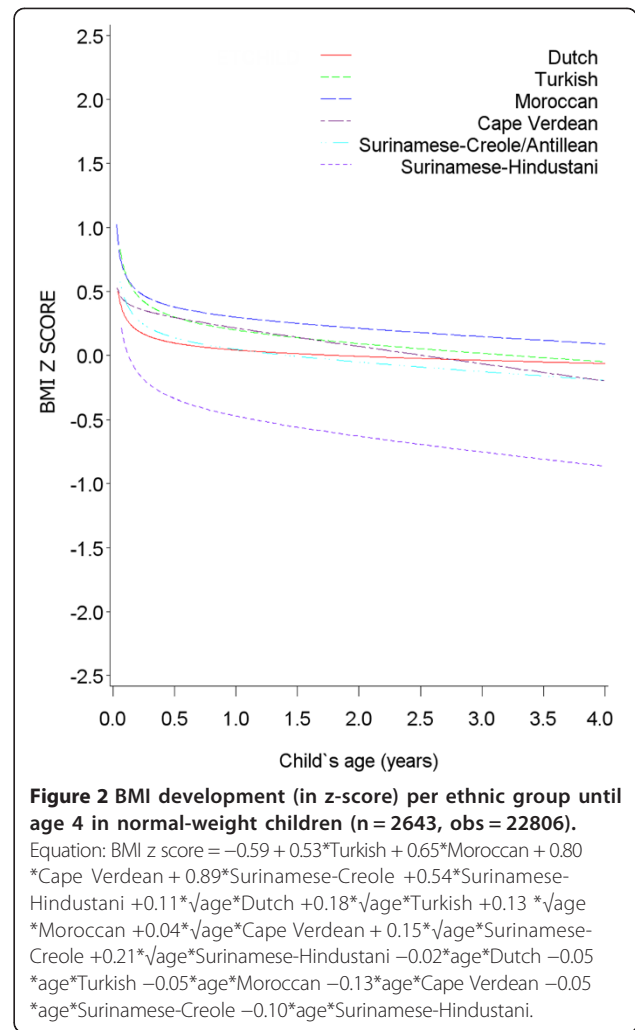
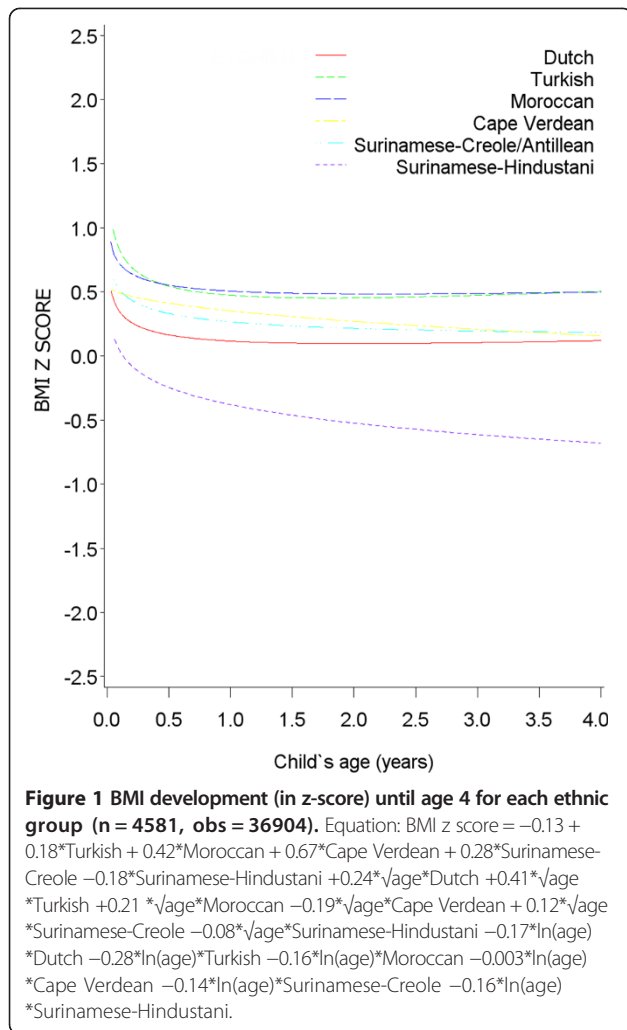
Model 6: adjusted for all variables in model 1–5 simultaneously.

and overweight was attenuated, while adjustment for the perinatal factors strengthened the association.

BMI development in ethnic groups

We assessed BMI development without any of the explanatory variables in the model to study specific time periods in which BMI differences between ethnic groups could occur. The BMI development model indicated differences in BMI development between ethnic subgroups (p-value for ethnicity: 0.007, p-value for ethnicity*ln(age): <0.0001, p-value for ethnicity*√age: <0.0001). All

non-Dutch ethnic groups except for Surinamese-Hindustani children, had a higher BMI z-score from 1 month of age onwards (Figure 1). Development of BMI z-score was similar for all ethnic groups, as indicated. This was also the case when restricting the sample to normal weight children (Figure 2), but BMI z-score was lower in Cape Verdean and Antillean/Surinamese-Creole children at the time preschool age was reached. Also, Antillean/Surinamese-Creole overweight children had a steeper increase in BMI z-score in early life than the other ethnic groups (Figure 3).



Discussion

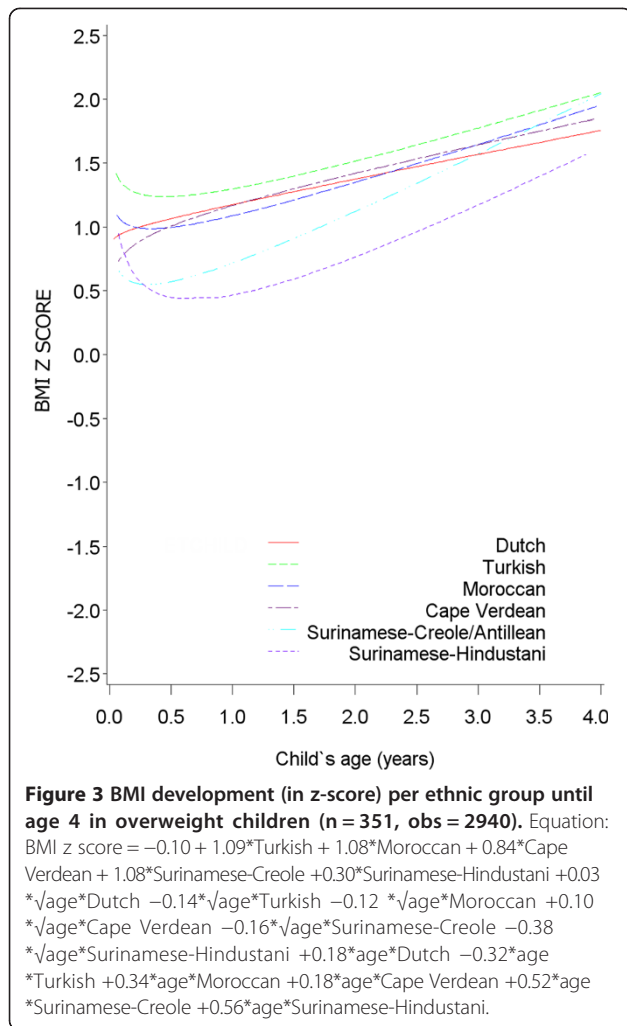
Main findings

This study shows that relative to native Dutch children, non-Dutch children are more likely to develop overweight at a very young age, with the exception of Surinamese-Hindustani children. BMI differences are already present in early postnatal life, and develop in a persistent way to preschool age. Mother's educational level, higher parental BMI, and a larger infant BMI change between birth and 6 months of age were important contributors in explaining the higher prevalence of overweight in non-Dutch children.

Interpretation

The results of our study are consistent with the findings of a study that reported a higher prevalence of overweight in Turkish and Moroccan children from the age of 3 years onwards [3,6]. Similar findings were also reported in Australia for Mediterranean white children from the age of 5 years onwards [5]. In contrast to the results of Whitaker

and Orzol, who concluded that the higher prevalence of overweight in Hispanic children could not be explained by maternal education, household income or food security, our study showed a large contribution of maternal educational level [16]. This may be due to the difference in country-specific ethnicities, and underlying history of migration. In our study, parental BMI and infant weight change also explained part of the association between ethnicity and childhood overweight. Another Dutch birth cohort study reported similar contributing factors [17]. Rapid infant weight gain is a well-established risk factor for later overweight [18]. Gain in infant BMI between birth and 6 months might be driven by infant feeding practices. Woo et al. reported that breastfeeding (comparing those receiving any breastfeeding for 4 months versus those receiving any breastfeeding for less than 4 months) mediates the association between ethnicity and overweight in adolescents [19]. Although breastfeeding was a strong determinant of overweight in our study, we did not see a mediating effect of breastfeeding on the association between ethnicity and



overweight until age 4 years. The protective effect of breastfeeding on overweight may express at a later age. Also, we did not study complementary feeding. It has been reported that some ethnic groups do not adhere to the feeding recommendations, which may result in overfeeding [20,21]. Cultural differences may play an important role in overfeeding, as a ‘chubby’ baby is often seen as the most healthy baby in some ethnic groups [22]. Thus, part of the association may be due to feeding practices other than breastfeeding that is reflected in faster infant weight gain. However, determinants of infant weight gain can also be genetic or based on developmental factors during pregnancy [23,24].

Study limitations and strengths

Strengths of this study were the longitudinal design with repeated measurements of BMI and the homogeneous ethnic groups. However, ethnicity is not a standardized, well-defined concept. It refers to people belonging to the same nation, religion, language, country of birth, or

culture [25]. We used country of birth because it is the most objective and stable measure that can be used in young children. Nevertheless, country of birth does not cover all aspects of ethnicity, such as culture and ethnic identity [26]. Also, we categorized the children of mixed ethnicity according to ethnic background of the mother’s family, which may have attenuated our results. Future studies could give the associations between several aspects of ethnicity and overweight.

We used BMI as an indicator of overweight and obesity. BMI is a measure of excess weight rather than of excess fat. Fat percentage may differ for BMI levels among ethnic subgroups: this is especially the case in Asians [2]. However, there are no specific cut-off points available for Asians to define overweight and obesity according to the BMI [27]. DXA measures for this cohort will become available in the future.

Lastly, the percentages of mothers from ethnic minorities are lower among the participants than expected from the population data in Rotterdam [28]. This could have led to selection bias if associations between ethnicity and overweight are different for those who participate compared to those who do not participate. Although this is unlikely and associations are probably unaffected, overweight prevalence may not be generalized to the ethnic minority population. Also, a substantial number of values in the covariates were missing, and non-Dutch participants had a higher number of missing values for some of the covariates; however, on the assumption that these are missing at random (i.e. missings may be correlated with variables in the model, but may not be correlated with variables not in the model) they are unlikely to have caused selection bias. We assume missing at random because associations between covariates and overweight were in expected directions, as reported in earlier studies. Also, associations between ethnicity and overweight were in similar direction as a previous Dutch study [17]. In addition, despite the loss of power in the not imputed data, the interpretation of the imputed and not imputed data was similar.

Conclusion

This study shows that ethnic inequalities in preschool-age overweight have their origins in factors that operate before (maternal educational level), during (parental BMI), and after (infant weight change) pregnancy. After birth, BMI development was fairly similar between ethnic groups. Maternal educational level, parental BMI, and infant weight change explained part of the ethnic differences in childhood overweight. Therefore, in order to reduce ethnic inequalities in childhood overweight, prevention programs should start in the earliest stage of pregnancy. Future research should clarify the underlying behavioral factors of ‘maternal education’, ‘parental BMI’, and ‘infant weight change’.

Additional files

Additional file 1: Definition of ethnicity.

Additional file 2: Main results (Table 2) for unimputed data (available case analysis).

Abbreviations

OR: Odds ratio; AOR: Adjusted odds ratio; CI: Confidence interval; BMI: Body mass index.

Competing interests

The authors have declared that no competing interests exist.

Authors' contributions

LvR conceptualized the study, analyzed the data, and drafted the manuscript. EH participated in the concept and design of the study, assisted in analyzing and drafting the manuscript, and helped with interpretation of the results. VWJ and AH were involved in data acquisition, participated in concept and design of the study, and critically revised the manuscript. JPM was involved in data acquisition, supervised the study, participated in concept and design of the study, and critically revised the manuscript for important intellectual content. HR had the idea for the study, supervised the study, participated in concept and design, interpreting the data and revised several drafts of the manuscript. All authors have read and approved the submission of this version of the manuscript.

Acknowledgments

The Generation R Study is conducted by the Erasmus MC – University Medical Centre Rotterdam in close collaboration with the Erasmus University Rotterdam, School of Law and Faculty of Social Sciences; the Municipal Health Service Rotterdam area, Rotterdam; the Rotterdam Homecare Foundation, Rotterdam; and the Stichting Trombosedienst & Artsenlaboratorium Rijnmond (STAR), Rotterdam. We gratefully acknowledge the contribution of the participating pregnant women and their partners, general practitioners, hospitals, midwives and pharmacies in Rotterdam.

The first phase of the Generation R Study is made possible by financial support from: Erasmus Medical Center, Rotterdam, Erasmus University Rotterdam and the Netherlands Organization for Health Research and Development (ZonMw). The present study was supported by an additional grant from the Netherlands Organization for Health Research and Development (grant No. 7110.0002). The funding organizations had no role in the collection, analysis, and interpretation of data; in the writing of the manuscript; and in the decision to submit the manuscript for publication. The publication of this study was supported by a grant of the Netherlands Organisation for Scientific Research (NWO).

Author details

¹The Generation R Study Group, Erasmus MC-University Medical Centre Rotterdam, Dr. Molewaterplein 50, Rotterdam 3015 GE, the Netherlands.

²Department of Public Health, Erasmus MC-University Medical Centre Rotterdam, Dr. Molewaterplein 50, Rotterdam 3015 GE, the Netherlands.

³Julius Center for Health Sciences and Primary Care, University Medical Center Utrecht, PO Box 85500, Utrecht 3508 GA, the Netherlands.

⁴Department of Paediatrics, Erasmus MC-University Medical Centre Rotterdam, Dr. Molewaterplein 50, Rotterdam 3015 GE, the Netherlands.

⁵Department of Epidemiology, Erasmus MC-University Medical Centre Rotterdam, Dr. Molewaterplein 50, Rotterdam 3015 GE, the Netherlands.

Received: 18 February 2014 Accepted: 10 July 2014

Published: 15 July 2014

References

- Anderson SE, Whitaker RC: Prevalence of obesity among US preschool children in different racial and ethnic groups. *Arch Pediatr Adolesc Med* 2009, **163**:344–348.
- Shaw NJ, Crabtree NJ, Kibirige MS, Fordham JN: Ethnic and gender differences in body fat in British schoolchildren as measured by DXA. *Arch Dis Child* 2007, **92**:872–875.
- de Wilde JA, van Dommelen P, Middelkoop BJ, Verkerk PH: Trends in overweight and obesity prevalence in Dutch, Turkish, Moroccan and Surinamese South Asian children in the Netherlands. *Arch Dis Child* 2009, **94**:795–800.
- Kuepper-Nybelen J, Lamerz A, Bruning N, Hebebrand J, Hertzpitz-Dahlmann B, Brenner H: Major differences in prevalence of overweight according to nationality in preschool children living in Germany: determinants and public health implications. *Arch Dis Child* 2005, **90**:359–363.
- Lynch J, Wang XL, Wilcken DE: Body mass index in Australian children: recent changes and relevance of ethnicity. *Arch Dis Child* 2000, **82**:16–20.
- Fredriks AM, Van Buuren S, Sing RA, Wit JM, Verloove-Vanhorick SP: Alarming prevalences of overweight and obesity for children of Turkish, Moroccan and Dutch origin in The Netherlands according to international standards. *Acta Paediatr* 2005, **94**:496–498.
- Taveras EM, Gillman MW, Kleinman K, Rich-Edwards JW, Rifas-Shiman SL: Racial/ethnic differences in early-life risk factors for childhood obesity. *Pediatrics* 2010, **125**:686–695.
- Jaddoe VW, van Duijn CM, van der Heijden AJ, Mackenbach JP, Moll HA, Steegers EA, Tiemeier H, Uitterlinden AG, Verhulst FC, Hofman A: The Generation R Study: design and cohort update 2010. *Eur J Epidemiol* 2010, **25**:823–841.
- Statistics Netherlands: *Begrippenlijst Bevolking (Definitions on population)*. Voorburg, the Netherlands: Heerlen; 2004. Available from: <http://www.cbs.nl/en-GB/menu/methoden/begrippen/default.htm?languageswitch=on&ConceptID=37>.
- Fredriks AM, van Buuren S, Burgmeijer RJ, Meulmeester JF, Beuker RJ, Brugman E, Roede MJ, Verloove-Vanhorick SP, Wit JM: Continuing positive secular growth change in The Netherlands 1955–1997. *Pediatr Res* 2000, **47**:316–323.
- Cole TJ, Bellizzi MC, Flegal KM, Dietz WH: Establishing a standard definition for child overweight and obesity worldwide: international survey. *BMJ* 2000, **320**:1240–1243.
- Netherlands Bureau for Economic Policy Analysis (www.cpb.nl). Accessed 17-02-2014.
- Netherlands S: *Standaard Onderwijsindeling (Standard Classification of Dutch Education)*. 2003. Available at: <http://www.cbs.nl/nl-NL/menu/methoden/classificaties/overzicht/soi/2003/default.htm>.
- Greenland S, Finkle WD: A Critical Look at Methods for Handling Missing Covariates in Epidemiologic Regression Analyses. *Am J Epidemiol* 1995, **142**:1255–1264.
- Schafer JL: Multiple imputation: a primer. *Stat Methods Med Res* 1999, **8**:3–15.
- Whitaker RC, Orzol SM: Obesity among US urban preschool children: relationships to race, ethnicity, and socioeconomic status. *Arch Pediatr Adolesc Med* 2006, **160**:578–584.
- de Hoog ML, van Eijsden M, Stronks K, Gemke RJ, Vrijkotte TG: Overweight at age two years in a multi-ethnic cohort (ABCD study): the role of prenatal factors, birth outcomes and postnatal factors. *BMC Public Health* 2011, **11**:611.
- Baird J, Fisher D, Lucas P, Kleijnen J, Roberts H, Law C: Being big or growing fast: systematic review of size and growth in infancy and later obesity. *BMJ* 2005, **331**:929.
- Woo JG, Dolan LM, Morrow AL, Geraghty SR, Goodman E: Breastfeeding helps explain racial and socioeconomic status disparities in adolescent adiposity. *Pediatrics* 2008, **121**:e458–e465.
- Boere-Boonekamp MM, L'Hoir MP, Beltman M, Bruil J, Dijkstra N, Engelberts AC: [Overweight and obesity in preschool children (0–4 years): behaviour and views of parents] Overgewicht en obesitas bij jonge kinderen (0–4 jaar): gedrag en opvattingen van ouders. *Ned Tijdschr Geneesk* 2008, **152**:324–330.
- Griffiths LJ, Tate AR, Dezateux C, Millennium Cohort Study Child Health G: Do early infant feeding practices vary by maternal ethnic group? *Public Health Nutr* 2007, **10**:957–964.
- Hulsman A, Senyurek A, Oostenbrink R: Differences in Infant Feeding Habits in the first year between Turkish and Dutch infants] Verschillen in voedingsgewoonten in het eerste levensjaar tussen Turkse en Nederlandse zuigelingen. *Tijdschr Kindergeneesk* [In Dutch] 2005, **73**:201–205.
- Kumanyika SK: Environmental influences on childhood obesity: ethnic and cultural influences in context. *Physiol Behav* 2008, **94**:61–70.
- Wu Q, Suzuki M: Parental obesity and overweight affect the body-fat accumulation in the offspring: the possible effect of a high-fat diet through epigenetic inheritance. *Obes Rev* 2006, **7**:201–208.
- Bhopal R: Glossary of terms relating to ethnicity and race: for reflection and debate. *J Epidemiol Community Health* 2004, **58**:441–445.

26. Stronks K, Kulu-Glasgow I, Agyemang C: **The utility of 'country of birth' for the classification of ethnic groups in health research: the Dutch experience.** *Ethn Health* 2009, **14**:1–14.
27. WHO Expert Consultation: **Appropriate body-mass index for Asian populations and its implications for policy and intervention strategies.** *Lancet* 2004, **363**:157–163.
28. Jaddoe VW, van Duijn CM, van der Heijden AJ, Mackenbach JP, Moll HA, Steegers EA, Tiemeier H, Uitterlinden AG, Verhulst FC, Hofman A: **The Generation R Study: design and cohort update until the age of 4 years.** *Eur J Epidemiol* 2008, **23**:801–811.

doi:10.1186/1471-2458-14-722

Cite this article as: van Rossem *et al.*: The role of early life factors in the development of ethnic differences in growth and overweight in preschool children: a prospective birth cohort. *BMC Public Health* 2014 **14**:722.

Submit your next manuscript to BioMed Central and take full advantage of:

- Convenient online submission
- Thorough peer review
- No space constraints or color figure charges
- Immediate publication on acceptance
- Inclusion in PubMed, CAS, Scopus and Google Scholar
- Research which is freely available for redistribution

Submit your manuscript at
www.biomedcentral.com/submit

