

RESEARCH ARTICLE

Open Access

# Causes of death and associated risk factors among climacteric women from Southern Brazil: a population based-study

Verônica Colpani<sup>1</sup>, Karen Oppermann<sup>2\*</sup> and Poli Mara Spritzer<sup>1,3</sup>

## Abstract

**Background:** Aging and menopause are particular cardiovascular risk factors for women, due to estrogen deprivation at the time of menopause. Studies show that diabetes mellitus (DM), smoking, hypertension, high body mass index (BMI), and serum lipids are associated with increased risk of cardiovascular disease (CVD), the main cause of female mortality in Brazil. The aim of this study was to assess the mortality rate, causes of death and associated risk factors in a cohort of women from Brazil.

**Methods:** A longitudinal population-based study of menopausal status is currently underway in a city in South Brazil. In 2010, a third follow-up of this population was performed to assess cardiovascular risk and mortality rate between 1995 and 2011. For this analysis, 358 participants were studied. At baseline, participants had completed a standardized questionnaire including demographic, lifestyle, medical and reproductive characteristics. In addition to the contacts with relatives, mortality data were obtained through review of medical records in all city hospitals and the Center for Health Information (NIS/RS-SES). Multivariate-adjusted hazard risk (HR) and 95% confidence intervals (CI95%) were estimated using Cox proportional hazards regression. Survival curves were estimated using the Kaplan-Meier curve.

**Results:** There were 17 (4.7%) deaths from all causes during the study period. Seven (41.2%) deaths were caused by CVD, including four cases of stroke and three cases of myocardial infarction. Six (35.3%) deaths were due to cancer, and four (23.5%) were due to other reasons. In the age and smoking-adjusted multivariate models, diabetes (HR 6.645, 95% CI: 1.938–22.79,  $p = 0.003$ ), alcohol intake (HR 1.228, 95% CI: 1.014–1.487,  $p = 0.035$ ) and postmenopausal status (HR = 6.216, 95% CI: 0.963–40.143,  $p = 0.055$ ) were associated with all-cause mortality. A significant association was found between abdominal obesity (WHR  $\geq 0.85$ ) and mortality even after the adjustment for BMI (HR = 9.229, 95% IC: 2.083–41.504,  $p = 0.003$ ).

**Conclusion:** CVD was an important cause of mortality in this cohort and DM and/or central adiposity were associated with all-cause mortality. Lifestyle and dietary factors seem to be related to risk of mortality in middle-aged women.

**Keywords:** Menopause, Mortality, Risk factors

\* Correspondence: karenoppermann@gmail.com

<sup>2</sup>Medical School of Universidade de Passo Fundo and São Vicente de Paulo Hospital, Rua Teixeira Soares 885/704, CEP 99010-081 Passo Fundo, RS, Brazil  
Full list of author information is available at the end of the article

## Background

Life expectancy is increasing in the world as well as in Brazil, where recent data from the National Geography and Statistics Institute [1] show that females and males are now expected to reach 77.3 and 69.7 years of age respectively, as compared to 72.9 and 65.1 years only a decade ago. This population aging process will have an impact on health and social policies. However, only a few studies are available about middle-aged female mortality, especially in Brazil [2,3], where a vast territory and socioeconomic diversity contribute to a scenario of public health inequity. Cultural and economic differences may influence diet, health, and behavioral factors and consequently mortality rates. Thus, knowledge of the pattern of mortality risk is useful to support actions of prevention and control.

Aging and menopause may be considered as particular cardiovascular risk factors for women, due to estrogen deprivation at the time of menopause [4]. Also, studies have consistently shown that diabetes mellitus (DM) [5,6], smoking [7,8], hypertension [9,10], high body mass index (BMI) [11-13] and serum lipids [14] are associated with increased CVD risk. Therefore, even though CVD mortality has decreased in recent decades [15,16] following improvements in prevention, diagnosis, and timing of treatment [17], along with gradual improvement in economic conditions, more widespread access to drugs [18], health surveillance, and policies of health promotion [15], CVD remains a major cause of death [15], and the main cause of female mortality in Brazil [15,17,19].

Based on these data, and on the scarcity of literature about this subject, the present study aims to assess mortality, CVD risk factors and causes of death in a cohort of pre-, peri- and postmenopausal women in the South of Brazil.

## Methods

### Study population

Participants were selected from the population-based cohort of the longitudinal menopause study that has been underway in the city of Passo Fundo, South Brazil, since 1995 [20,21]. As part of this project, an initial cross-sectional study was performed between 1995 and 1997 to investigate ovarian volume in pre- and perimenopausal women. Sampling was carried out in two stages. First, 154 census sections (geographical subdivisions of the city defined by the Brazilian Institute of Geography and Statistics) were randomly selected. One block in each census section was picked by lot; two women were interviewed in each block after the randomization method described previously [20,21]. A representative sample of 298 women aged 35 to 55 years who had menstruated at least once in the past 12 months was randomly identified.

In the second field visit, conducted between 2001 and 2002, 239 women from the baseline cohort were located and interviewed. In view of potential losses to follow-up and of the increasing city population, 119 additional women aged 35 to 62 years were sampled to guarantee enough statistical power for the analysis. The final sample was 358 women. The samples were selected at random based on the first census sections [22] (Figure 1).

### Mortality, causes of death, and CVD risk factors

In 2010, a third follow-up was initiated in order to assess cardiovascular risk and mortality rate. All 358 participants or their relatives were reached, and information regarding participant deaths was obtained for the period ending in November 2011. In addition to the interviews, the medical records of city hospitals and the Center for Health Information (NIS/RS-SES) were reviewed. All deaths between 1995 and 2011 were included in this analysis.

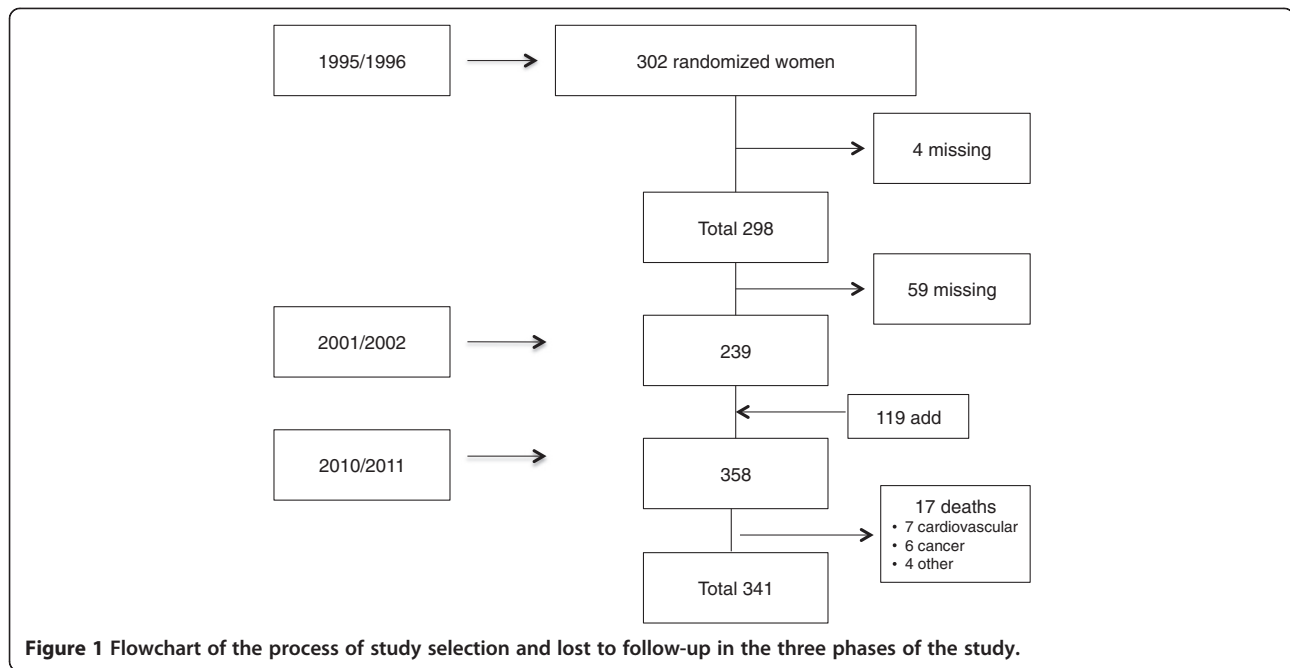
Medical records were reviewed to collect information on age at death, date, and cause of death. The causes of death were coded using the International Classification of Diseases, 10th revision [23]. Deaths were analyzed for all-cause and cardiovascular causes (ICD-10: I00-I99), neoplasms (ICD-10: C00-C97), and respiratory causes (ICD-10: J00-J99).

Ethics approval for the study was granted by the Research Ethics Committees at the University of Passo Fundo and the São Vicente de Paulo Hospital. All study participants signed an informed consent.

### Social characteristics

The participants were interviewed using a pretested standardized questionnaire covering demographic characteristics (age and self-reported race) and education (years of successful formal education, described as years at school). Skin color was classified according to self-report [21,22]. Women were classified in terms of alcohol consumption as nondrinkers, social drinkers (1 to 15 g alcohol/day), or abusers (at least 15 g alcohol/day) [24]. Smoking status was categorized as current, ex-smoker, or nonsmoker [22]. Physical activity was investigated through a previously tested standardized questionnaire [25]; for each type of physical activity, the metabolic equivalent [26] and overall calorie expenditure were calculated. Women who expended at least 1000 kcal/week (approximately 3.5 hours per week walking, climbing stairs, swimming, playing sports, doing yard work, and so forth) were considered to be physically active, whereas the others were classified as sedentary [22].

Women were classified according to their baseline menopausal status: premenopause was defined as no change in menstrual frequency or flow; perimenopause was defined as changes in menstrual frequency or flow



**Figure 1** Flowchart of the process of study selection and lost to follow-up in the three phases of the study.

in the 12 months before the study; and postmenopause was defined as 12 months or more of amenorrhea, including as a result of medical interventions such as bilateral oophorectomy [21,22]. A “hysterectomy” category was created for women who had undergone hysterectomy and whose menopausal status could not be classified [27].

The use of hormone therapy (HT), estrogen, estrogen plus progestogen or tibolone was verified by asking the women to show the medication box or the physician’s prescription [21,22].

#### Anthropometric measurements

Body weight and height was assessed at the beginning of the study in 1995. Weight (kg) was measured to the nearest 100 g using a Filizola® scale, Model 31 (Ind Filizola-SA, São Paulo, Brazil), and height (cm) was measured to the nearest 0.1 cm with a wall-mounted fixed stadiometer. Special attention was taken to ensure that the participants were positioned with the Frankfort plane [28] horizontal and that they were barefoot. These were used to calculate BMI, dividing weight in kilograms by height squared ( $m^2$ ), and categorized as <25.0, 25.0–29.9, and  $\geq 30.0$   $kg/m^2$  [29].

Other anthropometric measurements were made in duplicate between 2001 and 2003, including waist circumference (WC) (measured at the midpoint between the lower rib margin and the iliac crest, perpendicularly to the long axis of the body, with the participant standing balanced on both feet, spread approximately 20 cm apart, with arms hanging freely), hip circumference (widest circumference over the buttocks), and waist to hip

ratio (WHR) (waist circumference divided by hip circumference) [21,22,28]. All procedures followed standardized recommendations [30] and the equipment was periodically calibrated.

#### Clinical variables

Previous diagnosis of DM was verified based on physician report or current use of anti-diabetic medication. Self-report of hypercholesterolemia or use of anti-cholesterol medication was used to define dyslipidemia.

Blood pressure was measured after a 10-minute rest. The same calibrated mercury manometer attached to a 12.5 × 23 cm inflatable cuff was used in all participants, and the fifth Korotkoff sound was adopted to determine diastolic pressure. Hypertension was defined as systolic blood pressure  $\geq 140$  and/or diastolic blood pressure  $\geq 90$  mmHg or current use of antihypertensive medication [31,32].

All participants were submitted, in 2003, to blood sampling between 8 and 10 a.m. after an overnight fast of 10 to 12 hours. Total cholesterol, high-density cholesterol (HDL-c), triglycerides, and glucose levels were determined by a colorimetric-enzymatic method (Architect C800, ABBOTT Systems). Low density lipoprotein cholesterol (LDL-c) was determined indirectly using the following formula:  $LDL-c = total\ cholesterol - (HDL-c + triglycerides/5)$  [33,34].

#### Statistical analyses

Continuous variables are reported as means  $\pm$  SDs. Categorical variables are reported as frequencies (%). Differences in baseline clinical characteristics between groups

were analyzed by the Student *t* test (for continuous variables with normal distribution), Mann-Whitney's U test (for continuous variables with skewed distribution), or  $\chi^2$  test (for categorical variables). Survival time for each participant was defined as the time between the date of study entry and the occurrence of death. Univariate predictors of mortality during follow-up were analyzed by Cox regression models and calculation of hazard rate ratios with 95% CI. For the estimation of hazard ratios, a Cox regression model was fit including relevant independent variables to estimate the associations between baseline characteristics and mortality. Multivariate analysis included only variables with a p-value of 0.05 or lower on univariate analysis. Adjusted hazard ratios (HR) and 95% confidence intervals (CI95%) for mortality were estimated. We calculated adjusted hazard ratios after multivariate correction for age and smoking. The final model included all variables with  $P < 0.05$  or according to clinical plausibility. Collinearity for the model variables was evaluated using variance inflation factors and tolerances. No collinearity was found. Survival curves were estimated using the Kaplan-Meier method. Log-rank p-values were calculated to test for significant differences between mortality and DM. All statistics analyses were

performed using SPSS 20.0 software.  $P < 0.05$  was considered statistically significant for all analyses.

## Results

### Baseline characteristics

A total of 358 women were studied during a mean follow-up of  $13.4 \pm 3.3$  years. Table 1 shows the distribution of baseline characteristics in survivors and non-survivors. The mean age of the overall sample was  $44.29 \pm 6.0$  years. Most participants were white (86.3%), with low levels of schooling ( $8.4 \pm 4.7$  years). Considering menopause status, 162 (47.1%) were premenopausal, 134 (39%) were perimenopausal, 37 (10.3%) were postmenopausal, and 11 (3.2%) had undergone a hysterectomy. Of the 358 individuals included in the study, 177 (49.4%) reported having hypertension; 56 (15.6%) used HT, and 14 (3.9%) were diabetic. Smoking, a well-known risk factor for CVD, was found in 96 (26.8%) of the overall sample, and in 8 (47.1%) deceased patients. Survivors were significantly younger and almost half were premenopausal. They also had higher education level and fewer cases of previous DM.

Table 2 describes the metabolic profile of participants. In general, they had low level of physical activity during their leisure time and showed baseline overweight and

**Table 1 Demographic characteristics of participants at baseline**

Characteristic	Overall group (n = 358)	Survivors (n = 341)	Non-survivors (n = 17)	p <sup>a</sup>
Age (years)	44.29 ± 6.01	44.13 ± 6.01	48.00 ± 4.48	0.009
White skin color (yes)	86.3	87.0	76.5	0.263
Educational level (years)	8.44 ± 4.77	8.55 ± 4.73	6.29 ± 5.21	0.062
0-4	24.6	22.9	52.9	0.046
5-8	28.5	29.1	17.6	
9-11	21.5	21.8	17.6	
≥12	25.4	26.2	11.8	
Menopausal status				
Premenopause	47.1	48.2	23.5	0.040
Perimenopause	39.0	38.8	41.2	
Postmenopause	10.3	9.8	29.4	
Hysterectomy	3.2	3.1	5.9	
Smoker (yes)	26.8	26.0	47.1	0.055
Alcohol intake (g)	0.18 (0-1.78)	0.21 (0-1.82)	0.08 (0-0.57)	0.213
Nondrinkers	29.3	28.5	41.2	0.480
Social drinkers	66.5	67.4	52.9	
Abusers	4.2	4.1	5.9	
Hypertension (yes)	49.4	49.3	52.9	0.767
Diabetes (yes)	3.9	2.9	23.5	<0.001
Dyslipidemia (yes)	6.7	6.5	11.8	0.395
Hormonal therapy	15.6	15.0	29.4	0.109

<sup>a</sup>Continuous variables were compared using the Student's *t*-test and expressed as means ± standard deviation or median (IQ). Categorical variables were compared using Pearson's chi-square test and expressed as percentage.

central adiposity. A relatively healthy lipid profile was observed, with normal or borderline values. WHR and HDL-c were significantly different in survivors and non-survivors.

### Causes of death

The mean age at death was  $57.8 \pm 5.5$  years. In the 13 years analyzed, 17 (4.7%), deaths from all causes were recorded. Among these, seven (41.2%) deaths were caused by CVD, including four cases of stroke and three myocardial infarctions. There were six (35.3%) deaths due to kidney (n = 1), breast (n = 1), lung (n = 2) and uterine (n = 2) cancer, and four (23.5%) deaths due to other reasons, such as polytrauma, asthma, and diabetes.

### Survival estimates

The survival for the entire cohort in 6, 12 and 15 years was 98.6%, 96.8% and 94.3%, respectively (Figure 2).

In a univariate analysis (Table 3), older age (HR = 1.141, 95% IC: 1.051-1.239,  $p = 0.002$ ), menopausal status (postmenopause HR = 16.738, 95% CI: 3.644-16.895,  $p < 0.001$ ),

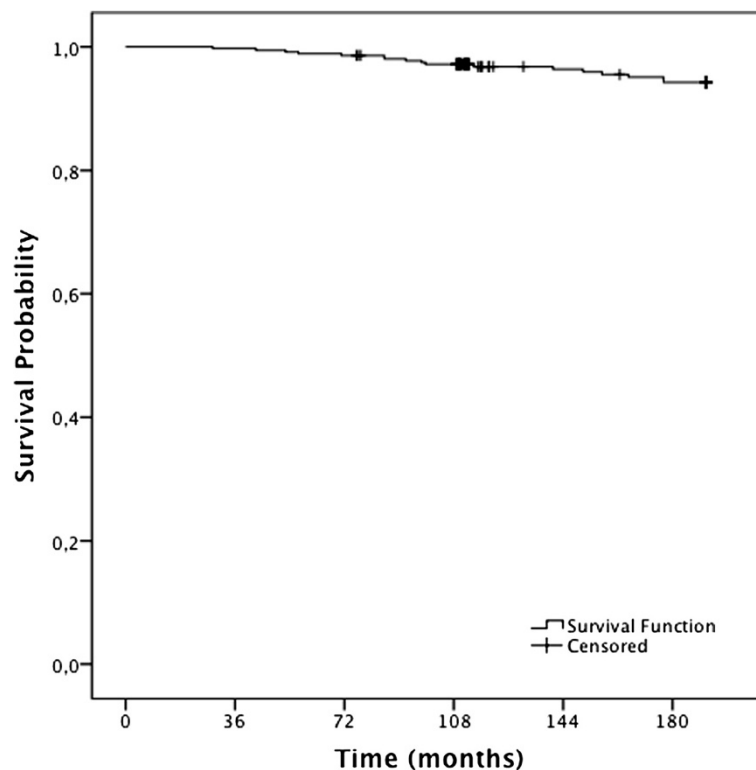
hysterectomy HR = 11.788, 95% CI: 3.644-121.382,  $p = 0.038$ ), DM (HR = 10.439, 95% CI: 3.367- 32.367,  $p < 0.001$ ), and  $WHR \geq 0.85$  (HR = 3.556, 95% CI: 1.253-10.094,  $p = 0.017$ ) were associated with a major probability of death. Years at school was statistically meaningful in the univariate model (HR = 0.888, 95% CI: 0.792-0.997,  $p = 0.044$ ), suggesting a protective association of higher level of education.

Table 4 presents the results of multivariate analysis resulting from the Cox regression model, taking into account the confounding factors (age and smoking). Previous diagnosis of DM,  $WHR \geq 0.85$ , and postmenopause status remained the leading risk factors for all cause mortality, similar to those found in the crude analysis and increasing the risk of death. Diabetic women had higher HR for mortality (HR = 6.645, 95% CI: 1.938-22.79,  $p = 0.003$ ). Postmenopausal status tended to be associated with, and entailed a six-fold increase in, the risk of death (HR = 6.216, IC: 0.963-40.143,  $p = 0.055$ ). Alcohol intake was an independent risk factor for mortality (HR = 1.228, 95% CI: 1.014-1.487,  $p = 0.035$ ). The magnitude of the association

**Table 2 Anthropometric and metabolic characteristics of participants at baseline**

Characteristic	Overall group (n = 358)	Survivors (n = 341)	Non-survivors (n = 17)	p <sup>a</sup>
LPA (MET) <sup>c</sup>	5.68 (0-13.85)	5.60 (0-13.40)	7.41 (1.6-17.92)	0.482
$\geq 2000$ cal/sem	7.5	7.4	11.8	0.051
1000-1999 cal/sem	16.2	15.9	23.5	
$< 1000$ cal/sem	76.3	76.8	64.7	
BMI (kg/m <sup>2</sup> ) <sup>b</sup>	27.35 $\pm$ 5.46	27.39 $\pm$ 5.55	26.60 $\pm$ 3.11	0.343
$\leq 24.9$	37.7	38.4	23.5	0.968
25-29.9	35.8	34.3	64.7	
$\geq 30.0$	26.5	27.3	11.8	
WHR (cm) <sup>c</sup>	0.83 $\pm$ 0.075	0.83 $\pm$ 0.072	0.90 $\pm$ 0.09	$< 0.001$
$\geq 0.85$	43.0	41.3	76.5	0.004
WC (cm) <sup>c</sup>	85.28 $\pm$ 12.25	85.11 $\pm$ 12.35	88.73 $\pm$ 9.66	0.235
$\geq 88$	38.3	37.6	47.1	0.445
TC (mg/dl) <sup>c</sup>	200.01 $\pm$ 41.64	200.70 $\pm$ 40.03	198.0 $\pm$ 47.68	0.794
$\geq 200$	48.0	47.8	50.0	0.872
HDL-c (mg/dl) <sup>c</sup>	52.45 $\pm$ 10.91	52.35 $\pm$ 10.54	57.68 $\pm$ 9.97	0.049
$< 50$	40.7	41.3	25.0	0.190
LDL-c (mg/dl) <sup>c</sup>	122.11 $\pm$ 35.89	119.95 $\pm$ 39.34	114.50 $\pm$ 41.18	0.386
$\geq 160$	14.9	14.6	12.5	0.783
TG (mg/dl) <sup>c</sup>	114.0 (79.25-157.5)	114.0 (79.25-159.75)	116.5 (73.25-150.5)	0.886
$\geq 150$	27.4	27.5	23.5	0.716
GLU(mg/dL) <sup>c</sup>	79.0 (71.0-86.0)	79.0 (70.25-86.0)	81.0 (72.5-93.5)	0.258
$\geq 126$	4.5	4.1	12.5	0.114

<sup>a</sup>Continuous variables were compared using the Student's t-test and Mann-Whitney's U test and expressed as means  $\pm$  standard deviation or median (IQ). Categorical variables were compared using Pearson's chi-square test and expressed as percentage. <sup>b</sup>Data from baseline. <sup>c</sup>Data from 2003 interviews. BMI: body mass index; GLU: levels of plasma glucose; HDL-c: high-density lipoprotein cholesterol; LDL-c: light-density lipoprotein cholesterol; LPA: leisure physical activity in the previous year; MET: metabolic equivalent; TC: plasma total cholesterol; TG: triglycerides; WC: waist circumference; WHR: waist-to-hip ratio.



**Figure 2** Kaplan-Meier estimates of survival among women (n = 358).

between abdominal obesity ( $WHR \geq 0.85$ ) and mortality became even greater after the adjustment for BMI (HR = 2.974, 95% CI: 1.039 – 8.510,  $p = 0.042$ ).

Figure 3 shows Kaplan-Meier curves for DM diagnosis. The results support the findings of the adjusted model, according to which mortality is increased in the presence of diabetes.

## Discussion

To the best of our knowledge, this is the first Brazilian population-based study evaluating survival and causes of death in pre-, peri- and postmenopausal women. This prospective follow-up study including women in their middle age indicates that CVD was the main cause of mortality. In addition, postmenopausal status, DM, and central adiposity were associated with increased risk of mortality, independently of age and smoking. The present results support the findings of two previous studies investigating Brazilian postmenopausal women aged 60 to 80 years [2,3].

Coronary heart disease is the leading cause of death in women aged 60 years or older [35]. In Brazil, diseases of the circulatory system are a significant cause of mortality [19]. A study by Schmitt et al. [36] underscores that, between 1979 and 2004, cardiovascular diseases, neoplasms, and ill-defined causes were the main causes of death in women in Brazil; these results are similar to

those observed in the present study. Therefore, despite the small number of deaths (4.7%), our study confirms data from previous studies, supporting the notion that CVD are the main cause of death in women in Brazil [15,17,19].

There was an increased risk of mortality in women with DM, a recognized clinical condition associated with risk for cardiovascular mortality [6,37,38]. The association between DM and CVD has been suggested to be stronger in women than in men [6,37,39]. Cardiovascular mortality is 3 to 5 times higher in diabetic compared to non-diabetic women, and 2 to 3 times higher in diabetic vs. non-diabetic men [40]. A relatively larger mortality for women with DM compared with those with prior CVD would suggest insufficient attention to CVD prevention in these women [39]. It has been suggested that physicians have a less aggressive management of CVD in women than in men, despite the greater cardiac disability in women [41]. Gender disparities are also evident both in the clinical presentation as well as misperceptions and barriers to preventive strategies [42].

It has also been suggested that diabetic women have accelerated atherogenesis. This process is not completely understood, but it is at least in part related to more severe lipid and lipoprotein abnormalities, particularly elevated levels of triglycerides and reduced levels of HDL-c, among diabetic women [43,44]. Increased levels of



**Table 3 Crude mortality hazard ratio (HR) and 95% confidence intervals (95% CI) for survival in 358 women from a South Brazilian cohort between 1995-2010**

Predicting factor	HR	95% CI	p
Age (years)	1.141	1.051-1.239	0.002
Years at school <sup>1</sup>	0.888	0.792-0.997	0.044
0 – 4	5.240	1.131-24.275	0.034
5 – 8	1.455	0.243-8.709	0.682
9 – 11	1.869	0.312-11.184	0.493
White skin color (yes)	0.424	0.137-1.308	0.135
Menopausal status <sup>2</sup>			
Perimenopause	2.495	0.729	0.145
Postmenopause	16.738	3.644	<0.001
Hysterectomy	11.788	1.145	0.038
Smoker <sup>3</sup> (yes)	2.465	0.951-6.389	0.063
Alcohol intake <sup>4</sup>			
Social Drinker	0.536	0.199-1.440	0.216
Abusers	0.977	0.120-7.942	0.983
Alcohol intake (10 g)	1.193	0.983-1.447	0.074
Hypertension (yes)	1.584	0.601-4.176	0.353
Diabetes (yes)	10.439	3.367-32.367	<0.001
Dyslipidemia (yes)	1.828	0.418-7.994	0.423
HT (yes)	2.856	0.996-8.187	0.051
LPA <sup>5,a</sup>			
1000-1999 cal/sem	0.867	0.159-4.737	0.870
<1000 cal/sem	0.520	0.115-2.346	0.395
BMI (kg/m <sup>2</sup> )	0.978	0.888-1.077	0.649
WHR ≥ 0.85 <sup>a</sup>	3.629	1.278-10.301	0.015
WC ≥ 88 cm <sup>a</sup>	1.021	0.986-1.058	0.236
TC ≥ 200 mg/dL <sup>a</sup>	1.078	0.404-2.872	0.881
HDL-c < 50 mg/dL <sup>a</sup>	0.472	0.152-1.464	0.194
LDL-c ≥ 160 mg/dL <sup>a</sup>	0.790	0.179-3.481	0.755
TG ≥ 150 mg/dL <sup>a</sup>	0.800	0.261-2.453	0.696
GLU ≥ 126 mg/dL <sup>a</sup>	3.056	0.694-13.460	0.140

<sup>1</sup>reference: >12 years at school. <sup>2</sup>reference: premenopause. <sup>3</sup>reference: nonsmoker. <sup>4</sup>reference: nondrinker. <sup>5</sup>reference: ≥ 2000 cal/sem. <sup>a</sup>Data from 2003 interviews. P-value significance: ≤0.05. BMI: body mass index; GLU: levels of plasma glucose; HDL-c: high-density lipoprotein cholesterol; HT: hormonal therapy; LDL-c: light-density lipoprotein cholesterol; LPA: Leisure physical activity in the last year; MET: metabolic equivalent; TC: plasma total cholesterol; TG: triglycerides; WC: waist circumference; WHR: waist-to-hip ratio.

endothelin-1 associated with atherogenesis induce smooth muscle hypertrophy, stimulate vasoconstriction, and activate the renin-angiotensin system. Simultaneously, reduced prostacyclin and nitric oxide activity enhances platelet aggregation and adhesiveness, leading to endothelial dysfunction. These facts may contribute to the poorer outcomes in DM [45,46].

Concerning the relationship between BMI and mortality, an association between these aspects is widely

**Table 4 Adjusted mortality hazard ratio (HR) and 95% confidence intervals (95% CI) for survival in 358 women from a South Brazilian cohort between 1995-2010**

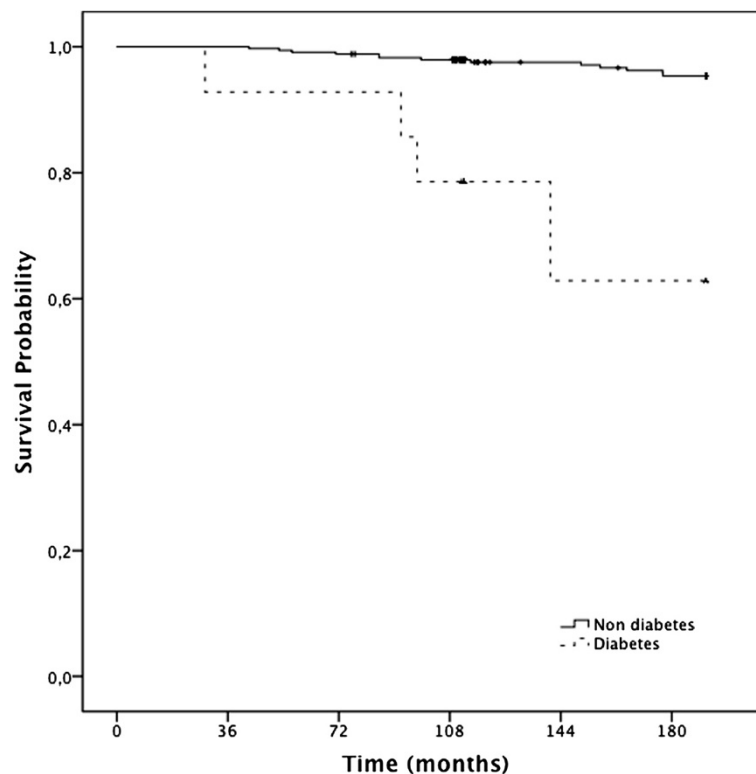
Predicting factor	HR	95% CI	p
Diabetes	6.645	1.938-22.79	0.003
WHR ≥ 0.85	2.974	1.039-8.510	0.042
Menopausal status			
Perimenopause	2.260	0.656-7.784	0.196
Postmenopause	6.216	0.963-40.143	0.055
Hysterectomy	4.257	0.325-55.779	0.270
Alcohol intake (10 g)	1.228	1.014-1.487	0.035

P-value significance: ≤0.05. CI: confidence interval; HR: hazard ratio; WHR: waist-to-hip ratio.

accepted [12,47-49]. Even though this association was not identified in the present study, BMI is believed to be a surrogate measure of general adiposity. However, BMI measures do not distinguish between fat mass and lean mass [50]. Furthermore, changes in lifestyle patterns, such as reduction of calorie intake and increased physical activity, reduce body fat and increase muscle mass. Individuals within the overweight category may be fit and muscular rather than having excess fat [51], and a U-shaped relationship has been described, with increased mortality only at the extremes of underweight and BMI > 45 kg m [49-51]. In addition to this, data from the MacArthur Successful Aging Study suggest that WHR is the most suitable measure for risk stratification of high functioning, especially in older adults [52]. All these aspects reinforce our findings that measures of central adiposity are a good indicator of mortality rates.

The influence of HT on the risk of mortality still needs to be appropriately defined. In our study, univariate analysis showed a trend toward higher mortality among HT users, and age probably had an effect on this group. HT is considered a Class III intervention and is not effective for secondary CVD prevention in postmenopausal women [53,54]. The results from the Women's Health Initiative study, the Heart and Estrogen/Progestin Replacement Study, and the Women's Estrogen for Stroke Trial indicate that the use of estrogen alone or estrogen plus progestin does not prevent, and could actually increase, the risk of CVD in older postmenopausal women or in those with established CV disease [54-58]. Conversely, in women younger than 60 years and within 10 years of menopause, estrogen therapy has been associated with decreasing risk of mortality [59].

Menopausal status is an important modifier factor in female mortality [60]. Previous analyses show an association of central adiposity with postmenopausal status [22,61]. Also, when the risks of inactivity were assessed for DM, metabolic syndrome, and hypertension, stronger risk has been detected for post- compared to pre- and



**Figure 3** Kaplan Meier estimates of survival among women, according to diabetes prevalence (n=358).

perimenopausal women [27]. Postmenopausal women are more prone to central adiposity [62] and development of occult DM than premenopausal individuals [60], and these risk factors are deeply linked to CVD and consequently to mortality.

Even without presenting a significant HR for death in the crude model, alcohol is a recognized risk factor linked to mortality. This was observed in the present adjusted model. A study with data from the Nurses' Health Study demonstrates that small to moderate alcohol ingestion is related to lower mortality [10]. In a meta-analysis, a J-shaped relation was observed between mortality and alcohol intake; and this inverse association rather disappeared in women drinking lower doses than men [63]. In the present study, we found a greater risk of mortality in drinkers. This may reflect the fact that alcohol intake increases the relative risk of death in the presence of other pathologies, such as breast cancer [64].

Moreover, our study suggests that women who had more years in school had a reduction in the risk of death, as previously reported [65]. This association may be explained by the fact that women with more years in school usually seek health care, have more knowledge of prevention and thus their disease may be detected at an earlier phase with more successful outcomes. However, this difference lost significance in the multivariate analysis, perhaps because of the low number of events.

Strengths of this study are the use of a population-based cohort and a long follow-up period. Conversely, limitations include the lack of information on duration and treatment of DM and hypertension. Our analyses focus on leisure physical activity because it was the only category of physical activity measure in our 2001-2003 follow-up. This may have led to an underestimation of the level of physical activity, with misclassification (participants who were active in other types of physical activity could have a higher metabolic equivalent (MET) than that which was calculated and this would influence mortality). It is important to highlight that our sample is composed of relatively young women, which explains the low number of events (death).

## Conclusions

The present results suggest that CVD was an important cause of mortality in this cohort, and that DM and/or central adiposity were associated with all-cause mortality in a representative sample of middle-aged women from South Brazil. Lifestyle and dietary factors seem to be related to risk of mortality in middle-aged women.

## Abbreviations

BMI: Body mass index; CI: Confidence interval; CNCD: Chronic non communicable diseases; CVD: Cardiovascular disease; DM: Diabetes mellitus; GLU: Levels of plasma glucose; HR: Hazard ratio; HDL-c: High-density lipoprotein cholesterol; HT: Hormonal therapy; LDL-c: Light-density



lipoprotein cholesterol; LPA: Leisure physical activity in the last year; MET: Metabolic equivalent; TC: Plasma total cholesterol; TG: Triglycerides; WHR: Waist-to-hip ratio; WC: Waist circumference.

#### Competing interests

The authors declare that they have no competing interests.

#### Authors' contributions

VC, KO and PMS were involved in the conception and design of the study, data collection and analysis, and drafted the article. All the authors read and approved the final manuscript.

#### Acknowledgements

This work was supported by grants from Brazilian National Institute of Hormones and Women's Health, Conselho Nacional de Desenvolvimento Científico e Tecnológico [CNPq INCT 573747/2008-3], Brazil. The authors thank Alexandre Pereira Tognon for the preliminary statistical analyses. The authors also thank the following medical students from University of Passo Fundo, Brazil: Ana Paula Lodi, Guilherme Gustavo Dorigo, Isabela Albuquerque Severo de Miranda, Laiza Beck Hahn, Luana Pedrosa Palludo, and Rafaela Lazzari Pietroski for collaborating with collection.

#### Author details

<sup>1</sup>Gynecological Endocrinology Unit, Division of Endocrinology, Hospital de Clínicas de Porto Alegre, Porto Alegre, RS, Brazil. <sup>2</sup>Medical School of Universidade de Passo Fundo and São Vicente de Paulo Hospital, Rua Teixeira Soares 885/704, CEP 99010-081 Passo Fundo, RS, Brazil. <sup>3</sup>Laboratory of Molecular Endocrinology, Department of Physiology, Universidade Federal do Rio Grande do Sul, Porto Alegre, RS, Brazil.

Received: 22 May 2013 Accepted: 5 February 2014

Published: 21 February 2014

#### References

- Instituto Brasileiro de Geografia e Estatística: **Brasil: tábua completa de mortalidade - 2010**. In *Gerência de Estudos e Análises da Dinâmica Demográfica - GEADD*. Edited by Diretoria de Pesquisas - DPE, Coordenação de População e Indicadores Sociais - COPIS. Rio de Janeiro: IBGE; 2011.
- Cabrera M, Gebara O, Diamant J, Nussbacher A, Rosano G, Wajngarten M: **Metabolic syndrome, abdominal obesity, and cardiovascular risk in elderly women**. *Int J Cardiol* 2007, **114**:224–229.
- Cabrera M, Wajngarten M, Gebara O, Diamant J: **Relationship between body mass index, waist circumference, and waist-to-hip ratio and mortality in elderly women: a 5-year follow-up study**. *Cad Saude Publica* 2005, **21**:767–775.
- He L, Tang X, Li N, Wu YQ, Wang JW, Li JR, Zhang ZX, Dou HD, Liu JJ, Yu LP, Xu HT, Zhang JG, Hu YH: **Menopause with cardiovascular disease and its risk factors among rural Chinese women in Beijing: a population-based study**. *Maturitas* 2012, **72**:132–138.
- Hu F, Stampfer M, Solomon C, Liu S, Willett W, Speizer F, Nathan D, Manson J: **The impact of diabetes mellitus on mortality from all causes and coronary heart disease in women: 20 years of follow-up**. *Arch Intern Med* 2001, **161**:1717–1723.
- Campbell P, Newton C, Patel A, Jacobs E, Gapstur S: **Diabetes and cause-specific mortality in a prospective cohort of one million U.S. adults**. *Diabetes Care* 2012, **35**:1835–1844.
- Corrêa P, Barreto S, Passos V: **Smoking-attributable mortality and years of potential life lost in 16 Brazilian capitals, 2003: a prevalence-based study**. *BMC Public Health* 2009, **26**:206.
- Eichner J, Wang W, Zhang Y, Lee E, Welty T: **Tobacco use and cardiovascular disease among American Indians: the strong heart study**. *Int J Environ Res Public Health* 2010, **7**:3816–3830.
- Ezzati M, Oza S, Danaei G, Murray C: **Trends and cardiovascular mortality effects of state-level blood pressure and uncontrolled hypertension in the United States**. *Circulation* 2008, **117**:905–914.
- Baer H, Glynn R, Hu F, Hankinson S, Willett W, Colditz A, Stampfer M, Rosner B: **Risk factors for mortality in the nurses' health study: a competing risks analysis**. *Am J Epidemiol* 2011, **173**:319–329.
- Manson J, Willett W, Stampfer M, Colditz G, Hunter D, Hankinson S, Hennekens C, Speizer F: **Body weight and mortality among women**. *N Engl J Med* 1995, **333**:677–685.
- Klenk J, Nagel G, Ulmer H, Strasak A, Concin H, Diem G, Rapp K, VHM&PP Study Group: **Body mass index and mortality: results of a cohort of 184,697 adults in Austria**. *Eur J Epidemiol* 2009, **24**:83–91.
- Sasazuki S, Inoue M, Tsuji I, Sugawara Y, Tamakoshi A, Matsuo K, Wakai K, Nagata C, Tanaka K, Mizoue T, Tsugane S, Research Group for the Development and Evaluation of Cancer Prevention Strategies in Japan: **Body mass index and mortality from all causes and major causes in Japanese: results of a pooled analysis of 7 large-scale cohort studies**. *J Epidemiol* 2011, **21**:417–430.
- Prospective Studies Collaboration, Lewington S, Whitlock G, Clarke R, Sherliker P, Emberson J, Halsey J, Qizilbash N, Peto R, Collins R: **Blood cholesterol and vascular mortality by age, sex, and blood pressure: a meta-analysis of individual data from 61 prospective studies with 55,000 vascular deaths**. *Lancet* 2007, **370**:1829–1839.
- Duncan B, Stevens A, Iser B, Malta D, Silva G, Schmidt M: **Mortalidade por doenças crônicas no Brasil: situação em 2009 e tendências de 1991 a 2009**. In *Saúde Brasil 2010: uma análise da situação de saúde e de evidências selecionadas de impacto de ações de vigilância em saúde*. Edited by Ministério da Saúde, Secretaria de Vigilância em Saúde, Departamento de Análise de Situação em Saúde, vol. 1. Brasília: Ministério da Saúde; 2011:117–133.
- Mansur A, Favarato D: **Mortalidade por doenças cardiovasculares no Brasil e na região metropolitana de São Paulo: atualização 2011**. *Arq Bras Cardiol* 2012, **99**:755–761.
- Haddad N, Silva M: **Mortality due to cardiovascular disease in women during the reproductive age (15 to 49 years), in the State of São Paulo, Brazil, from 1991 to 1995**. *Arq Bras Cardiol* 2000, **75**:375–379.
- Curioni C, Cunha C, Veras R, André C: **The decline in mortality from circulatory diseases in Brazil**. *Rev Panam Salud Publica* 2009, **25**:9–15.
- Bevilacqua M, Gimeno S: **Abdominal obesity in Japanese-Brazilians: which measure is best for predicting all-cause and cardiovascular mortality?** *Cad Saude Publica* 2011, **27**:1986–1996.
- Oppermann-Lisboa K, Fuchs S, Spritzer P: **Premenopause cross sectional study: sexual hormones profile, age and body mass index. A population based study**. *Gynecol Endocrinol* 1999, **13**:171 [ABSTRACT].
- Oppermann K, Fuchs S, Spritzer P: **Ovarian volume in pre- and perimenopausal women: a population-based study**. *Menopause* 2003, **10**:209–213.
- Bastos C, Oppermann K, Fuchs S, Donato G, Spritzer P: **Determinants of ovarian volume in pre-, menopausal transition, and post-menopausal women: a population-based study**. *Maturitas* 2006, **53**:405–412.
- CID-10 Classificação estatística internacional de doenças e problemas relacionados à saúde: 10a rev. [http://www.datasus.gov.br/cid10/v2008/cid10.htm]
- Moreira L, Fuchs F, Moraes R, Bredemeier M, Cardozo S, Fuchs S, Victora C: **Alcoholic beverage consumption and associated factors in Porto Alegre, a Southern Brazilian city: a population-based survey**. *J Stud Alcohol* 1996, **57**:253–259.
- Kriska A: **Modifiable activity questionnaire**. *J Am Coll Sports Med* 1995, **29**:73–78.
- Ainsworth B, Haskell W, Whitt M, Irwin M, Swartz A, Strath S, O'Brien W, Bassett DJ, Schmitz K, Emplancourt P, Jacobs DJ, Leon A: **Compendium of physical activities: an update of activity codes and MET intensities**. *Med Sci Sports Exerc* 2000, **32**:498–504.
- Colpani V, Oppermann K, Spritzer P: **Association between habitual physical activity and lower cardiovascular risk in premenopausal, perimenopausal, and postmenopausal women: a population-based study**. *Menopause* 2012: in press.
- World Health Organization: **Physical status: the use and interpretation of anthropometry. Report of the WHO Expert Committee**. In *World Health Organ Tech Rep Ser*. Geneva: World Health Organization; 1995:1–452.
- World Health Organization: **Obesity: preventing and managing the global epidemic. Report of a WHO consultation on obesity**. In *World Health Organ Tech Rep Ser*. Geneva: World Health Organization; 1998:1–234.
- Lohman T, Roche A, Martorelli R: **Anthropometric Standardization Reference Manual**. Champaign, IL: Human Kinetics Books; 1988.
- Foucan L, Hanley J, Deloumeaux J, Suissa S: **Body mass index (BMI) and waist circumference (WC) as screening tools for cardiovascular risk factors in Guadeloupean women**. *J Clin Epidemiol* 2002, **55**:990–996.
- Chobanian A, Bakris G, Black H, Cushman W, Green L, Izzo J, Jones D, Materson B, Oparil S, Wright J, Roccella E, National High Blood Pressure

- Education Program Coordinating Committee: **Seventh report of the Joint National Committee on prevention, detection, evaluation, and treatment of high blood pressure.** *JAMA* 2003, **289**:2560–2572.
33. Friedewald W, Levy R, Fredrickson D: **Estimation of the concentration of low-density lipoprotein cholesterol in plasma, without use of the preparative ultracentrifuge.** *Clin Chem* 1972, **18**:499–502.
34. Oppermann K, Fuchs SC, Spritzer PM: **Androgenous androgens, ovarian volume and cardiovascular risk factors in pre-, menopause transition and post-menopause: a longitudinal study.** In *23rd Annual Meeting - NAMS - The North American Menopause Society: 2012; Orlando, Florida, USA*. Ohio: Mayfield Heights; 2012:59–60 [ABSTRACT].
35. Carlsson C, Stein J: **Cardiovascular disease and the aging woman: overcoming barriers to lifestyle changes.** *Curr Womens Health Rep* 2002, **2**:366–372.
36. Schmitt A, Cardoso M, Aldrighi J: **Tendências da mortalidade em mulheres brasileiras no climatério.** *Rev Bras Crescimento Desenvolv Hum* 2008, **18**:11–15.
37. Huxley R, Barzi F, Woodward M: **Excess risk of fatal coronary heart disease associated with diabetes in men and women: meta-analysis of 37 prospective cohort studies.** *BMJ* 2006, **332**:332–373.
38. Barreto SM, Passos VM, Almeida SK, Assis TD: **The increase of diabetes mortality burden among Brazilian adults.** *Rev Panam Salud Publica* 2007, **22**:239–245.
39. Lee C, Joseph L, Colosimo A, Dasgupta K: **Mortality in diabetes compared with previous cardiovascular disease: a gender-specific meta-analysis.** *Diabetes Metab* 2012, **38**:420–427.
40. Kannel W: **The Framingham Study: historical insight on the impact of cardiovascular risk factors in men versus women.** *J Genet Specif Med* 2002, **5**:27–37.
41. Steingart RM, Packer M, Hamm P, Coglianese ME, Gersh B, Geltman EM, Sollano J, Katz S, Moye L, Basta LL, Lewis SJ, Gottlieb SS, Bernstein V, McEwan P, Jacobson K, Brown EJ, Kukin ML, Kantrowitz NE, Pfeffer MA, and the Survival and Ventricular Enlargement Investigators: **Sex differences in the management of coronary artery disease. Survival and Ventricular Enlargement Investigators.** *N Engl J Med* 1991, **325**:226–230.
42. Stranges S, Guallar E: **Cardiovascular disease prevention in women: a rapidly evolving scenario.** *Nutr Metab Cardiovasc Dis* 2012, **22**:1013–1018.
43. Walden CE, Knopp RH, Wahl PW, Beach KW, Strandness E Jr: **Sex differences in the effect of diabetes mellitus on lipoprotein triglyceride and cholesterol concentrations.** *N Engl J Med* 1984, **311**:953–959.
44. Siegel RD, Cupples A, Schaefer EJ, Wilson PW: **Lipoproteins, apolipoproteins, and low-density lipoprotein size among diabetics in the Framingham offspring study.** *Metabolism* 1996, **45**:1267–1272.
45. Cardillo C, Campia U, Bryant M, Panza J: **Increased activity of endogenous endothelin in patients with type II diabetes mellitus.** *Circulation* 2002, **106**:1783–1787.
46. Cosentino F, Eto M, De Paolis P, van der Loo B, Bachschmid M, Ullrich V, Kouroedov A, Delli Gatti C, Joch H, Volpe M, Lüscher T: **High glucose causes upregulation of cyclooxygenase-2 and alters prostanoid profile in human endothelial cells.** *Circulation* 2003, **107**:1017–1023.
47. Flegal K, Graubard B, Williamson D, Gail M: **Excess deaths associated with underweight, overweight, and obesity.** *JAMA* 2005, **293**:1861–1867.
48. Calle E, Thun M, Petrelli J, Rodriguez C, Heath CJ: **Body-mass index and mortality in a prospective cohort of U.S. adults.** *N Engl J Med* 1999, **341**:1097–1105.
49. Allison D, Faith M, Heo M, Kotler D: **Hypothesis concerning the U-shaped relation between body mass index and mortality.** *Am J Epidemiol* 1997, **146**:339–349.
50. Schneider HJ, Friedrich N, Klotsche J, Pieper L, Nauck M, John U, Dorr M, Felix S, Lehnert H, Pittrow D, Silber S, Volzke H, Stalla GK, Wallaschofski H, Wittchen HU: **The predictive value of different measures of obesity for incident cardiovascular events and mortality.** *J Clin Endocrinol Metab* 2010, **95**:1777–1785.
51. Hotchkiss JW, Leyland AH: **The relationship between body size and mortality in the linked Scottish Health Surveys: cross-sectional surveys with follow-up.** *Int J Obes* 2011, **35**:838–851.
52. Srikanthan P, Seeman TE, Karlamangla AS: **Waist-hip-ratio as a predictor of all-cause mortality in high-functioning older adults.** *Ann Epidemiol* 2009, **19**:724–731.
53. Mosca L, Appel L, Benjamin E, Berra K, Chandra-Strobo N, Fabunmi R, Grady D, Haan C, Hayes S, Judelson D, Keenan N, McBride P, Oparil S, Ouyang P, Oz M, Mendelsohn M, Pasternak R, Pinn V, Robertson R, Schenck-Gustafsson K, Sila C, Smith SJ, Sopko G, Taylor A, Walsh B, Wenger N, Williams C: **Evidence-based guidelines for cardiovascular disease prevention in women.** *Circulation* 2004, **109**:672–693.
54. Marjoribanks J, Farquhar C, Roberts H, Lethaby A: **Long term hormone therapy for perimenopausal and postmenopausal women.** *Cochrane Database Syst Rev* 2012, **7**, CD004143.
55. Hulley S, Grady D, Bush T, Furberg C, Herrington D, Riggs B, Vittinghoff E: **Randomized trial of estrogen plus progestin for secondary prevention of coronary heart disease in postmenopausal women. Heart and Estrogen/progestin Replacement Study (HERS) Research Group.** *JAMA* 1998, **280**:605–613.
56. Simon JA, Hsia J, Cauley JA, Richards C, Harris F, Fong J, Barrett-Connor E, Hulley SB: **Postmenopausal hormone therapy and risk of stroke: The Heart and Estrogen-progestin Replacement Study (HERS).** *Circulation* 2001, **103**:638–642.
57. Rossouw JE, Anderson GL, Prentice RL, LaCroix AZ, Kooperberg C, Stefanick ML, Jackson RD, Beresford SA, Howard BV, Johnson KC, Kotchen JM, Ockene J: **Risks and benefits of estrogen plus progestin in healthy postmenopausal women: principal results from the Women's Health Initiative randomized controlled trial.** *JAMA* 2002, **288**:321–333.
58. Stefanick ML: **Postmenopausal hormone therapy and cardiovascular disease in women.** *Nutr Metab Cardiovasc Dis* 2010, **20**:451–458.
59. de Villiers T, Gass M, Haines C, Hall J, Lobo R, Pierroz D, Rees M: **Global consensus statement on menopausal hormone therapy.** *Maturitas* 2013, **74**:391–392.
60. Lin J, Caffrey J, Chang M, Lin Y: **Sex, menopause, metabolic syndrome, and all-cause and cause-specific mortality—cohort analysis from the Third National Health and Nutrition Examination Survey.** *J Clin Endocrinol Metab* 2010, **95**:4258–4267.
61. Spritzer PM, Oppermann K: **Weight gain and abdominal obesity at menopause.** *Climacteric* 2013, **16**:292.
62. Donato G, Fuchs S, Oppermann K, Bastos C, Spritzer P: **Association between menopause status and central adiposity measured at different cutoffs of waist circumference and waist-to-hip ratio.** *Menopause* 2006, **13**:280–285.
63. Di Castelnuovo A, Costanzo S, Bagnardi V, Donati M, Iacoviello L, de Gaetano G: **Alcohol dosing and total mortality in men and women: an updated meta-analysis of 34 prospective studies.** *Arch Intern Med* 2006, **166**:2437–2445.
64. ESHRE Capri Workshop Group: **Perimenopausal risk factors and future health.** *Hum Reprod Update* 2011, **17**:706–717.
65. Hardarson T, Gardarsdóttir M, Gudmundsson KT, Thorgeirsson G, Sigvaldason H, Sigfússon N: **The relationship between educational level and mortality. The Reykjavik Study.** *J Intern Med* 2001, **249**:495–502.

doi:10.1186/1471-2458-14-194

**Cite this article as:** Colpani et al.: Causes of death and associated risk factors among climacteric women from Southern Brazil: a population based-study. *BMC Public Health* 2014 **14**:194.

**Submit your next manuscript to BioMed Central and take full advantage of:**

- Convenient online submission
- Thorough peer review
- No space constraints or color figure charges
- Immediate publication on acceptance
- Inclusion in PubMed, CAS, Scopus and Google Scholar
- Research which is freely available for redistribution

Submit your manuscript at  
www.biomedcentral.com/submit

