

RESEARCH ARTICLE

Open Access

Burden of paediatric influenza in Western Europe: a systematic review

Evgeniya N Antonova^{1*}, Catherine E Rycroft², Christopher S Ambrose¹, Terho Heikkinen³ and Nicola Principi⁴

Abstract

Background: Influenza illness in children causes significant clinical and economic burden. Although some European countries have adopted influenza immunisation policies for healthy children, the debate about paediatric influenza vaccination in most countries of the European Union is ongoing. Our aim was to summarise influenza burden (in terms of health outcomes and economic burden) in children in Western Europe via a systematic literature review.

Methods: We conducted a systematic literature search of PubMed, EMBASE, and the Cochrane Library (1970-April 2011) and extracted data on influenza burden in children (defined as aged ≤ 18 years) from 50 publications (13 reporting laboratory-confirmed influenza; 37 reporting influenza-like illness).

Results: Children with laboratory-confirmed influenza experienced hospitalisations (0.3%-20%), medical visits (1.7-2.8 visits per case), antibiotic prescriptions (7%-55%), and antipyretic or other medications for symptomatic relief (76%-99%); young children and those with severe illness had the highest rates of health care use. Influenza in children also led to absenteeism from day care, school, or work for the children, their siblings, and their parents. Average (mean or median) length of absence from school or day care associated with confirmed influenza ranged from 2.8 to 12.0 days for the children, from 1.3 to 6.0 days for their siblings, and from 1.3 to 6.3 days for their parents. Influenza negatively affected health-related quality of life in children with asthma, including symptoms and activities; this negative effect was smaller in vaccinated children than in non-vaccinated children.

Conclusions: Influenza burden in children is substantial and has a significant direct impact on the ill children and an indirect impact on their siblings and parents. The identified evidence regarding the burden of influenza may help inform both influenza antiviral use in children and paediatric immunisation policies in European countries.

Keywords: Influenza, Children, Vaccination, Europe, Burden

Background

Influenza is a highly contagious infectious disease that is responsible for between 3 and 5 million cases of severe influenza illness each year [1]. Many countries' immunisation guidelines recommend influenza vaccination of the elderly and individuals with underlying chronic medical conditions because of their increased risk of complications due to influenza [2]. However, it is often forgotten that children have the highest influenza attack rates, with annual incidence rates of up to 30% [3]. This translates into significant illness and health care resource use, particularly related to outpatient consultations and hospitalisations

[4-8]. Consequently, paediatric influenza leads to substantial economic and societal burdens [4,7,9-11].

Children not only incur significant morbidity associated with influenza but also are primary vectors of influenza transmission in the community [12-15] because they have limited pre-existing immunity, shed virus at higher viral titers and for a longer period than adults [16], are in close contact with one another in schools and other settings, and can have poor hygiene habits [17]. Dynamic transmission modelling (a tool that can compute the effect of infectious disease transmission) and several community-based studies have demonstrated that paediatric influenza vaccination, in addition to direct benefit to the vaccinated children, can also indirectly protect other members of the community [15,18-23].

* Correspondence: antonovae@medimmune.com

¹MedImmune, LLC, 1 MedImmune Way, Gaithersburg, Maryland 20878, USA
Full list of author information is available at the end of the article

Multiple countries recognise the burden of paediatric influenza and the role of children in disease transmission and recommend paediatric vaccination. The United States Advisory Committee on Immunization Practices has recommended annual vaccination of all children aged 6 months and older since 2008 [9]. Canada, Hong Kong, several Latin American countries, China, Singapore, Korea, and Taiwan also recommend paediatric vaccination, although most policies in these countries are restricted to young children (i.e., those aged ≤ 2 years or aged ≤ 5 years, depending on the country) [24-31]. Finland recommends vaccination of all children aged 6 months to 35 months and has implemented a fully-funded childhood immunisation programme since 2007. Latvia and Slovenia recommend vaccination of children aged 6 months to 2 years. Austria, Estonia, Slovakia, and Saxony in Germany recommend vaccination of children aged 6 months to 18 years [32,33]. In the United Kingdom, the Joint Commission on Vaccination and Immunisation has recently recommended that the influenza vaccination program should be extended to low risk children aged 2 to less than 17 years [34].

Although influenza burden has been studied in many countries, including some European countries [35-38], the overall burden of seasonal influenza in multiple countries in Western Europe has not been summarised in a systematic manner. Furthermore, although ample data on influenza burden are available for adults – particularly the elderly and individuals with comorbidities – such data for children are sparse. A systematic summary of influenza burden in Western Europe could help inform the paediatric immunisation policy debate [2]. Our aim was to summarise influenza burden (in terms of health outcomes and economic burden) in children in Western Europe via a systematic literature review.

Methods

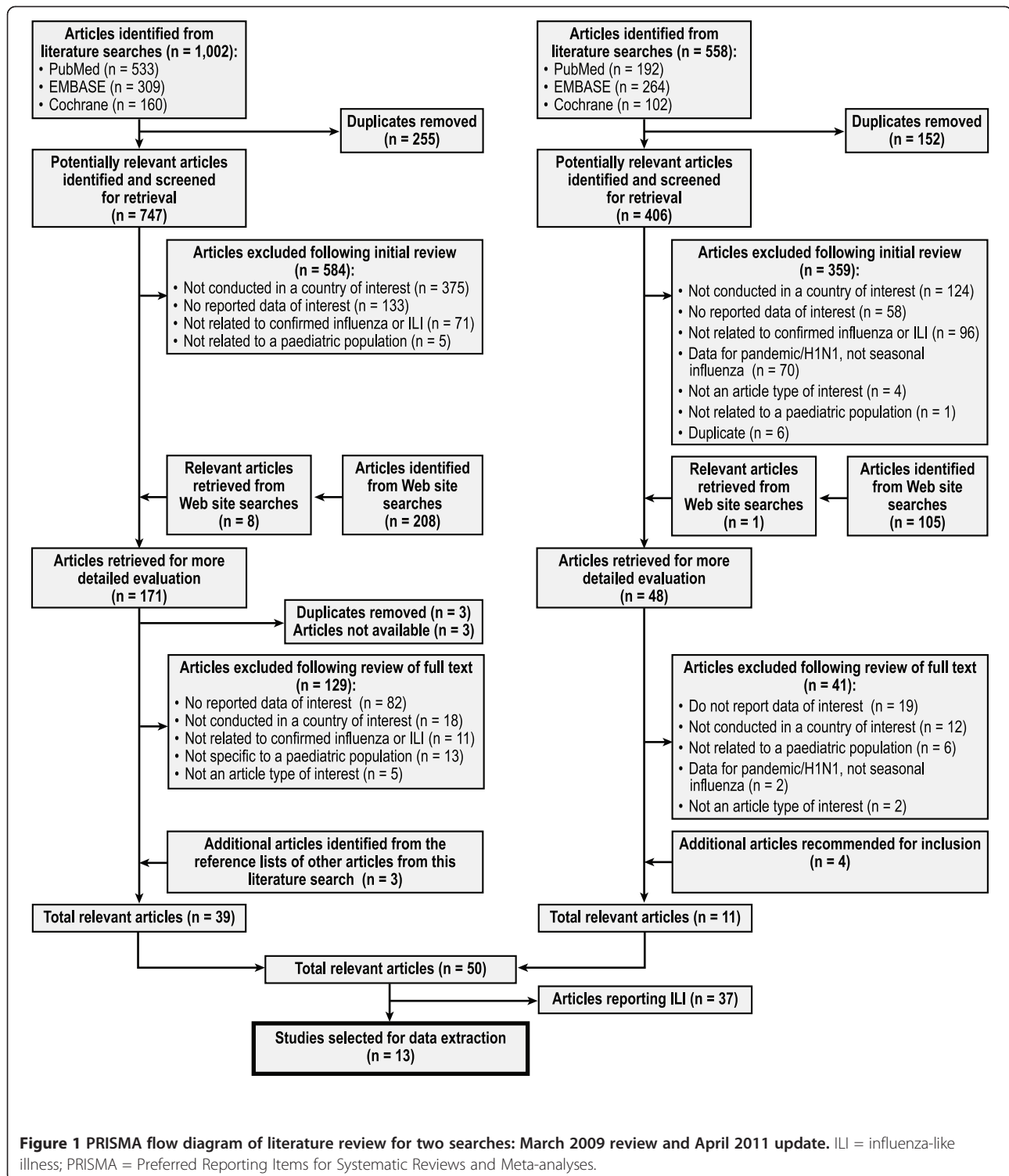
To retain a manageable volume of literature, this study included eight Western European countries: Austria, Finland, France, Germany, Italy, the Netherlands, Spain, and the United Kingdom (UK). We selected countries known for their influence on decision-making in the European Union (EU), paediatric immunisation policies, or previous epidemiologic investigations of paediatric influenza. We conducted a systematic and comprehensive search of medical literature electronically indexed in PubMed, EMBASE, and the Cochrane Library. We used a detailed search strategy and combined free-text search terms with Medical Subject Headings. The search terms were related to influenza, cost or burden analyses, health-related quality of life (HRQoL), absenteeism, and productivity (see Additional file 1: Table S1 in the Online Appendix for more details). Our search

methodology complied with Preferred Reporting Items for Systematic Reviews and Meta-analyses (PRISMA) requirements [39].

Our search included studies conducted in children (defined as aged ≤ 18 years) and published since January 1970. We retained only studies that reported data on costs, resource use, absenteeism, and/or impact on HRQoL associated with influenza specifically for children; however, data on absenteeism covered both enrolled children and their parents in some studies. We excluded publications related to the H1N1 pandemic in 2009-2010 because pandemic influenza is substantially different from seasonal influenza. We also excluded publications relating to influenza-like illness (ILI) and retained only those publications reporting laboratory-confirmed influenza, as the latter assessment method is more specific than all-cause ILI. For the purposes of this article, we refer to “seasonal influenza” as “influenza”. We limited publications by excluding any editorials, letters, meta-analyses, practice guidelines, and comments. We examined references of included articles to find additional relevant publications for the review. We also searched Web sites of the health technology assessment bodies of the eight countries of interest for relevant influenza vaccine appraisals.

Two independent reviewers (CR and one other researcher at RTI Health Solutions) screened the identified publications according to pre-defined inclusion and exclusion criteria described above. We next conducted our review in two phases. In Phase 1, the reviewers screened all the titles and abstracts and selected publications for a full-text review. In Phase 2, the reviewers examined the full text of the selected articles and determined the articles’ concordance with the study’s research aims. To control quality, both reviewers compared their results and resolved all discrepancies at each phase. We fully documented the inclusion and exclusion processes using a PRISMA flow chart that detailed the number of included and excluded articles [40] (Figure 1).

We summarised data in evidence tables by the following domains: (1) health care resource use, (2) costs (including direct medical costs, direct non-medical costs, and indirect [societal] costs), (3) HRQoL, and (4) absenteeism and loss of productivity in patients and their families. We excluded studies not specific to children. We also extracted data on the incidence of influenza and of complications of influenza (e.g., acute otitis media, pneumonia, and lower respiratory tract infections) as secondary outcomes from the articles on economic burden. We recorded the following influenza assessment methods: via laboratory methods (virology or polymerase chain reaction) or via a list of ILI symptoms. However, we report only studies of laboratory-confirmed influenza,



and the ILI studies are summarised in the supplementary appendix (see Additional file 1: Table S2 in the Online Appendix).

We assessed the quality of published studies according to the Oxford Centre for Evidence-based Medicine

Levels of Evidence [41]. Finally, we assessed each study's risk of bias, particularly focusing on the study population (community members or a particular subset of patients). An independent quality-control specialist confirmed data-extraction accuracy.

Results

The results below represent studies of laboratory-confirmed influenza. Results from studies of ILI can be found in Additional file 1: Table S2 in the Online Appendix.

Articles included

Figure 1 presents the details of the literature search and review process. From the initial literature search (conducted in 2009), we identified 747 unique, potentially relevant articles. After Phase 1 screening of titles and abstracts and searches of relevant Web sites, 171 articles were considered for more detailed evaluation. Of these, three articles were duplicates, three articles could not be sourced, and a further 129 articles were excluded at Phase 2 screening. Another three articles were identified in the reference lists of the included articles. Therefore, a total of 39 articles were eligible for inclusion.

From the literature search update (conducted in 2011), we identified a total of 406 unique, potentially relevant articles. After Phase 1 screening and searches of relevant Web sites, 48 articles were considered for detailed evaluation, and of these, we excluded 41 articles at Phase 2 screening. Another four articles were identified from prior knowledge of one of the authors; thus, 11 additional articles were eligible for inclusion. In total, 50 articles were eligible for inclusion from the two stages of the review. Of those, 13 articles reported relevant data for children with laboratory-confirmed influenza, and the remaining 37 articles reported data on ILI.

Table 1 describes the study details, quality, and the risk of bias for the 13 articles that included data based on laboratory-confirmed influenza in children. Most studies investigated the burden of confirmed influenza in children 15 years of age or younger, and children's ages varied among studies.

Study quality and types varied. The 13 articles were classified as follows: two were randomised, controlled trials that had placebo groups (therefore providing data on influenza burden); seven were prospective cohort studies with good follow-up; three were prospective cohort studies with poor follow-up; and one was an ecological study.

Clinical burden of influenza

Incidence of influenza

Studies reported influenza rates across a range of seasons and settings. Table 2 summarises influenza incidence and prevalence rates in various study settings. Annual incidence of influenza was 62 per 1,000 in full-term infants aged 1 year or younger [50]. Annual incidence of lower respiratory tract infection due to influenza was 1.1 per 100 children-years in children aged 36 months or younger [45]. During fall, winter, and spring, when infection risk is highest in European countries, influenza

incidence rates were 167 per 1,000 in children aged 13 years or younger (9 October 2000 — 20 May 2001 and 1 October 2001 — 19 May 2002 in Finland [35]) and 96 per 1,000 children younger than 14 years (1 November 2008 — 30 April 2009 in Italy [37]).

Influenza was a common culture-confirmed pathogen in children seeking health care due to ILI. In a randomised, controlled trial of children with ILI, influenza was confirmed in 25% of children aged 1 through 3 years during an active epidemic period (14 January — 9 April 2008) in Finland [42]. In children presenting to the emergency department (ED) with ILI, influenza was identified in 33% (0-11 months old) and 49% (\leq 36 months old) during a 4-week local influenza peak (weeks 3 – 6 in 2002) in France [36,43]. In Italy, influenza was identified in children presenting to the ED during 5 winter months: 15% in those younger than 15 years (1 November 2002 — 31 March 2003 [46,47]) and in 8.7% of those younger than 14 years (1 November 2001 — 31 March 2002 [38,48]). Among children hospitalised with ILI during 37 days of a local influenza epidemic (1 January — 6 February 2002), influenza was confirmed in 51.8% of those who tested negative for respiratory syncytial virus [44]. Among hospitalised children, the prevalence of influenza was highest in the toddler group (2-3 years; 68.9%), followed by infants (\leq 1 year; 42.4%), pre-school children (3-5 years; 41.2%), and school-aged children (6-15 years; 36.8%) [44].

Complications of influenza

A wide range of complications occurred due to laboratory-confirmed paediatric influenza (Figure 2) [35-38,42-44,46,47,50]. Frequently reported complications included acute otitis media (10 articles), pneumonia (7 articles), bronchitis (7 articles), and wheezing (6 articles) (Figure 2). The most commonly occurring complications were pharyngitis (range: 31% - 58%), acute otitis media (range: 0% - 40.9%), and febrile seizures or convulsions (range: 0% - 45%) (Figure 2).

Febrile seizures [43,44,47], respiratory distress [44], and croup [36,43,46,47] were reported only in ED- or hospital-based studies. Wheezing and pneumonia were less prevalent in community- or primary care-based studies than in studies conducted in ED or hospitals (Figure 2). Respiratory distress was more common in children younger than 3 years than in those younger than 15 years [44].

Economic burden

Health care resource use

Studies reported health care use primarily through hospitalisations, medical visits, and medications (antibiotic, antipyretic, or analgesic). Hospitalisation rates of children with laboratory-confirmed influenza ranged

Table 1 Reviewed articles on culture-confirmed influenza in children

Reference	Study design	Study settings Children age	Sample	Study quality ^a Study limitations/bias	Type of data
Finland					
Heikkinen et al., 2004 [35]	Prospective, observational study of respiratory infections in community-based children. Study seasons: 9 October 2000 — 20 May 2001 and 1 October 2001 — 19 May 2002. Follow-up: not specified.	Community (day care centres, family day care, and schools); ≤ 13 years.	2,231 child-seasons, 382 episodes of culture-confirmed influenza were documented	1b: prospective cohort study; Only winter months were evaluated.	Resource use, absenteeism
Heinonen et al., 2010 [42]	Randomised, double-blind, controlled trial comparing oseltamivir with placebo for clinical efficacy in children with influenza. Study seasons: 2 local influenza circulation seasons (14 January — 9 April 2008 and 7 January — 26 March 2009). Follow-up: 21 days.	Community; 1-3 years	1,185 children were recruited in the community prior to influenza seasons; among those, 409 children with fever or respiratory infection who attended the study clinic were randomised to either intervention or placebo; among those, 98 (24.7%) children had laboratory-confirmed influenza	1b: randomised, controlled trial; Not a population-based study; ^b Broad exclusion criteria prior to enrolment in the trial.	Resource use, absenteeism
France					
Ploin et al., 2003 [43]	Prospective, observational study in a paediatric ED of a university hospital. Study season: 4 weeks of local influenza epidemic peak (weeks 3-6 in 2002). Follow-up: 15 days.	Paediatric ED; ≤ 11 months.	304 infants consecutively enrolled during influenza peak 99 (33%) with confirmed influenza.	2b: prospective cohort study with poor follow-up; Not a population-based study.	Resource use, absenteeism
Ploin et al., 2007 [36]	Prospective, observational study in a paediatric ED of a university hospital. Study season: 4 weeks of local influenza epidemic peak (weeks 3-6 in 2002). Follow-up: 15 days.	Paediatric ED; < 36 months.	575 children consecutively enrolled during influenza peak 283 (49%) with confirmed influenza.	2b: prospective cohort study with poor follow-up; Not a population-based study.	Resource use, absenteeism
Sanni et al., 2004 [44]	Prospective, observational survey of hospitalised children. Study season: 37 days of local influenza epidemic (1 January — 6 February 2002). Follow-up: not specified.	Hospital; ≤ 15 years.	114 nasal swabs collected; among those – 59 (51.8%) with confirmed influenza.	1b: prospective cohort study; Not a population-based study.	Resource use.
Germany					
Ehken et al., 2005 [45]	Cost-of-illness analysis of a prospective, multi-centre, population-based epidemiological study on the impact of LRTI in children. Study period: 2 years (1 November 1999 — 31 October 2001). Follow-up: not specified.	Office-based PCP and hospitals; ≤ 36 months.	3,458 cases with LRTI, including 1,329 office based cases, 2,039 hospitalized cases, and 90 nosocomial cases.	2c: outcomes research; Not a population-based study; Limited to children with LRTI; Costs were imputed based on existing standards.	Cost (direct and indirect). ^c
Italy					
Bosis et al., 2005 [46]	Prospective, observational, single-centre study of children enrolled at an	ED; < 15 years.	All children (n = 1,505) attending the ED on Wednesdays and Sundays.	1b: prospective cohort study;	Resource use, absenteeism.

Table 1 Reviewed articles on culture-confirmed influenza in children (Continued)

	ED, comparing the impact of confirmed influenza and RSV with hMPV. Study season: 5 months (1 November 2002 — 31 March 2003). Follow-up: not specified.		Of these, 1,019 children had evidence of acute respiratory infection. Influenza was confirmed by PCR in 230 (15.3%) of total cases; among these, 7 cases were co-infected with RSV or hMPV.	Not a population-based study.	
Esposito et al., 2005 [47]	Prospective, observational, single-centre study of children admitted to an ED, comparing the impact of confirmed influenza and RSV. Study season: 5 months (1 November 2002 — 31 March 2003). Follow-up: not specified.	ED; < 15 years.	1,520 children attending ED for acute conditions other than trauma on Wednesdays and Sundays; 234 (15.4%) with confirmed influenza.	1b: prospective cohort study; Not a population-based study.	Resource use, absenteeism
Esposito et al., 2011 [37]	Prospective, observational study of children presenting to PCP with ILI Study season: 6 months (1 November 2008 — 30 April 2009) Follow-up: not specified	PCP < 14 years	PCPs continuously followed 21,986 community children 6,988 children with ILI presented to PCPs 2,143 (30.7%) children had confirmed influenza	1b: prospective cohort study with good follow-up Costs were imputed based on existing standards	Resource use, absenteeism, cost (direct and indirect)
Principi et al., 2003 [48]	Prospective, observational, multi-centre study. Study season: 6 months (1 November 2001 — 30 April 2002). Follow-up: not specified.	ED and PCP; < 14 years.	3,771 children with ILI; among those 352 (9.3%) with confirmed influenza, including 260 (8.7%) of 2,970 children seen in EDs and 92 (11.5%) of 801 children seen by PCPs	1b: prospective cohort study; Not a population-based study.	Resource use, absenteeism
The Netherlands					
Bueving et al., 2004 [49]	Randomised, double-blind, placebo-controlled trial comparing inactivated vaccine with placebo for clinical efficacy in children with asthma. Study seasons: 2 influenza seasons (1999 — 2000 and 2000 — 2001). Follow-up: not specified.	Community; 6-18 years.	696 children with asthma enrolled through PCP offices prior to influenza seasons' start.	1b: individual randomised, controlled trial; Limited to children with asthma.	HRQoL.
Van Der Zalm, et al., 2009 [50]	Prospective birth cohort study, a part of a prospective, ongoing population-based birth cohort study on determinants of wheezing illness. Study duration: October 2003 — September 2006. Follow-up: until infants reached 1 year of age.	Community; ≤ 1 year.	305 healthy full-term infants (2-3 weeks old); 668 samples positively tested for any respiratory virus; 18 (2.7%) samples with influenza virus.	2b: individual cohort study.	Resource use.

ED = emergency department; hMPV = human metapneumovirus; HRQoL = health-related quality of life; ILI = influenza-like illness; LRTI = lower respiratory tract infection; PCP = primary care paediatrician; PCR = polymerase chain reaction; RSV = respiratory syncytial virus.

^a Study quality according to the Oxford Centre for Evidence-based Medicine scale [41].

^b Studies that investigated the impact of influenza at the whole population level rather than the impact in a particular subset of patients (e.g., children admitted to hospital with fever).

^c Resource use, absenteeism, and HRQoL also reported but associated with ILI only (not associated with confirmed influenza).

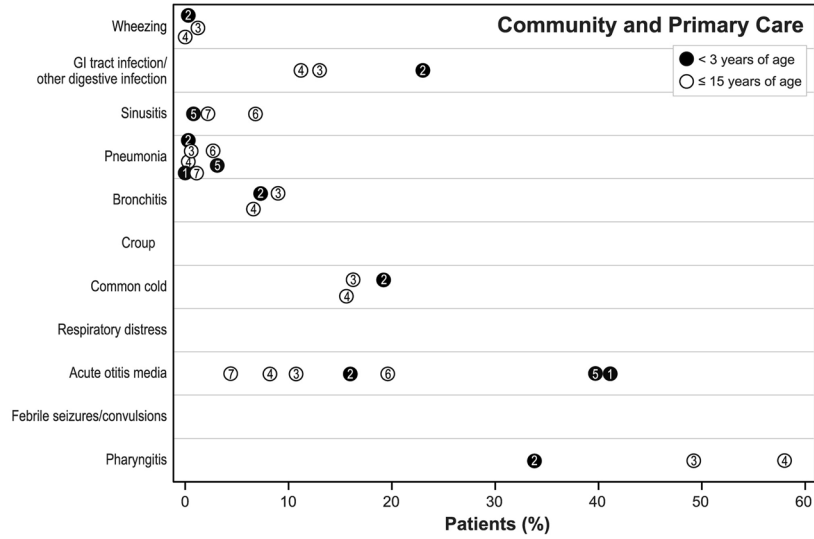
Table 2 Incidence and prevalence rates of laboratory-confirmed influenza in children

Reference	Country	Age	Setting	Study season or period	Influenza rates
Community-based estimates					
Van der Zalm, et al., 2009 [50]	The Netherlands	< 1 year	Community	October 2003 – September 2006. Follow-up: until infants reached 1 year of age.	Prevalence rate: influenza was detected in 2.7% of respiratory samples Annual incidence rate: 62 per 1,000 ^a
Heikkinen et al., 2004 [35]	Finland	≤ 13 years	Community	9 October 2000 – 20 May 2001 and 1 October 2001 – 19 May 2002.	Influenza-season incidence rate per 1,000 children: All ages combined: 167, ^b Age < 3 years: 179, Age 3-6 years: 175, Age 7-13 years: 142.
Health care setting-based estimates					
Ploin et al., 2003 [43]	France	0-11 months	Paediatric ED	4 weeks of local influenza epidemic peak (weeks 3-6 in 2002)	Prevalence rate: Total: 33%, Aged 0-2 months: 31%, Aged 3-5 months: 27%, Aged 6-8 months: 30%, Aged 9-11 months: 40%.
Ploin et al., 2007 [36]	France	< 36 months	Paediatric ED	4 weeks of local influenza epidemic peak (weeks 3-6 in 2002)	Prevalence rate: 49%
Ehken et al., 2005 [45]	Germany	0-36 months	PCP, paediatric hospital	1 November 1999 – 31 October 2001.	Annual incidence rate of LRTI associate with influenza: 1.1 per 100 children-years.
Heinonen et al., 2010 [42]	Finland	1-3 years (mean age: 2.4 years)	Primary care clinic	Two local influenza circulation seasons: 14 January – 9 April 2008 and 7 January – 26 March 2009. Follow-up: 21 days.	Prevalence rate: 24.7% of children tested positive for influenza.
Esposito et al., 2011 [37]	Italy	< 14 years	PCP (with community "base")	1 November 2008 – 30 April 2009.	Influenza-season incidence rate: 96.4 per 1,000 children.
Principi et al., 2003 [48]	Italy	< 14 years	PCP and ED	1 November 2001 – 30 April 2002.	Prevalence rate: 9.3%, (virology or PCR),
Principi et al., 2004 [38]					Including: 8.7% of children seen in EDs and 11.5% of children seen by PCPs.
Bosis et al., 2005 [46]	Italy	< 15 years	ED	1 November 2002 – 31 March 2003.	Prevalence rate: 15.3% (by PCR).
Esposito et al., 2005 [47]	Italy	< 15 years	ED	1 November 2002 – 31 March 2003.	Prevalence rate: 15.4% (by PCR).
Sanni et al., 2004 [44]	France	≤ 15 years	Hospital	37 days of local influenza epidemic (1 January – 6 February 2002)	Prevalence rate: Total: 51.8%, Aged 0-1 year: 42.4%, Aged > 1 and ≤ 3 years: 68.9%, Aged > 3 and ≤ 5 years: 41.2%, Aged > 5 and ≤ 15 years: 36.8%.

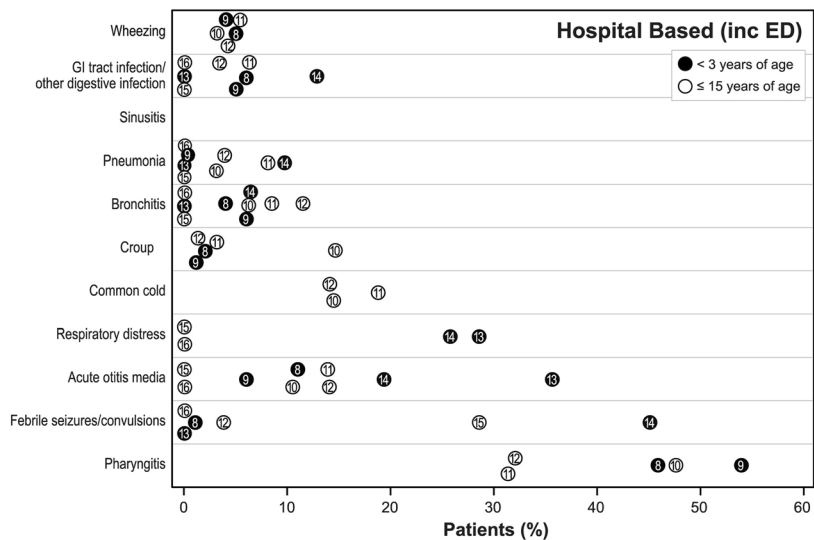
ED = emergency department; LRTI = lower respiratory tract infection; NR = not reported; PCP = primary care pediatrician; PCR = polymerase chain reaction
 Note: For further details on study design and patient characteristics, see Table 1.

^a We calculated this rate from the paper as follows: 18 [influenza cases] ÷ (305 [enrolled children, corrected for dropout] × 11.5 [average months of follow-up per child] ÷ 12 [months in a year]) × 1,000 = 62.

^b We calculated this rate from the data reported in the paper (372 [influenza cases] ÷ 2,231 [recruited children] × 1,000 = 167).



Study	Reference Number	Patient Age	Influenza Cases	Country	Setting	Study Duration
Heinonen et al., 2010	1	1 - 3 years	61	Finland	Primary care	14 January - 9 April 2008 and 7 January - 26 March 2009
	2	< 2 years	343			
Esposito et al., 2011	3	2 - 5 years	1071	Italy	Primary care	1 November 2008 - 30 April 2009
	4	6 - 13 years	729			
	5	< 3 years	133			
Heikkinen et al., 2004	6	3 - 6 years	148	Finland	Community	9 October 2000 - 20 May 2001 and 1 October 2001 - 19 May 2002
	7	7 - 13 years	91			



Study	Reference Number	Patient Age	Influenza Cases	Country	Setting	Study Duration
Ploin et al., 2003	8	0 - 11 months	99	France	ED	Weeks 3 to 6 in 2002
Ploin et al., 2007	9	< 3 years	283	France	ED	Weeks 3 to 6 in 2002
Principi et al., 2004	10	< 14 years	352	Italy	Primary care and ED	1 November 2001 - 30 April 2002
Bosis et al., 2005	11	< 15 years	223	Italy	ED	1 November 2002 - 31 March 2003
Esposito et al., 2005	12	< 15 years	234	Italy	ED	1 November 2002 - 31 March 2003
	13	< 1 year	14			
Sanni et al., 2004	14	> 1 and <= 3 years	31	France	Hospital	1 January - 6 February 2002
	15	> 3 and <= 5 years	7			
	16	> 5 and <= 15 years	7			

Figure 2 (See legend on next page.)

(See figure on previous page.)

Figure 2 Incidence of complications in children with laboratory-confirmed influenza. ED = emergency department; GI = gastrointestinal. Notes: Confidence intervals were not presented for any of these values within any of the source articles. We calculated the rate of acute otitis media for the placebo group from the Heinonen et al. [42] article as follows: $(6 \text{ [the number of patients with acute otitis media at baseline]} + 19 \text{ [the number of the number of patients with new episodes of acute otitis media during the study]}) \div 61 \text{ [the total number of patients in the placebo group]} = 40.9\%$.

from 0% to 20% (Figure 3), and the mean length of stay ranged from 1.8 to 7.9 days (Figure 4). As would be expected, hospitalisation rates reported in physician office-based studies (0.7% [37]) and community studies (0.3% [35]) were lower than in ED-based studies (20% [43], 10% [36], 5.6% [47]) due to more severe influenza illness in children presenting to the ED than in those treated at a physician's office. Two studies with identical country, influenza season, and health care settings demonstrated that infants (aged 0-11 months) presenting to the ED were more likely to be hospitalised (20%) and stayed in the hospital longer (mean: 7.9 days) [43] than children 0 through 3 years of age (10%; mean: 1.8 days) [36].

Infants and toddlers had a higher number of medical visits than children who were older (Figure 4). For

example, in community-based studies, hospitalisation rates were 1.5% (for children < 2 years), 0.7% (2-5 years), and 0.4% (6-13 years) in Italy [37] and 0.8% (< 3 years), 0% (3-6 years), and 0% (7-13 years) in Finland [35]. A similar trend was observed in ED-based studies: children younger than 14 years had, on average, 1.7 medical visits [38]; by comparison, toddlers (< 3 years) had an average of 2.1 visits [36] and infants (< 1 year) had an average of 2.8 visits [43].

Medication use was high in children with influenza and varied by the study setting. Antibiotics were prescribed to 28% of children in community-based studies [35]; to 43% of children in primary care-based studies [37]; to 52% [50], 42% [36,43], or 55% [38] in the ED studies; and to 34% in hospital-based studies [44] (see Additional file 1: Table S3 in the Online Appendix).

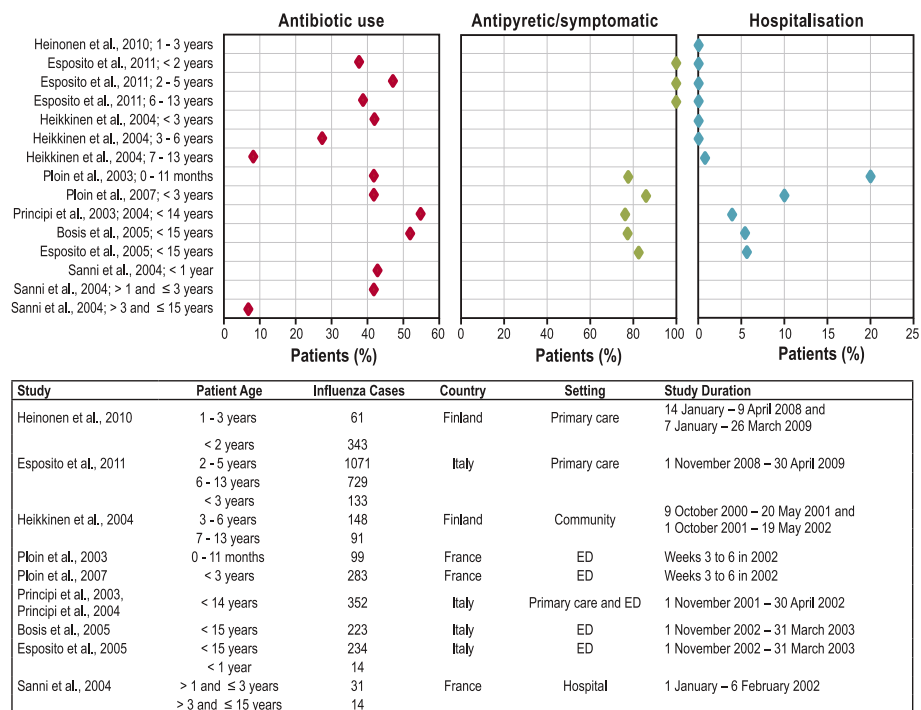


Figure 3 Hospitalisations, antibiotic use, and antipyretic or symptomatic treatment use by children with culture-confirmed influenza. ED = emergency department. Notes: Each point represents a percentage value reported in one of the identified studies. Confidence intervals were not presented for any of these values within any of the source articles.

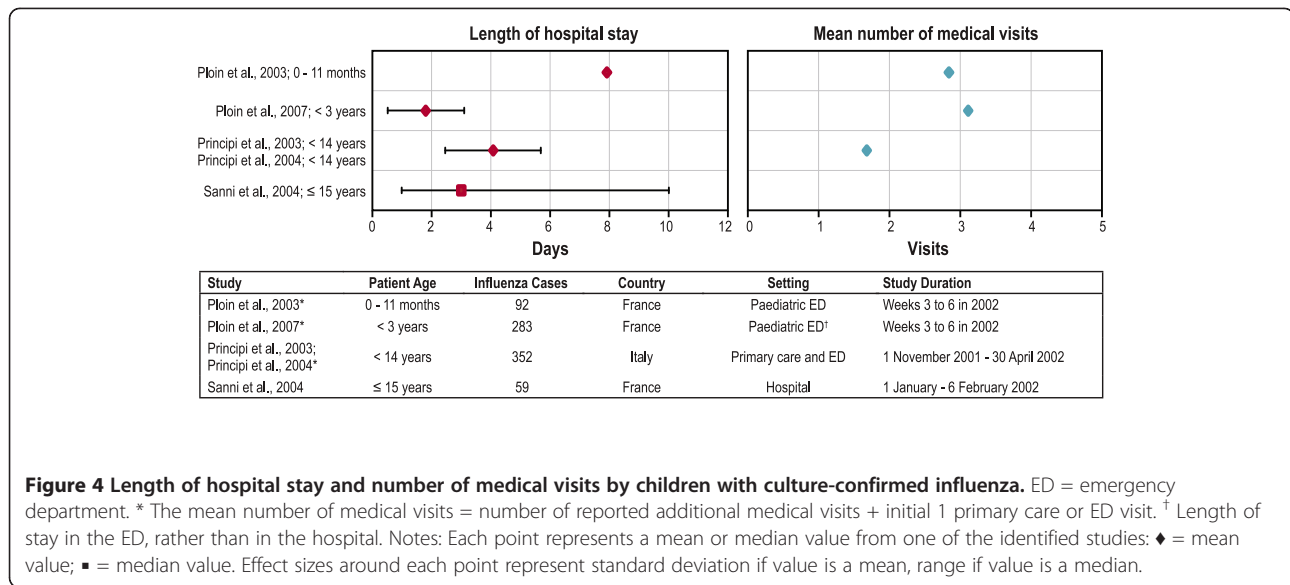


Figure 4 Length of hospital stay and number of medical visits by children with culture-confirmed influenza. ED = emergency department. * The mean number of medical visits = number of reported additional medical visits + initial 1 primary care or ED visit. [†] Length of stay in the ED, rather than in the hospital. Notes: Each point represents a mean or median value from one of the identified studies: ◆ = mean value; ■ = median value. Effect sizes around each point represent standard deviation if value is a mean, range if value is a median.

Furthermore, antibiotic use varied by age: infants and toddlers were more likely to receive antibiotics than older children. In a community-based study, the age trend of receipt of antibiotics was obvious: 42% (in children < 3 years), 28% (3-6 years), and 8% (7-13 years) [35]. The trend was similar, but less pronounced, in a primary care study (38% [< 2 years], 47% [2-5 years], and 38% [6-13 years] [37]) and in a hospital-based study (43% [< 1 year], 41% [1-3 years], and 7.1% [> 3years] [44]) (Figure 3). Most children with laboratory-confirmed influenza (76% - 99%) received antipyretics and other symptomatic treatment, with no obvious age-related trend (Figure 3).

Family members of children with influenza also consumed health care resources due to subsequent ILI (Additional file 1: Table S3 in the Online Appendix). For 10% to 43% of children with confirmed influenza, a similar illness was observed in a household member [37,38,46,47]. Between 0.3% and 0.4% of family members required hospitalisation [38,46-48], 5% to 8% received a prescription for antibiotics [38,46,47], 13% to 16% received antipyretics [38,46,47], and 10% to 14% required medical visits [46,47] (Additional file 1: Table S3 in the Online Appendix).

Costs

Multiple studies reported medical and societal costs associated with paediatric influenza, but only two reported results based on laboratory-confirmed illness (Table 3) [37,45]. In the first study, the annual total cost of paediatric community-acquired influenza in Germany was estimated at €7,530,105. This study considered children between 0 and 36 months of age with lower respiratory tract infection and estimated 2,913 influenza cases per year, with a median

hospitalisation cost of €2,585 per case. Hospitalised paediatric influenza cases were more expensive than the office-based ones (€2,597 vs. €223, year 2002 costs [45]).

The second study was conducted in Italy and considered both direct (medical) and indirect (absenteeism) costs. The care for children with laboratory-confirmed influenza (averaging €132 per patient) was 32% more expensive than that for children with influenza-negative ILI [37]. An influenza hospitalisation cost approximately €3,000, and associated costs averaged €22.40 among all influenza cases (the total cost of hospitalization divided by the total number of children with influenza, regardless of their hospitalization status). The average indirect cost of working days lost by parents (€70) had the greatest impact on the average total cost of an influenza case. Furthermore, the cost of care for young children was greater than the cost of care for older children: €153 for children younger than 2 years, €148 for children aged 2 to 5 years, and €74 for children aged 5 to 13 years.

Absenteeism

Childhood influenza resulted in absenteeism for sick children, their siblings, and parents (Additional file 1: Table S3 in the Online Appendix and Figure 5). Absenteeism in ill children was assessed through absence from school or day care [35,38,42,46-48] or lost work or school days for the parents or siblings of infected children [35-38,42,43,46-48]. The rates of child absenteeism in the community-based study were 76% (in children < 3 years), 73% (3-6 years), and 77% (7-13 years) [35]; absenteeism was not assessed in other studies. The duration of absenteeism depended on influenza severity (Additional file 1: Table S3 in the Online Appendix). For example, children in ED-based studies were absent from

Table 3 Costs associated with paediatric influenza

Reference, country, and study period	Population	Costs
Ehken et al, 2005 [45], Germany, Influenza season: 1999 — 2001.	3,458 children aged 0-36 months, with LRTI. Setting: 11 office-based paediatricians and 5 hospitals.	<p>Mean (SD) costs (in 2002 euros) per community-acquired, office-based case of confirmed influenza:</p> <p>Total cost: €223 (€280) Direct medical cost: €66 (€24) Direct non-medical cost: €12 (€10) Indirect cost: €145 (€266)</p> <p>Mean (SD) costs (in 2002 euros) per community-acquired, hospitalised case of confirmed influenza:</p> <p>Total cost: €2,597 (€1,214) Direct medical cost: €2,428 (€1,200) Direct non-medical cost: €58 (€75) Indirect cost: €110 (€249)</p> <p>Median (95% CI) annual economic burden (in 2002 euros) due to confirmed influenza:</p> <p>Community-acquired office-based cases: NA Community-acquired, hospitalised cases: Median: €7,530,105 (€5,547,410-€10,011,705) Nosocomial cases: NA</p>
Esposito et al, 2011 [37], Italy, Influenza season: November 2008 — April 2009.	6,988 children aged < 14 years with ILI. Confirmed influenza cases: 2,143 (30.7%). Setting: ED at a university hospital.	<p>Mean (SD) costs (in 2008 euros) of influenza in influenza-positive and influenza-negative children and their households, until resolution of illness:</p> <p>Total: €131.70 (€71.40); €89.40 (€65.20); $P < 0.001$</p> <p>Paediatric examinations: €33.00 (€4.00); €30.60 (€4.20) Antibiotics: €3.70 (€4.30); €4.40 (€4.90) Antipyretics: €2.40 (€2.00); €1.90 (€1.40) Hospitalisation: €22.40 (€238.10); €22.50 (€251.00) Working days lost by mothers: €47.90 (€90.10); €26.70 (€89.90); $P < 0.05$ Working days lost by fathers: €22.30 (€89.70); €3.30 (€39.90); $P < 0.05$</p> <p>Mean (SD) costs of influenza in influenza-positive children with influenza A or influenza B and their households, until resolution of illness:</p> <p>Total: €142.60 (€74.30); €72.80 (€53.30); $P < 0.001$</p> <p>Paediatric examinations: €33.30 (€4.60); €30.90 (€3.40) Antibiotics: €3.70 (€3.30); €3.40 (€3.10) Antipyretics: €2.50 (€2.10); €2.00 (€1.90) Hospitalisation: €22.40 (€243.40); €14.20 (€216.70) Working days lost by mothers: €54.40 (€94.80); €16.60 (€61.40); $P < 0.05$ Working days lost by fathers: €26.30 (€97.70); €5.70 (€33.30); $P < 0.05$</p> <p>Mean (SD) cost of influenza in influenza-positive children of different age groups (<2 years, 2-5 years, and 6-13 years) and their households, until resolution of illness:</p> <p>Total: €153.20 (€72.80)^a; €148.10 (€83.10)^a; €73.90 (€41.90) Paediatric examinations: €33.50 (€5.60); €32.90 (€4.20); €33.00 (€2.50)</p>

Table 3 Costs associated with paediatric influenza (Continued)

Antibiotics: €3.20 (€3.90); €4.00 (€4.60); €3.30 (€3.90)
Antipyretics: €2.40 (€1.90); €2.30 (€2.20); €2.10 (€2.50)
Hospitalisation: €40.80 (€238.80); €23.90 (€268.90); €11.50 (€153.40)
Working days lost by mothers: €46.70 (€96.40) ^a ; €55.60 (€106.70) ^a ; €19.80 (€49.60)
Working days lost by fathers: €26.60 (€90.40) ^a ; €29.40 (€111.40) ^a ; €4.20 (€39.10)

CI = confidence interval; ED = emergency department; ILI = influenza-like illness; LRTI = lower respiratory tract infection; NA = not applicable; SD = standard deviation.

Note: For further details on study design and patient characteristics, see Table 1

^a $P < 0.05$ vs. age > 5 years.

school for a median of 12.0 days [46,47] and 5.1 days [38], children in physician office-based studies were absent from school for a median of 4.0 days [42], and children in community-based studies were absent from school for a mean of 3.6 days (calculated as weighted mean from Heikkinen et al. [35]). One study reported that some children missed up to 15 school days [46].

Parental absenteeism was common: between 11.2% and 61% of parents of children with laboratory-confirmed influenza took absence from work for their own influenza illness or to care for their children (Additional file 1: Table S3 in the Online Appendix). In Finland, parents were slightly more likely to take time off if their children were younger (61% [for children < 3 years], 54% [3-6 years], and 26% [7-13 years] [35]). However, the results were mixed in an Italian study (37.9% [for children < 2 years], 51.8% [2-5 years], and 32.5% [6-13 years] among mothers and 5.5% [for children < 2 years], 6.9% [2-5 years], and 2.5% [6-13 years] among fathers [37]) and two French studies (53% [for children 0-11 months] and 54% [for children < 36 months] [36,43]). The mean duration of work absenteeism for parents ranged from 1.3 to 6.3 days [35-38], and the median work absenteeism for parents ranged from 2 to 4 days [42,46,47].

Siblings of children with influenza also missed school days due to subsequent ILI. For example, siblings of children with influenza lost a mean of 1.3 days [38,48] or a median of 5.0 to 6.0 days [46, 47] of school or work.

Health-related quality of life

A single study reported HRQoL associated with confirmed influenza specifically in children [49]. That study (a prospective, randomised, double-blind, placebo-controlled trial) compared trivalent-inactivated vaccine with no vaccine. It assessed HRQoL in children with asthma through the Paediatric Asthma Quality of Life Questionnaire (range of possible scores: 1-7, with 7 indicating the highest HRQoL) [49]. Both the vaccinated and the placebo groups experienced worsening of asthma-related HRQoL. However, the worsening was

less severe in children in the vaccinated group than in children in the placebo group, as measured by the total score (-0.40 vs. -1.0 points; P value = 0.02), the “activities” domain (-0.49 vs. -1.31 points; P value = 0.02), the “emotions” domain (-0.21 vs. -0.41 points; P value = 0.29), and the “symptoms” domain (-0.52 vs. -1.35 points; P value = 0.04). No other studies were identified that reported the quality-of-life impact of confirmed influenza specifically in children.

Data availability by country

Data availability varied by country. Studies reporting burden of laboratory-confirmed influenza were conducted in Italy (5 articles), France (3 articles), Finland (2 articles), the Netherlands (2 articles), and Germany (1 article). No articles that reported burden data relating to confirmed influenza were identified from Austria, Spain, or the UK.

Data on health care resource use were most commonly reported in Italy and France, whereas costs of laboratory-confirmed influenza were reported for Germany and Italy. Absenteeism data were most commonly reported for Italy, whereas HRQoL impact of confirmed influenza was reported only in the Netherlands.

Discussion

The current literature review provides a comprehensive summary of the available influenza burden data in children from selected Western European countries. The incidence and prevalence rates of ILI and laboratory-confirmed influenza, as well as the rates of complications summarised by our review, were similar to those reported in the United States and Asia [51-53]. The current analysis demonstrated that, along with substantial clinical burden, influenza results in a significant economic burden, including hospital stays, physician office visits, and use of antibiotics and antipyretics. Consistent with other literature, our study found that influenza also resulted in significant illness-related absenteeism among the enrolled children and their siblings and parents. These results concurred with a 2008 review of the

literature from North America, Western Europe, Asia, and Australia: in studies from these countries, parental absenteeism ranged between 1.0 day and 5.9 days per influenza episode due to either a parent's own illness or the child's illness [54].

As expected, influenza burden depended on the severity of child's illness (as reflected by the health care settings) and the child's age. Children admitted to an ED or a hospital, in general, had more complications (wheezing, pneumonia, croup, respiratory distress, and febrile seizures or convulsions), were absent from school or day care for more days, and were more likely to receive an antibiotic prescription than their counterparts without these characteristics. Studies reporting health outcomes by children's ages demonstrated that younger children were more likely to experience respiratory distress, child and parent absenteeism, hospitalisation, and antibiotic use than older children.

The small number of studies made cross-country comparisons difficult. It is challenging to draw fair cross-country comparisons between studies, because several other factors contributed to the studies' variations in the

results: age, health care setting, and influenza season. Differences in the paediatric health care systems across the EU also may contribute to difficulties in comparing and interpreting burden-of-disease information from different countries. For example, the UK, the Netherlands, and Finland have a general practitioner-led system; Spain has a paediatrician-led system; Italy, France, Germany, and Austria have a combination of the two in which school-age children can choose to see either a general practitioner or a paediatrician [55]. These differences in the health care systems may lead to differences in health care-seeking behaviours and ultimately to variance in influenza-reporting patterns [56].

The published literature had a number of limitations, primarily related to the design of the reported studies. Heterogeneity existed among influenza seasons, ages of studied children, and study methods for evaluating influenza illness. Additionally, all cost estimates were not directly collected but imputed (the rate of health care resource use multiplied by the reimbursement or standard prices associated with these resources) [37,45].

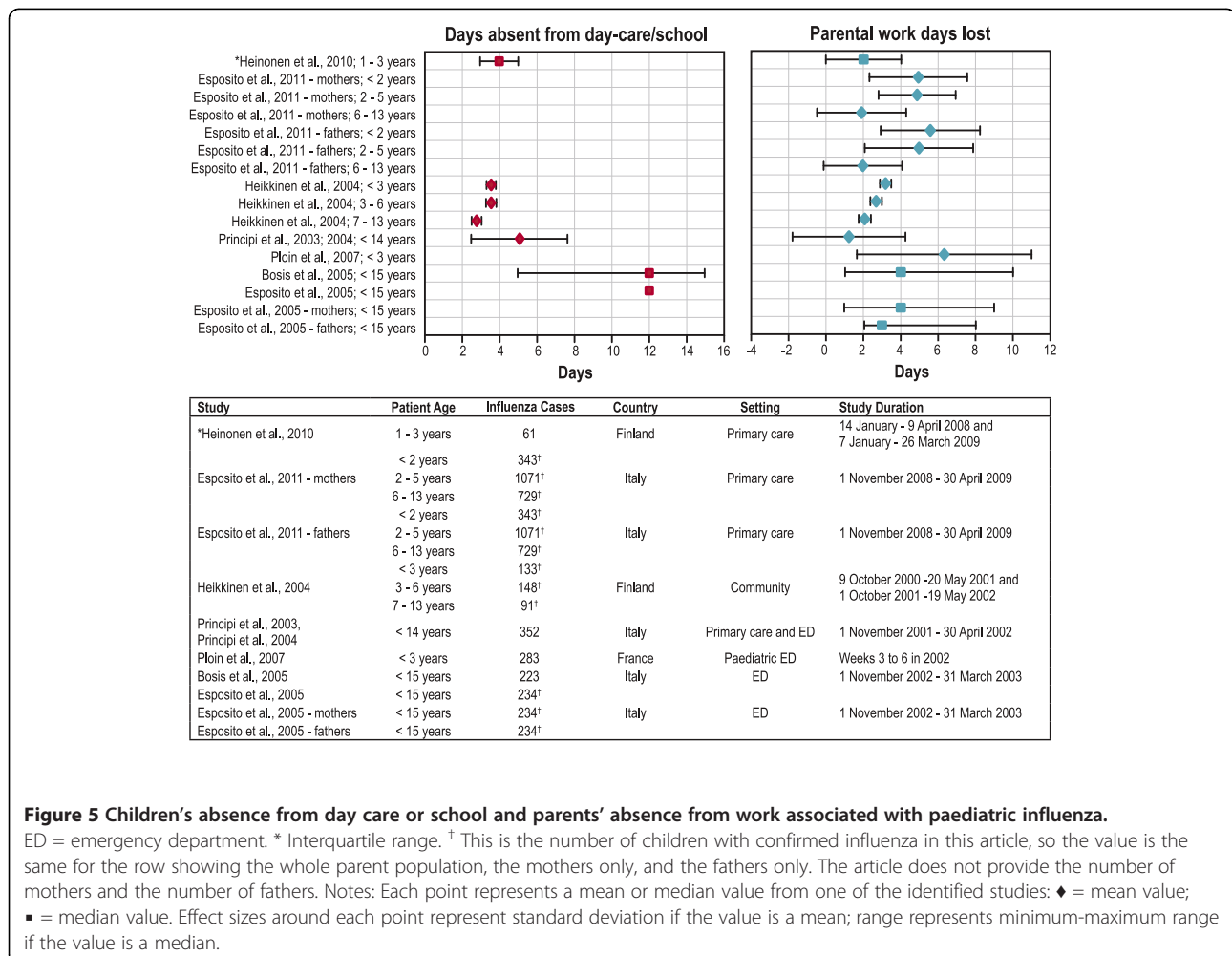


Figure 5 Children's absence from day care or school and parents' absence from work associated with paediatric influenza.

ED = emergency department. * Interquartile range. † This is the number of children with confirmed influenza in this article, so the value is the same for the row showing the whole parent population, the mothers only, and the fathers only. The article does not provide the number of mothers and the number of fathers. Notes: Each point represents a mean or median value from one of the identified studies: ♦ = mean value; ■ = median value. Effect sizes around each point represent standard deviation if the value is a mean; range represents minimum-maximum range if the value is a median.

The findings of this review should be interpreted in the context of the limitations of the search criteria. We extracted data on complications and influenza incidence rates as secondary outcomes; we did not design a literature search to identify these data specifically. Furthermore, our study investigated eight selected countries rather than all EU countries.

The demonstrated burden of influenza in children underscores the need for a comprehensive approach to controlling its impact. Increased use of diagnostic tests for influenza would increase practitioners' awareness of influenza and facilitate further epidemiologic research. Increased testing would also facilitate the use of influenza antiviral medications for treatment of influenza illness [42]. The demonstrated burden also highlights the potential benefits of the annual vaccination of children against influenza. Influenza immunisation policies in the EU vary. Although most countries recommend vaccinating elderly and high-risk individuals, only a minority of European countries recommend vaccinating the paediatric population (Austria, Estonia, Finland, Slovakia, Latvia, Slovenia, Saxony in Germany, and recently the UK) [31-34]. In light of the ongoing discussions about paediatric influenza vaccination by EU policy agencies [57], there is a need for a good understanding of the available evidence regarding the burden of influenza in European children.

Conclusion

As indicated by several bodies, including the World Health Organization and the European Centre for Disease Prevention and Control, a better understanding of the burden of influenza is essential in informing influenza-related policy making [58-60]. Although there are certainly gaps in the existing data regarding the burden of influenza in children, the existing evidence demonstrates the significant burden influenza places each year on children and their families. Summaries of the available data may help facilitate decision-making in regard to both influenza antiviral use in children and childhood immunisation policies in EU countries [31,32].

Additional file

Additional file 1: Online appendix. Table S1. Search Terms for PubMed, EMBASE, and the Cochrane Library Databases. **Table S2.** Studies reporting data not specific to culture-confirmed influenza. **Table S3.** Health care resource use and absenteeism in children with confirmed influenza.

Competing interests

This study was sponsored by MedImmune, LLC, Gaithersburg, Maryland, USA. Dr Rycroft is a full-time employee of RTI Health Solutions. Dr Antonova and Dr Ambrose are full-time employees of MedImmune, LLC. Dr Principi has received funding through his institution to conduct studies for MedImmune, LLC, and has received advisory board fees from MedImmune, LLC. Dr Heikkinen has served as a consultant for MedImmune, LLC.

Authors' contributions

CR led the literature searches, extracted the evidence from the source articles, and prepared the draft of the manuscript. EA contributed to the methodology and critical evaluation of the results and led writing, editing, and approval of the manuscript. TH, NP, and CA contributed to the critical interpretation of the results and provided feedback on the manuscript throughout its development. All authors read and approved the final manuscript.

Acknowledgements

We thank Matthew Rousculp, PhD, MPH, and Scott Moren, PharmD, MBA, for their thoughtful comments on the manuscript and continuous support of the project. We also thank Hediyyih Narula and Ann Colosia of RTI Health Solutions for reviewing articles for the initial review and updated review, respectively.

Funding

This study was provided by MedImmune LLC, Gaithersburg, Maryland, USA, an influenza vaccine manufacturer.

Author details

¹MedImmune, LLC, 1 MedImmune Way, Gaithersburg, Maryland 20878, USA. ²RTI Health Solutions, 2nd Floor, The Pavilion, Towers Business Park, Wilmslow Road Didsbury, Manchester M20 2LS, United Kingdom. ³Department of Paediatrics, University of Turku and Turku University Hospital, FI-20520, Turku, Finland. ⁴Department of Physiopathology and Transplantation, University of Milan, Fondazione IRCCS Ca' Granda, Ospedale Maggiore Policlinico, I-20122, Milan, Italy.

Received: 2 March 2012 Accepted: 17 October 2012

Published: 12 November 2012

References

1. World Health Organization: *Influenza (Seasonal)*; 2009. <http://www.who.int/mediacentre/factsheets/fs211/en/index.html>.
2. Heikkinen T, Booy R, Campins M, Finn A, Olcén P, Peltola H, Rodrigo C, Schmitt HJ, Schumacher F, Teo S, Weil-Olivier C: **Should healthy children be vaccinated against influenza? A consensus report of the Summits of Independent European Vaccination Experts.** *Eur J Pediatr* 2006, **165**:223-228.
3. Usonis V, Anca I, André F, Chlibek R, Ivaskeviciene I, Mangarov A, Mészner Z, Prymula R, Simurka P, Tamm E, Tesović G, Central European Vaccination Advisory Group: **Central European Vaccination Advisory Group (CEVAG) guidance statement on recommendations for influenza vaccination in children.** *BMC Infect Dis* 2010, **10**:168.
4. Molinari NA, Ortega-Sanchez IR, Messonnier ML, Thompson WW, Wortley PM, Weintraub E, Bridges CB: **The annual impact of seasonal influenza in the US: measuring disease burden and costs.** *Vaccine* 2007, **25**:5086-5096.
5. Neuzil KM, Mellen BG, Wright PF, Mitchel EF Jr, Griffin MR: **The effect of influenza on hospitalizations, outpatient visits, and courses of antibiotics in children.** *N Engl J Med* 2000, **342**:225-231.
6. Neuzil KM, Hohlbein C, Zhu Y: **Illness among schoolchildren during influenza season: effect on school absenteeism, parental absenteeism from work, and secondary illness in families.** *Arch Pediatr Adolesc Med* 2002, **156**:986-991.
7. Thompson WW, Shay DK, Weintraub E, Brammer L, Bridges CB, Cox NJ, Fukuda K: **Influenza-associated hospitalizations in the United States.** *JAMA* 2004, **292**:1333-1340.
8. Tamma PD, Turnbull AE, Milstone AM, Cosgrove SE, Valsamakis A, Budd A, Perl TM: **Clinical outcomes of seasonal influenza and pandemic influenza A (H1N1) in pediatric inpatients.** *BMC Pediatr* 2010, **10**:72.
9. Fiore AE, Shay DK, Broder K, Iskander JK, Uyeki TM, Mootrey G, Bresee JS, Cox NS, Centers for Disease Control and Prevention (CDC); Advisory Committee on Immunization Practices (ACIP): **Prevention and control of influenza: recommendations of the Advisory Committee on Immunization Practices (ACIP) 2008.** *MMWR Recomm Rep* 2008, **57**:1-60.
10. Thompson WW, Shay DK, Weintraub E, Brammer L, Cox N, Anderson LJ, Fukuda K: **Mortality associated with influenza and respiratory syncytial virus in the United States.** *JAMA* 2003, **289**:179-186.
11. Fairbrother G, Cassidy A, Ortega-Sanchez IR, Szilagyi PG, Edwards KM, Molinari NA, Donauer S, Henderson D, Ambrose S, Kent D, Poehling K, Weinberg GA, Griffin MR, Hall CB, Finelli L, Bridges C, Staat MA, New Vaccine

- Surveillance Network (NVSN): **High costs of influenza: direct medical costs of influenza disease in young children.** *Vaccine* 2010, **28**:4913–4919.
12. Savidan E, Chevat C, Marsh G: **Economic evidence of influenza vaccination in children.** *Health Pol* 2008, **86**:142–152.
 13. Lopalco PL, Giesecke J: *Technical Report of the Scientific Panel on Vaccines and Immunisation: infant and children seasonal immunisation against influenza on a routine basis during inter-pandemic period.* http://www.ecdc.europa.eu/en/publications/Publications/0701_TER_Scientific_Panel_on_Vaccines_and_Immunisation.pdf.
 14. Salo H, Kilpi T, Sintonen H, Linna M, Peltola V, Heikkinen T: **Cost-effectiveness of influenza vaccination of healthy children.** *Vaccine* 2006, **24**(23):4934–4941.
 15. Loeb M, Russell ML, Moss L, Fonseca K, Fox J, Earn DJ, Aoki F, Horsman G, Van Caeselele P, Chokani K, Vooght M, Babiuk L, Webby R, Walter SD: **Effect of influenza vaccination of children on infection rates in Hutterite communities: a randomized trial.** *JAMA* 2010, **303**:943–950.
 16. Frank AL, Taber LH, Wells CR, Wells JM, Glezen WP, Paredes A: **Patterns of shedding of myxoviruses and paramyxoviruses in children.** *J Infect Dis* 1981, **144**:433–441.
 17. Glezen WP: **Herd protection against influenza.** *J Clin Virol* 2006, **37**:237–243.
 18. Vynnycky E, Pitman R, Siddiqui R, Gay N, Edmunds WJ: **Estimating the impact of childhood influenza vaccination programmes in England and Wales.** *Vaccine* 2008, **26**:5321–5330.
 19. Basta NE, Chao DL, Halloran ME, Matrajt L, Longini IM Jr: **Strategies for pandemic and seasonal influenza vaccination of school children in the United States.** *Am J Epidemiol* 2009, **170**:679–686.
 20. Pitman RJ, White LJ, Sculpher M: **Estimating the clinical impact of introducing paediatric influenza vaccination in England and Wales.** *Vaccine* 2011, doi:10.1016/j.vaccine.2011.11.106.
 21. Glezen WP, Gaglani MJ, Kozinetz CA, Piedra PA: **Direct and indirect effectiveness of influenza vaccination delivered to children at school preceding an epidemic caused by 3 new influenza virus variants.** *J Infect Dis* 2010, **202**(11):1626–1633.
 22. Reichert TA, Sugaya N, Fedson DS, Glezen WP, Simonsen L, Tashiro M: **The Japanese experience with vaccinating schoolchildren against influenza.** *N Engl J Med* 2001, **344**(12):889–896.
 23. King JC Jr, Stoddard JJ, Gaglani MJ, Moore KA, Magder L, McClure E, Rubin JD, Englund JA, Neuzil K: **Effectiveness of school-based influenza vaccination.** *N Engl J Med* 2006, **355**(24):2523–2532.
 24. United Nations Children's Fund and the World Health Organization: *Immunization Summary: a Statistical Reference Containing Data Through 2008.* http://www.childinfo.org/files/Immunization_Summary_2008_r6.pdf.
 25. Ramez J, Weil-Olivier C, Sedlak W: **Influenza vaccination: the paediatric perspective.** *Vaccine* 2007, **25**:780–787.
 26. Ropero-Álvarez AM, Kurtis HJ, Danovaro-Holliday MC, Ruiz-Matus C, Andrus JK: **Expansion of seasonal influenza vaccination in the Americas.** *BMC Publ Health* 2009, **9**:361. doi:10.1186/1471-2458-9-361.
 27. Ng S, Wu P, Nishiura H, Ip DK, Lee ES, Cowling BJ: **An analysis of national target groups for monovalent 2009 pandemic influenza vaccine and trivalent seasonal influenza vaccines in 2009-10 and 2010-11.** *BMC Infect Dis* 2011, **11**:230.
 28. Centre for Health Protection, Scientific Committee on Vaccine Preventable Diseases: *Recommendations on Seasonal Influenza Vaccination for the 2009/10 Season.* http://www.chp.gov.hk/files/pdf/SCVPD_09_flu_vaccine_recommendation.pdf.
 29. Korea Centers for Disease Control and Prevention: *Vaccination schedule 2009.* http://www.cdc.go.kr/kcdchome/jsp/home/health/vac/HEALVAC0001Detail.jsp?menuid=100182&contentid=4020&boardid=null&appid=kcdchome&pageNum=3&sub=4&tabinx=2&q_had01=A&q_had02=2010&loadType=null&boardseq=null&q_s_1=&q_s_2=&q_s_3.
 30. Center for Disease Control, Taiwan (CDC Taiwan): *Current Immunization Schedule in Taiwan.* <http://www.cdc.gov.tw/public/Data/911241112671.pdf>.
 31. de Lataillade C, Auvergne S, Delannoy I: **2005 and 2006 seasonal influenza vaccination coverage rates in 10 countries in Africa, Asia Pacific, Europe, Latin America and the Middle East.** *J Public Health Policy* 2009, **30**:83–101.
 32. Mereckiene J, Cotter S, Nicoll A, Levy-Bruhl D, Ferro A, Tridente G, Zanoni G, Berra P, Salmaso S, O'Flanagan DO, Flanagan D, for the VENICE Project Gatekeepers Group: **National seasonal influenza vaccination survey in Europe, 2008.** *Eur Surveill* 2008, **13**:pii, 19017.
 33. *Immunisation Calendar for Children, Adolescents and Adults in the Free State of Saxony.* http://www.lua.sachsen.de/hm/impf/Docs/Synopsis_2011.pdf.
 34. Joint Commission on Vaccination and Immunization: *JCVI statement on the annual influenza vaccination programme—extension of the programme to children.* <https://www.wp.dh.gov.uk/transparency/files/2012/07/JCVI-statement-on-the-annual-influenza-vaccination-programme-25-July-2012.pdf>.
 35. Heikkinen T, Silvennoinen H, Peltola V, Ziegler T, Vainionpää R, Vuorinen T, Kainulainen L, Puhakka T, Jartti T, Toikka P, Lehtinen P, Routi T, Juven T: **Burden of influenza in children in the community.** *J Infect Dis* 2004, **190**:1369–1373.
 36. Ploin D, Gillet Y, Morfin F, Fouilhoux A, Billaud G, Liberas S, Denis A, Thouvenot D, Fritzell B, Lina B, Floret D: **Influenza burden in febrile infants and young children in a pediatric emergency department.** *Pediatr Infect Dis J* 2007, **26**:142–147.
 37. Esposito S, Cantarutti L, Molteni CG, Daleno C, Scala A, Tagliabue C, Pelucchi C, Giaquinto C, Principi N: **Clinical manifestations and socio-economic impact of influenza among healthy children in the community.** *J Infect* 2011, **62**:379–387.
 38. Principi N, Esposito S, Gasparini R, Marchisio P, Crovari P: **Burden of influenza in healthy children and their households.** *Arch Dis Child* 2004, **89**:1002–1007.
 39. Liberati A, Altman DG, Tetzlaff J, Mulrow C, Gøtzsche PC, Ioannidis JP, Clarke M, Devereaux PJ, Kleijnen J, Moher D: **The PRISMA statement for reporting systematic reviews and meta-analyses of studies that evaluate healthcare interventions: explanation and elaboration.** *BMJ* 2009, **339**:b2700. doi:10.1136/bmj.b2700.
 40. Moher D, Liberati A, Tetzlaff J, Altman DG, The PRISMA Group: **Preferred reporting items for systematic reviews and meta-analyses: the PRISMA Statement.** *PLoS Med* 2009, **6**(6):e1000097. doi:10.1371/journal.pmed1000097.
 41. Oxford Centre for Evidence-based Medicine: *Levels of Evidence.* <http://www.cebm.net/index.aspx?o=1025>.
 42. Heinonen S, Silvennoinen H, Lehtinen P, Vainionpää R, Vahlberg T, Ziegler T, Ikonen N, Puhakka T, Heikkinen T: **Early oseltamivir treatment of influenza in children 1-3 years of age: a randomized controlled trial.** *Clin Infect Dis* 2010, **51**:887–894.
 43. Ploin D, Liberas S, Thouvenot D, Fouilhoux A, Gillet Y, Denis A, Chapuis F, Lina B, Floret D: **Influenza burden in children newborn to eleven months of age in a pediatric emergency department during the peak of an influenza epidemic.** *Pediatr Infect Dis J* 2003, **22**(Suppl 10):S218–S222.
 44. Sanni E, Mazaud S, Odievre MH, Weill C, Laurent C, Olivier C: **Influenzae infection in hospitalized children.** *J Pédiat Puér* 2004, **17**:331–337.
 45. Ehikien B, Ihorst G, Lippert B, Rohwedder A, Petersen G, Schumacher M, Forster J, PRIDE Study Group: **Economic impact of community-acquired and nosocomial lower respiratory tract infections in young children in Germany.** *Eur J Pediatr* 2005, **164**:607–615.
 46. Bosis S, Esposito S, Niesters HG, Crovari P, Osterhaus AD, Principi N: **Impact of human metapneumovirus in childhood: comparison with respiratory syncytial virus and influenza viruses.** *J Med Virol* 2005, **75**:101–104.
 47. Esposito S, Gasparini R, Bosis S, Marchisio P, Tagliabue C, Tosi S, Bianchi C, Crovari P, Principi N: **Clinical and socio-economic impact of influenza and respiratory syncytial virus infection on healthy children and their households.** *Clin Microbiol Infect* 2005, **11**:933–936.
 48. Principi N, Esposito S, Marchisio P, Gasparini R, Crovari P: **Socioeconomic impact of influenza on healthy children and their families.** *Pediatr Infect Dis J* 2003, **22**(Suppl 10):S207–S210.
 49. Bueving HJ, van der Wouden JC, Raat H, Bernsen RM, de Jongste JC, van Suijlekom-Smit LW, Osterhaus AD, Rimmelzwaan GF, Möhlen MR, Thomas S: **Influenza vaccination in asthmatic children: effects on quality of life and symptoms.** *Eur Respir J* 2004, **24**:925–931.
 50. Van Der Zalm MM: **Respiratory pathogens in respiratory tract illnesses during the first year of life: a birth cohort study.** *Pediatr Infect Dis J* 2009, **28**:472–476.
 51. Glezen WP, Paredes A, Taber LH: **Influenza in children. Relationship to other respiratory agents.** *JAMA* 1980, **243**(13):1345–1349.
 52. Neuzil KM, Zhu Y, Griffin MR, Edwards KM, Thompson JM, Tollefson SJ, Wright PF: **Burden of inter-pandemic influenza in children younger than 5 years: a 25-year prospective study.** *J Infect Dis* 2002, **185**(2):147–152.
 53. Lum LC, Borja-Tabora CF, Breiman RF, Vesikari T, Sablan BP, Chay OM, Tantracheewathorn T, Schmitt HJ, Lau YL, Bowonkiriakachorn P, Tam JS, Lee BW, Tan KK, Pejcz J, Cha S, Gutierrez-Brito M, Kaltenis P, Vertruyen A, Czajka H, Bojarskas J, Brooks WA, Cheng SM, Rappaport R, Baker S, Gruber

- WC, Forrest BD: Influenza vaccine concurrently administered with a combination measles, mumps, and rubella vaccine to young children. *Vaccine* 2010, **28**(6):1566–1574.
54. Keech M, Beardsworth P: The impact of influenza on working days lost: a review of the literature. *Pharmacoeconomics* 2008, **26**:911–924.
55. Katz M, Rubino A, Collier J, Rosen J, Ehrich JH: Demography of pediatric primary care in Europe: delivery of care and training. *Pediatrics* 2002, **109**:788–796.
56. Paget WJ, Balderston C, Casas I, Donker G, Edelman L, Fleming D, Larrauri A, Meijer A, Puzelli S, Rizzo C, Simonsen L, EPIA Collaborators: Assessing the burden of paediatric influenza in Europe: the European Paediatric Influenza Analysis (EPIA) project. *Eur J Pediatr* 2010, **169**:997–1008.
57. European Center for Disease Prevention and Control: ECDC Forward Look Risk Assessment. *Likely Scenarios for Influenza in 2010 and the 2010/2011 Influenza Season In Europe and the Consequent Work Priorities*. http://www.ecdc.europa.eu/en/healthtopics/H1N1/Documents/1003_RA_forward_look_influenza.pdf.
58. World Health Organization: *Vaccine Introduction Guidelines. Adding a Vaccine to a National Immunization Programme: Decision and Implementation*. http://whqlibdoc.who.int/hq/2005/WHO_IVB_05.18.pdf.
59. Lopalco PL: Improving vaccination programmes in the European Union. *J Public Health* 2008, **16**:281–285.
60. Freed GL: The structure and function of immunization advisory committees in Western Europe. *Hum Vaccin* 2008, **4**:292–297.

doi:10.1186/1471-2458-12-968

Cite this article as: Antonova et al.: Burden of paediatric influenza in Western Europe: a systematic review. *BMC Public Health* 2012 **12**:968.

**Submit your next manuscript to BioMed Central
and take full advantage of:**

- Convenient online submission
- Thorough peer review
- No space constraints or color figure charges
- Immediate publication on acceptance
- Inclusion in PubMed, CAS, Scopus and Google Scholar
- Research which is freely available for redistribution

Submit your manuscript at
www.biomedcentral.com/submit

