

CORRECTION

Open Access



Correction: Association between multiple-heavy-metal exposures and systemic immune inflammation in a middle-aged and elderly Chinese general population

Linhai Zhao^{1†}, Yanfei Wei^{3†}, Qiumei Liu^{1†}, Jiansheng Cai^{2,4}, Xiaoting Mo¹, Xu Tang¹, Xuexiu Wang¹, Lidong Qin¹, Yujian Liang¹, Jiejing Cao¹, Chuwu Huang¹, Yufu Lu¹, Tiantian Zhang¹, Lei Luo¹, Jiahui Rong¹, Songju Wu¹, Wenjia Jin¹, Qinyi Guan¹, Kaisheng Teng¹, You Li², Jian Qin^{1,5,6,7*} and Zhiyong Zhang^{1,2,4*}

Correction: *BMC Public Health* 24, 1192 (2024)
<https://doi.org/10.1186/s12889-024-18638-z>

In the original publication of this article [1] there was an error in Figure 3. The rightmost values of the P trend and the corresponding asterisk symbol were not visible. The incorrect and correct figure are shown in this correction article. The original article has been updated.

[†]Linhai Zhao, Yanfei Wei and Qiumei Liu contributed equally to this work.

The original article can be found online at <https://doi.org/10.1186/s12889-024-18638-z>.

*Correspondence:

Jian Qin

qinjian@gxmu.edu.cn

Zhiyong Zhang

rpazz@163.com

¹ Department of Occupational and Environmental Health, School of Public Health, Guangxi Medical University, Nanning, Guangxi Zhuang Autonomous Region, China

² School of Public Health, Guilin Medical University, Guilin, Guangxi Zhuang Autonomous Region, China

³ Department of Epidemiology, School of Public Health (Guangdong Provincial Key Laboratory of Tropical Disease Research), Southern Medical University, Guangzhou, Guangdong, China

⁴ Guangxi Key Laboratory of Entire Lifecycle Health and Care, Guilin Medical University, Guilin, Guangxi Zhuang Autonomous Region, China

⁵ Guangxi Colleges and Universities Key Laboratory of Prevention and Control of Highly Prevalent Diseases, Guangxi Medical University, Nanning, Guangxi Zhuang Autonomous Region, China

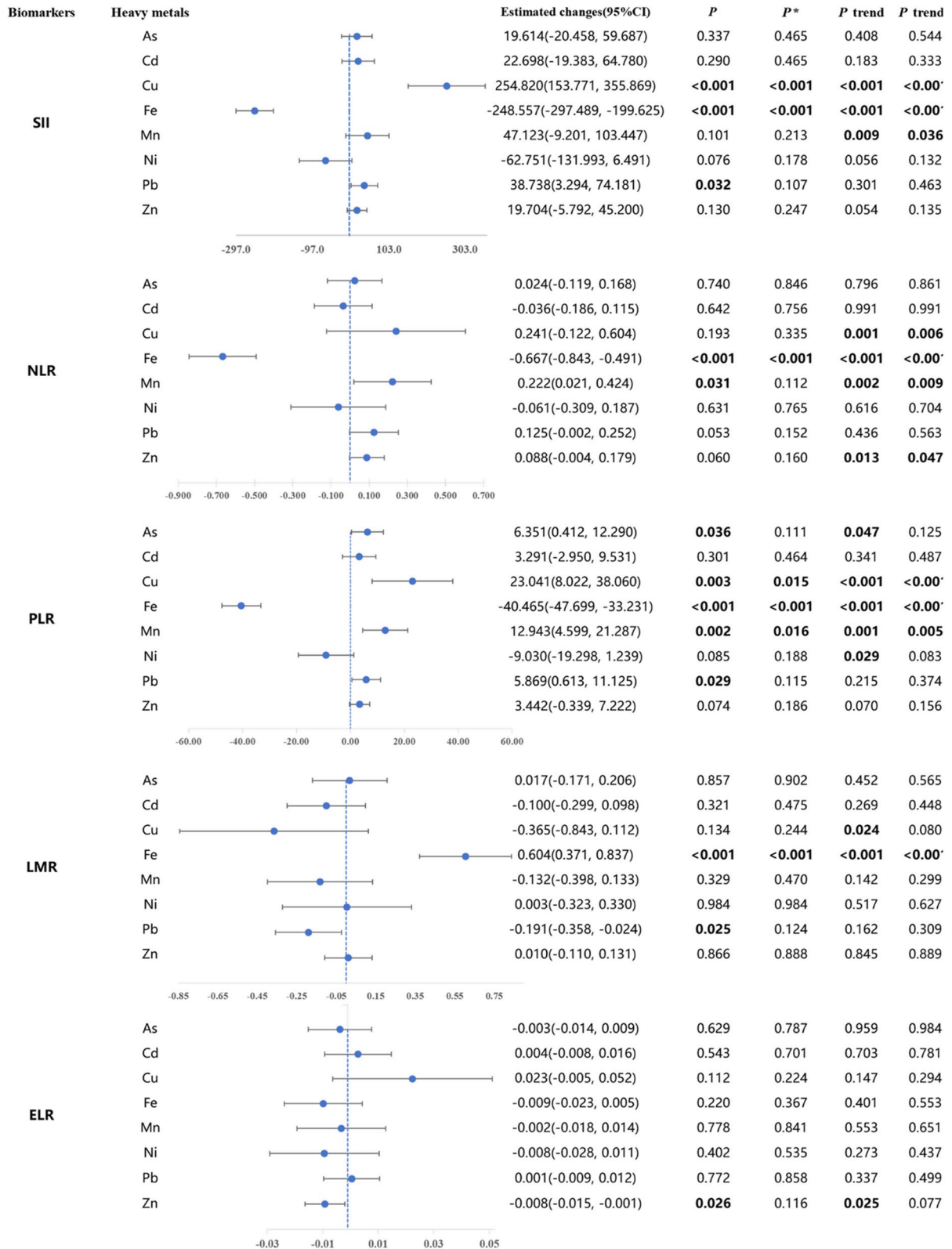
⁶ Guangxi Key Laboratory of Environment and Health Research, Guangxi Medical University, Nanning, Guangxi Zhuang Autonomous Region, China

⁷ Key Laboratory of Longevity and Aging-related Diseases of Chinese Ministry of Education, Guangxi Medical University, Nanning, Guangxi Zhuang Autonomous Region, China

Full list of author information is available at the end of the article



Incorrect figure 3



Correct figure3

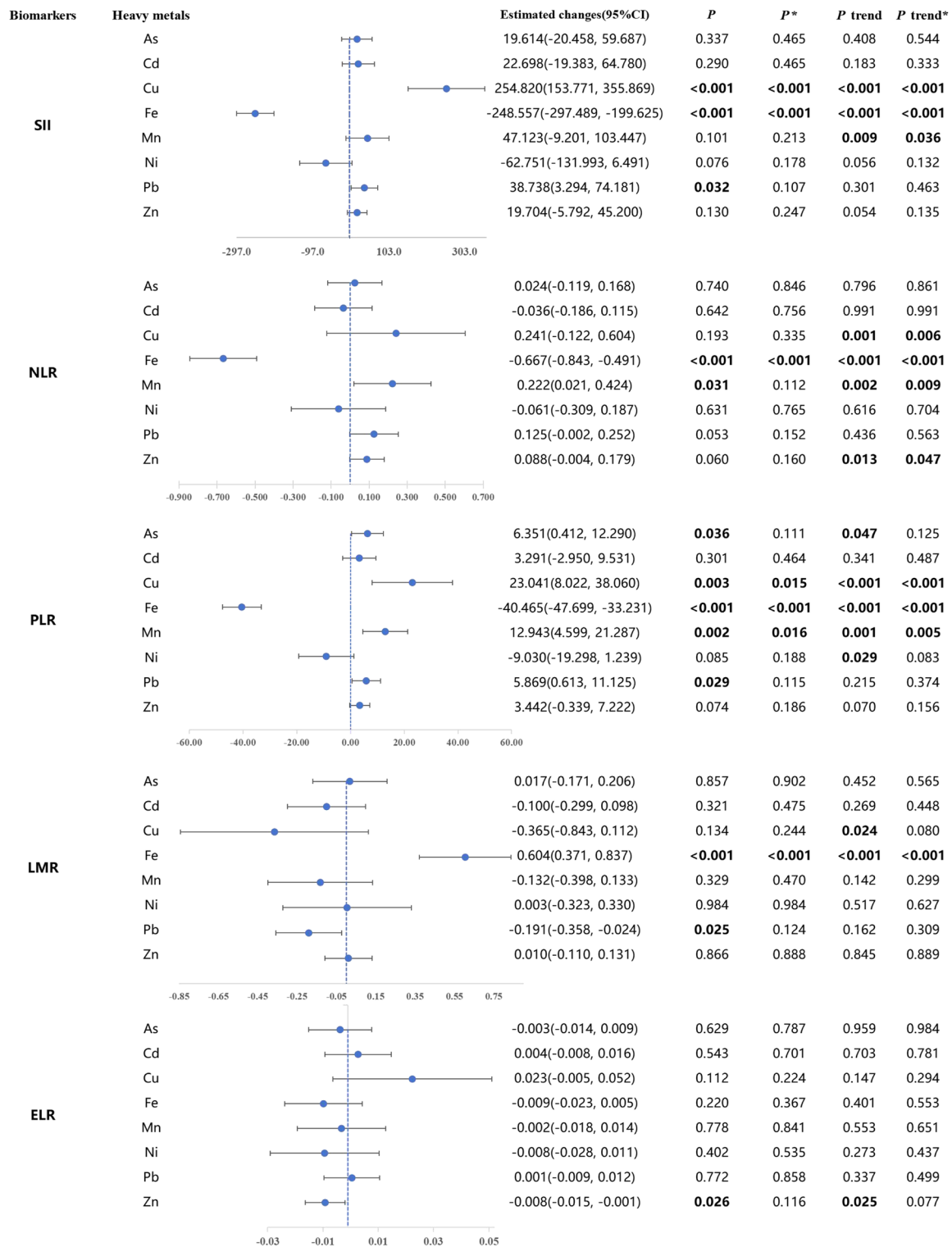


Fig. 3 Results of Generalized Linear Regression Analysis of the Association Between Single Plasma Heavy Metals (log₁₀ Converted Values) and immune inflammation biomarkers. All above are adjusted for gender, age, Ethnicity, Educated, BMI, Smoking, Alcohol consumption, Marital status, Diabetes, Dyslipidemia, and Hypertension. β is the change in the standardized systemic inflammatory index per 1 SD increase in log₁₀-converted plasma heavy metal concentrations. The value of β at the blue dashed line is 0. *P* trend was examined by using the median of each quartile of plasma heavy metals as a continuous variable in the model. **P* value/*P* trend in multiple testing

Author details

¹Department of Occupational and Environmental Health, School of Public Health, Guangxi Medical University, Nanning, Guangxi Zhuang Autonomous Region, China. ²School of Public Health, Guilin Medical University, Guilin, Guangxi Zhuang Autonomous Region, China. ³Department of Epidemiology, School of Public Health (Guangdong Provincial Key Laboratory of Tropical Disease Research), Southern Medical University, Guangzhou, Guangdong, China. ⁴Guangxi Key Laboratory of Entire Lifecycle Health and Care, Guilin Medical University, Guilin, Guangxi Zhuang Autonomous Region, China. ⁵Guangxi Colleges and Universities Key Laboratory of Prevention and Control of Highly Prevalent Diseases, Guangxi Medical University, Nanning, Guangxi Zhuang Autonomous Region, China. ⁶Guangxi Key Laboratory of Environment and Health Research, Guangxi Medical University, Nanning, Guangxi Zhuang Autonomous Region, China. ⁷Key Laboratory of Longevity and Aging-related Diseases of Chinese Ministry of Education, Guangxi Medical University, Nanning, Guangxi Zhuang Autonomous Region, China.

Published online: 30 June 2024

Reference

1. Zhao L, Wei Y, Liu Q, et al. Association between multiple-heavy-metal exposures and systemic immune inflammation in a middle-aged and elderly Chinese general population. *BMC Public Health*. 2024;24:1192. <https://doi.org/10.1186/s12889-024-18638-z>.