

CORRECTION

Open Access



Correction: Age- and cause-specific contributions to increase in life expectancy at birth in Korea, 2000–2019: a descriptive study

Ikhan Kim^{1*} and Hyeona Bae¹

Correction: *BMC Public Health* 24, 431 (2024)
<https://doi.org/10.1186/s12889-024-17974-4>

In the original publication of this article [1] there was an error in Figure 3. The mortality rate by gender, age group, and cause of death presented in figure 3 was presented as number of deaths per 100,000 people. However, the death rate was overestimated as a result of a computation error. and as a result, adding up the number of deaths by cause of death exceeds 100,000 in the oldest age group.

The incorrect and correct figure 3 are shown in this correction article. The original article has been updated.

The original article can be found online at <https://doi.org/10.1186/s12889-024-17974-4>.

*Correspondence:

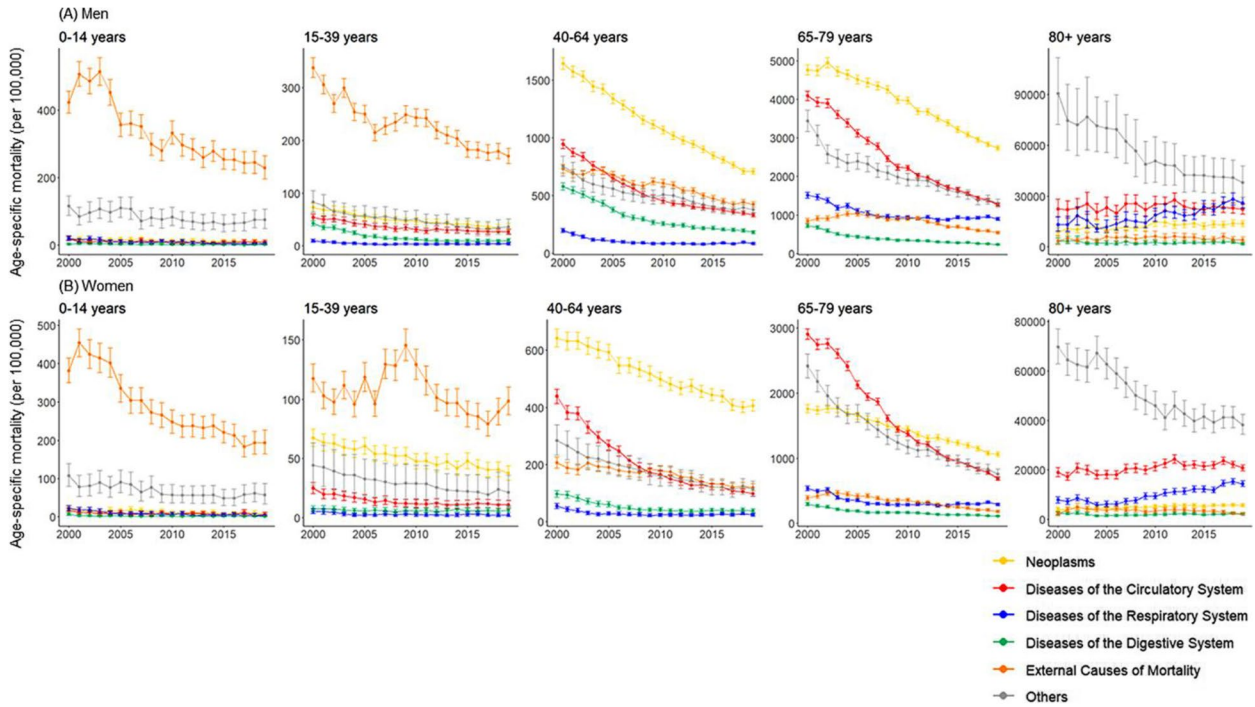
Ikhan Kim
ikhan.kim@kosin.ac.kr

¹ Department of Medical Humanities and Social Medicine, Kosin University College of Medicine, 262 Gamcheon-Ro, Seo-Gu, Busan 49267, Korea

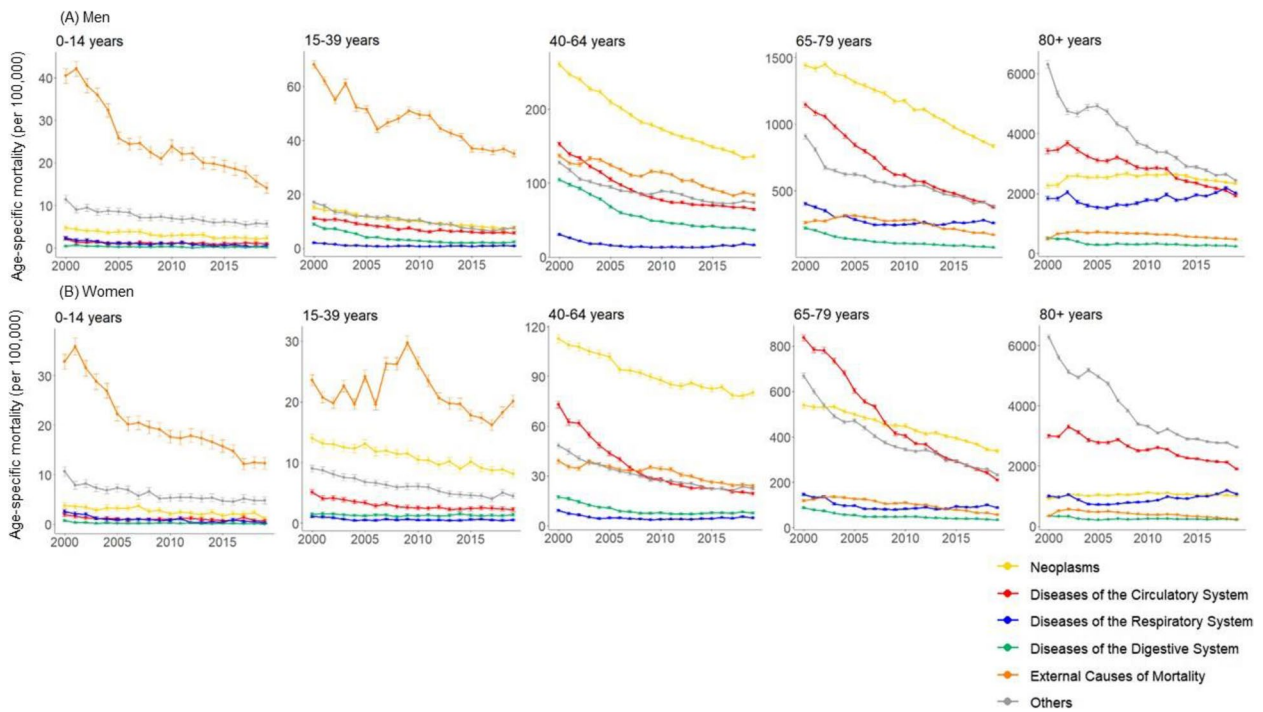


© The Author(s) 2024. **Open Access** This article is licensed under a Creative Commons Attribution 4.0 International License, which permits use, sharing, adaptation, distribution and reproduction in any medium or format, as long as you give appropriate credit to the original author(s) and the source, provide a link to the Creative Commons licence, and indicate if changes were made. The images or other third party material in this article are included in the article's Creative Commons licence, unless indicated otherwise in a credit line to the material. If material is not included in the article's Creative Commons licence and your intended use is not permitted by statutory regulation or exceeds the permitted use, you will need to obtain permission directly from the copyright holder. To view a copy of this licence, visit <http://creativecommons.org/licenses/by/4.0/>. The Creative Commons Public Domain Dedication waiver (<http://creativecommons.org/publicdomain/zero/1.0/>) applies to the data made available in this article, unless otherwise stated in a credit line to the data.

Incorrect figure 3



Correct figure 3



Published online: 03 June 2024

Reference

- 1 Kim I, Bae H. Age- and cause-specific contributions to increase in life expectancy at birth in Korea, 2000–2019: a descriptive study. *BMC Public Health*. 2024;24:431. <https://doi.org/10.1186/s12889-024-17974-4>.