


RESEARCH ARTICLE

Open Access



Low socioeconomic position is a risk factor for delay to treatment and mortality of testicular cancer patients in Hungary, a prospective study

Zsófia Küronya^{1*} , Georgina Fröhlich^{2,3}, Andrea Ladányi⁴, Tamás Martin¹, Lajos Géczi¹, Fruzsina Gyergyai¹, Orsolya Horváth¹, Gergő Kiszner¹, Ágnes Kovács⁵, Tamás Dienes¹, Enikő Lénárt¹, Krisztián Nagyiványi¹, Tibor Szarvas⁶, Mihály Szőnyi⁷, Attila Tóth⁸ and Krisztina Biró¹

Abstract

Background: In Hungary, the mortality rate for testicular germ cell cancer (TGCC) is 0,9/100000 which is significantly higher than the EU average. We prospectively evaluated the effect of socioeconomic position on patient delay and therapy outcomes.

Methods: Questionnaires on subjective social status (MacArthur Subjective Status Scale), objective socioeconomic position (wealth, education, and housing data), and on patient's delay were completed by newly diagnosed TGCC patients.

Results: Patients belonged to a relatively high socioeconomic class, a university degree was double the Hungarian average, Cancer-specific mortality in the highest social quartile was 1.56% while in the lowest social quartile 13.09% ($p = 0.02$). In terms of patient delay, 57.2% of deceased patients waited more than a year before seeking help, while this number for the surviving patients was 8.0% ($p = 0.0000$). Longer patient delay was associated with a more advanced stage in non-seminoma but not in seminoma, the correlation coefficient for non-seminoma was 0.321 ($p < 0.001$). For patient delay, the most important variables were the mother's and patient's education levels ($r = -0.21$, $p = 0.0003$, and $r = -0.20$, $p = 0.0005$), respectively. Since the patient delay was correlated with the social quartile and resulted in a more advanced stage in non-seminoma, the lower social quartile resulted in higher mortality in non-seminoma patients ($p = 0.005$) but not in seminoma patients ($p = 0.36$) where the patient delay was not associated with a more advanced stage.

Conclusions: Based on our result, we conclude that to improve survival, we should promote testicular cancer awareness, especially among the most deprived populations, and their health care providers.

Keywords: Testicular cancer, Socioeconomic position, Patient delay

* Correspondence: kuronyaz@gmail.com

¹Department of Genitourinary Medical Oncology and Clinical Pharmacology, National Institute of Oncology, Ráth György u. 7-9, Budapest H-1122, Hungary

Full list of author information is available at the end of the article



© The Author(s). 2021 **Open Access** This article is licensed under a Creative Commons Attribution 4.0 International License, which permits use, sharing, adaptation, distribution and reproduction in any medium or format, as long as you give appropriate credit to the original author(s) and the source, provide a link to the Creative Commons licence, and indicate if changes were made. The images or other third party material in this article are included in the article's Creative Commons licence, unless indicated otherwise in a credit line to the material. If material is not included in the article's Creative Commons licence and your intended use is not permitted by statutory regulation or exceeds the permitted use, you will need to obtain permission directly from the copyright holder. To view a copy of this licence, visit <http://creativecommons.org/licenses/by/4.0/>. The Creative Commons Public Domain Dedication waiver (<http://creativecommons.org/publicdomain/zero/1.0/>) applies to the data made available in this article, unless otherwise stated in a credit line to the data.

Background

Malignant testicular germ cell cancer (TGCC) is relatively uncommon, however, this is still the leading type of cancer in men between the ages of 20 and 40 years [1]. Due to huge improvements in imaging and chemotherapy, mortality rates in patients with testicular cancer have declined in recent decades. In the most affluent world regions, while rapid increases in incidence rates have been observed lately, the mortality rates declined to 0.2–0.3 per 100,000. However, in Central and Eastern European (CEE) countries (i.e., Bulgaria, Czech Republic, Hungary, Poland, Romania, and Slovakia), rates have only moderately declined and were still 1.3/100,000 [2–4] for men aged between 20 and 44 years in 1995–1997. In the first decade of the 2000s, a significant decline in testicular cancer patients' mortality rates appeared also in CEE countries, but the ratio is still higher than in the more developed EU members [5]. According to a WHO database, Hungary and Latvia had the worst TGCC mortality rate in Europe (0.9/100,000) between 2000 and 2006 [6]. The slower and delayed declines in the less developed, lower resource countries imply that the high cost of appropriate treatments together with inadequate patient referral systems are responsible for the high mortality rates and less favourable trends. Another factor of the slower progress may partly relate to differences in socioeconomic position (SEP), i.e., men with lower SEP may be characterized by a lack of awareness and may be less likely to seek immediate medical help, moreover, they tend to have the worst access to medical service, particularly in remote and rural communities. There is extensive literature describing SEP differences and cancer survival in countries around the world in various health care systems [7–12]. The authors of this report prospectively evaluated the effects of socioeconomic position on delay to diagnosis, stage distribution, and cancer-specific mortality (CSM) in men with TGCC. The studied patient cohort was treated at the National Institute of Oncology GU department, which is the main germ cell cancer center in Hungary, treating roughly 60% of the approximately 600 Hungarian TGCC patients yearly. Diagnosis of cancer can make it difficult to measure the socioeconomic position (SEP), since patients may lose their regular income during treatment, and asking about it may become a particularly sensitive issue. Due to this difficulty, several studies suggest using subjective social status (MacArthur Subjective Status Scale-SSS) instead of traditional SEP [13–17]. Since SSS is easier to measure the current study examined how SSS correlates with SEP indicators among Hungarian testicular cancer patients.

The aim of this research was to investigate how the patients' socioeconomic position affects the time elapsed between onset of symptoms and diagnosis, and therapy outcome, and how objective socioeconomic position

correlates with subjective social status among testicular cancer patients.

Methods

Ethical statement

This prospective, non-interventional study was carried out between January 2016 and January 2018, at the National Institute of Oncology. The database lock occurred in September 2020. The study was performed in accordance with Hungarian laws and regulations and was approved by the Hungarian National Scientific Ethical Committee (approval number: 44476–2/2016), and as per the standards of the World Medical Association Declaration of Helsinki. All patients who were willing to participate signed informed consent.

Study population

Inclusion criteria included male patients over 16 years old (inclusive), with a gonadal onset germinal cancer. Every new patient completed the questionnaire on their first visit to our department.

Clinical stage and prognosis were determined according to the Union for International Cancer Control (UICC) [18], and the International Germ Cell Cancer Collaborative Group (IGCCCG) [19] based on the pathology report, the tumor marker (AFP, HCG, LDH) level, and the CT scan. Castration was the first-line treatment for the majority of patients (Table 1), followed by surveillance or adjuvant chemotherapy (St I), or by multiple cycles of platinum-based chemotherapy, and salvage surgery where needed (St II-III). In 16 patients whose conditions related to metastatic dissemination required immediate chemotherapy, orchiectomy was postponed until the completion of chemotherapy. Patients received the internationally recognized standard of care, and after completion of treatment were followed based on the current European Society for Medical Oncology (ESMO) guideline [20]. The median observation time is 35 months. During this period no patient was lost to follow up.

Assessment of the subjective social status and objective socioeconomic position

The subjective social status (SSS) and objective socioeconomic position (SEP) questionnaires were completed on the first consultation visit of newly diagnosed TGCC patients. The SSS was determined based on the MacArthur Scale of Subjective Status questionnaire [21]. After the owner's written permission for usage and linguistic validation, the questionnaire has been translated into Hungarian and was adapted for this study. MacArthur scale is a social or community hierarchy ladder used by the patients based on their deemed place; with values of 1–10 [13, 16, 22, 23]. We measured two variables: social

Table 1 Characteristics of the surviving and the deceased patients

	Surviving patients (N = 289)	Deceased patients (N = 14)	
	mean ± SD		
Age of patient	35.9 ± 9.8	41.62 ± 12.3	* <i>p</i> = 0.0277
Age of mother at childbirth	26.1 ± 5.5	24.92 ± 6.4	* <i>p</i> = 0.4397
Age of father at childbirth	29.4 ± 6.5	27.77 ± 7.8	* <i>p</i> = 0.4186
Histology	N		
Seminoma	151 (98.1%)	3 (1.9%)	
Non-seminoma	138 (92.6%)	11 (7.4%)	** <i>p</i> = 0.0289
First-line treatment	N		
Castration	277 (95.8%)	10 (71.4%)	** <i>p</i> = 0.0038
Neo-adjuvant chemotherapy followed by castration	12 (4.2%)	4 (28.6%)	
Education	N		
Primary school or below	21 (7.3%)	2 (14.3%)	** <i>p</i> = 0.0012
Vocational school	65 (22.7%)	10 (71.4%)	
High School	98 (34.1%)	0 (0.0)	
University/college	103 (35.9%)	2 (14.3%)	
Settlement	N		
Budapest	94 (32.5%)	1 (7.1%)	** <i>p</i> = 0.0271
County seat	38 (13.1%)	2 (14.3%)	
City	97 (33.6%)	5 (35.7%)	
Village	60 (20.8%)	6 (42.9%)	
Prognosis	N		
Good	262 (90.8%)	5 (35.7%)	** <i>p</i> < 0.001
Intermediate	12 (4.3%)	2 (14.3%)	
Poor	14 (4.9%)	7 (50.0%)	
Patient's delay	N		
≤ 1 week	109 (37.7%)	1 (7.1%)	**** <i>p</i> < 0.001
1 week–1 month	102 (35.2%)	1 (7.1%)	
1–6 months	45 (15.6%)	3 (21.5%)	
6–12 months	10 (3.5%)	1 (7.1%)	
> 12 months	23 (8.0%)	8 (57.2%)	
Social quartile (SES)	N		
1	73 (25.3%)	11 (78.7%)	** <i>p</i> < 0.001
2	66 (22.8%)	1 (7.1%)	
3	62 (21.4%)	1 (7.1%)	
4	63 (21.8%)	1 (7.1%)	
N.D.	25 (8.7%)	0 (0.0%)	

N: number of patients, SD: standard deviation, N.D. No data, *Student's t-test, **Fisher-exact test, ***Mann-Whitney U test, ****logistic regression

status, and community status value (Fig. 1). For objective SEP patient's highest educational attainment, residence type, size of dwelling (m² floor area), the number of household members, number of members with income, internet usage frequency possession of consumer durable goods, and the parents' highest educational level were evaluated. (Table 3). The SEP questionnaire was

developed especially for this study, and you can find the English version of it as a supplementary file (supplementary file). We calculated an index depending on the patient's highest educational level and wealth. Based on this index, patients were divided into 4 quartiles (SEP quartiles). Since income is a sensitive piece of data, wealth was calculated indirectly based on the number of



Fig. 1 Illustration of the ladder used in the “MacArthur” Scale of Subjective Social Status Retrieved from www.macses.ucsf.edu [21] (used with the author’s written permission) Social status value: At the top of the ladder are the people who are the best off, those who have the most money, the most education, and the best jobs. At the bottom are the people who are the worst off, those who have the least money, least education, worst jobs, or no job Community status value: Think of this ladder as representing where people stand in their communities. People define community in different ways; please define it in whatever way is most meaningful to you. At the top of the ladder are people who have the highest standing in their community. At the bottom are the people who have the lowest standing in their community “Please place an ‘X’ on the rung that best represents where you think you stand on the ladder”

consumer durable goods and the calculated size of living area per capita. For the patient highest educational level, see Table 3. The first quartile was the lowest, with the poorest status and lowest educational level. The section on illness comprised of questions including the time gap between the first symptoms and visiting a doctor (patient delay, PD). Permanent address, histology, stage, and treatment outcome were extracted from the patient database.

Statistical analyses

Statistical analyses were performed using SPSS 22.0 (IBM Corp.) and Statistica 12.5 (StatSoft, Tulsa, OK, USA). The correlation between the patient’s delay and survival was determined by logistic regression. To examine the effect of SEP on survival Fisher exact test was carried out. The association between various patient characteristics and OS was analyzed by Kaplan-Meier analysis. To examine the correlation between patient education and PD, and between SSS and SEP, Spearman rank correlation was performed. Results were considered significant at p values lower than 0.05.

Results

Patient characteristics

Altogether, 306 patients filled out the questionnaire. Analyses were performed on 303 patients who met the inclusion criteria (3 cases with non-gonadal origin were excluded from the analysis). The patients’ mean age was 35.9 years (seminoma 38.5, non-seminoma 33.1) (Table 2). The mother’s mean age at childbirth was 26 years whilst the father’s mean age at childbirth was 29.1 years. Patients belonged to a relatively high socioeconomic class, 103 (34%) patients had a university or college degree, which is twice as many as the Hungarian society average [24]. SSS among patients was 5.57 ± 1.70 while the Hungarian average among males in this age group is 3.97 ± 0.03 (out of 10) [25]. Fourteen patients died during the study period, all death was related to testicular cancer, hence OS and CSS were identical.

Table 2 Patient characteristics

	Seminoma (N = 154)	Non-seminoma (N = 149)
Age	mean ± SD (range)	mean ± SD (range)
Patient age (years)	38.5 ± 8.8 (22–64)	33.1 ± 9.6 (17–77)
Mother's age at childbirth (years)	25.8 ± 5.2 (14–44)	26.2 ± 5.7 (16–43)
Father's age at childbirth (years)	28.9 ± 6.1 (16–58)	29.3 ± 6.6 (17–54)
Socioeconomic position		
School type – Patient's education	N	
Primary school or below	6 (3.9%)	17 (11.4%)
Vocational school	37 (24.0%)	38 (25.5%)
High school	53 (34.4%)	47 (31.5%)
University/college	57 (37.0%)	46 (30.9%)
N.D.	1 (0.7%)	1 (0.7%)
School type – Mother's education	N	
Primary school or below	26 (16.9%)	26 (17.4%)
Vocational school	43 (27.9%)	37 (24.8%)
High school	51 (33.1%)	52 (34.9%)
University/college	31 (20.1%)	29 (19.5%)
N.D.	3 (2.0%)	5 (3.4%)
School type – Father's education	N	
Primary school or below	12 (7.8%)	24 (16.1%)
Vocational school	64 (41.6%)	54 (36.3%)
High school	45 (29.2%)	27 (18.1%)
University/college	28 (18.2%)	34 (22.8%)
N.D.	5 (3.2%)	10 (6.7%)
Patient's residence type	N	
Budapest (capital)	49 (31.8%)	48 (32.2%)
County seat	28 (18.2%)	15 (10.1%)
City	48 (31.2%)	55 (36.9%)
Small town/village	29 (18.8%)	31 (20.8%)
Distance from the center – km (N.I.O.)	Mean (range)	
	80.3 (10–300)	87.3 (10–300)
Number of household members	Mean (range)	
	3.0 (1–8)	3.0 (1–7)
Number of members with income	Mean (range)	
	2.0 (0–6)	2.0 (1–5)
Internet usage frequency	N	
Daily	127 (82.5%)	130 (87.2%)
Few times a week to a few times a month	19 (12.3%)	14 (9.4%)
Less frequently	8 (5.2%)	5 (3.4%)
Stage	N	
IA	101 (65.6%)	46 (30.9%)
IB	9 (5.9%)	23 (15.4%)
IS	0 (0.0%)	2 (1.3%)
IIA	15 (9.7%)	19 (12.8%)
IIB	10 (6.5%)	15 (10.1%)

Table 2 Patient characteristics (Continued)

	Seminoma (N = 154)	Non-seminoma (N = 149)
IIC	15 (9.7%)	7 (4.7%)
IIIA	2 (1.3%)	9 (6.0%)
IIIB	2 (1.3%)	13 (8.7%)
IIIC	NA	15 (10.1%)
Prognosis	N	
Good	152 (98.7%)	116 (77.9%)
Intermediate	2 (1.3%)	12 (8%)
Poor	N.A	21 (14.1%)

Separated based on histology (seminoma, non-seminoma). N: number of patients, SE: standard error, N.I.O.: National Institute of Oncology, N.D.: no data, N.A. not applicable
NA: not applicable

Deceased patients were significantly older than the surviving patients, 41.6 vs. 35.9 years ($p = 0.0277$) (Table 1). Among patients with metastatic seminoma 152 (98.7%) belonged to the good and 2 (1.3%) to the intermediate prognostic group, while among those with non-seminoma 116 (77.9%), 12 (8.0%), and 21 (14.1%) belonged to good, intermediate, and poor prognostic group, respectively. Table 2 shows the stage and prognosis distribution among seminoma and non-seminoma patients. The majority of patients belonged to stage I (seminoma: 71.5% and non-seminoma 47.6%), though a higher proportion of non-seminoma patients had

metastatic disease (StII/StIII) at diagnosis (28.5% seminoma vs. 52.4% non-seminoma).

Objective socioeconomic position and subjective social status

Regarding patients' residence type, distance from the National Institute of Oncology, number of household members, number of members with income, and internet usage frequency there was no difference between the seminoma and non-seminoma groups (Table 2). Table 3 presents social quartiles based on objective socioeconomic position and the distribution of SSS. For SSS the full range of scores (1–10) occurred and their distribution was normal. (Table 3). The mean SSS value for the entire sample was 5.57 ± 1.70 . In terms of SSS, there was also no difference between seminoma and non-seminoma patients ($p = 0.7898$).

Table 3 Socioeconomic position (SEP) and subjective (SSS) social status value

Social quartile (SES)	Seminoma (N = 154)	Non-seminoma (N = 149)
1	39 (25.3%)	45 (30.2%)
2	40 (26.0%)	27 (18.1%)
3	33 (21.4%)	30 (20.1%)
4	31 (20.2%)	33 (22.2%)
N.D.	11 (7.1%)	14 (9.4%)
Social status value (SSS)	N	
1	2 (1.3%)	2 (1.3%)
2	4 (2.6%)	4 (2.7%)
3	12 (7.8%)	8 (5.4%)
4	19 (12.3%)	20 (13.4%)
5	31 (20.1%)	38 (25.5%)
6	36 (23.4%)	33 (22.2%)
7	26 (16.9%)	23 (15.4%)
8	15 (9.7%)	16 (10.7%)
9	4 (2.6%)	4 (2.7%)
10	2 (1.3%)	0 (0.0%)
N.D.	3 (2.0%)	1 (0.7%)

N.D.: no data

Patients' objective socioeconomic position versus subjective self-grade values

The patient's subjective social status values were compared to the social quartiles. Both the social ladder value and the community ladder value exhibited a significant correlation with the objective socioeconomic position-based quartiles ($r = 0.508$ and $r = 0.417$, respectively, $p < 0.001$).

Factors associated with patient's delay

The diagnostic time path was from within 1 week to over 1 year, with the '1 week-1 month' being the median (102 patients). PD negatively correlated with social quartile ($r = -0.18$, $p = 0.0022$). We also checked the effect of the elements of SEP separately, including those that were not part of the social quartile. (Table 3). We found a negative correlation between the father's education and patient delay (PD) ($r = -0.12$, $p = 0.0383$), and an even stronger negative correlation between the mother's education and the PD, as well as the patient's education and the PD ($r = -0.21$, $p = 0.0003$, and $r = -0.20$, $p = 0.0005$, respectively). Table 4 shows PD based on the

Table 4 Patient's delay (first visit to GP) based on educational level – all patients

Patient delay (time)	Primary school or below (N = 23)	Vocational school (N = 75)	High school (N = 100)	University/ college (N = 103)
≤1 week	7 (30.4%)	19 (25.3%)	38 (38.0%)	46 (44.6%)
1 week–1 month	6 (26.1%)	25 (33.3%)	33 (33.0%)	38 (36.9%)
1–6 months	3 (13.1%)	14 (18.6%)	19 (19.0%)	11 (10.7%)
6–12 months	1 (4.3%)	2 (2.6%)	4 (4.0%)	3 (2.9%)
> 12 months	6 (26.1%)	14 (18.6%)	6 (6.0%)	5 (4.9%)
N.D.		1 (1.3%)		

Spearman rank correlation: $-0.2, p = 0.0005$

educational level of the patients. The remaining factors showed no correlation with PD. PD was significantly longer for deceased patients than for surviving patients (Table 1).

Patient delay, social quartile, and overall survival

Of the 14 patients who died during the study course, 11 (78.6%) were in the social quartile 1 (lowest), compared to 73 of the 289 surviving patients (25.3%) ($p < 0.001$) (Table 4) Fig. 2 shows the OS based on the social quartile, and PD for all patients and separated for non-seminoma and seminoma patients. 57.2% of deceased patients waited more than a year before seeking help, while this number for the surviving patients was 8.0% ($p < 0.001$). Longer PD was associated with a more advanced stage in non-seminoma, but not in seminoma patients, the correlation coefficient for NS was 0.321 ($p < 0.001$), for S ($p = 0.081$), hence PD significantly influenced OS in NS ($p = 0.0021$) but not in S ($p = 0.13$) (Fig. 2). Since PD was correlated with the social quartile, as mentioned above, and resulted in a more advanced stage in non-seminoma, a lower social quartile resulted in higher mortality in NS patients ($p = 0.0048$) but not in S patients ($p = 0.36$) where PD was not associated with more advanced stage.

Discussion

The present study has been conducted at one site (National Institute of Oncology, Department of Genitourinary Medical Oncology and Clinical Pharmacology), between 2016 and 2018, and includes the prospective data analysis of the socioeconomic position of patients treated with testicular cancer, or in case of early-stage followed without treatment (surveillance). The 303 patients who participated in the study, are approximately half of the yearly Hungarian TGCC incidence (600–650 cases/year) [26].

Inequalities in cancer mortality and morbidity between populations with different (lower and higher) socioeconomic positions are widely described in the literature [27]. We measured both the SSS (social ladder) and SEP and found that both the social ladder value and the

community ladder value exhibited a significant correlation with the objective socioeconomic position-based quartiles. The association between SEP and SSS, which is distinctive in different cultural groups, was reported in several papers [28, 14, 29]. SSS is easier to use because many people do not want to report their income and education levels. Furthermore, it seems to predict health and general well-being better than objective SEP measurements [23, 30].

In the current study, we found a major deviation in terms of the patient's highest education level compared to the country averages. Those educated to college/university level (34%) were represented 1.5 times more as the Hungarian society averages suggest, while those with the lowest education (8%) have been presented in a significantly lower extent compared to the Hungarian average (27%) [24]. SSS among patients was 5.57 ± 1.70 while the Hungarian average among males in this age group is 3.97 ± 0.03 (out of 10) [25]. Several studies found that testicular cancer occurs more frequently among men of high SEP, and among sons of mothers of high SEP [31, 32], while other reports have not found such associations [33]. A more recent report suggests that the differences have decreased in recent years. In the USA between 1973 and 2008, the TGCC incidence rate for persons with low SEP was lower than the rate for those with high SEP but increased at a faster rate, and the two incidence rates got close to each other by 2008 (5.8/100,000 for low SEP and 6.2/100,000 for high SEP) [34]. Since both the intensity of treatment and prognosis are based on the extent of disease at presentation, a testicular cancer diagnosis must not be delayed. Among our TGCC patients, PD showed significant relations with SEP. In terms of PD, the most influential was the mother's and patient's education. Delay in the diagnosis of testicular cancer is well documented [35–38]. In Dieckmann and colleague's paper PD was found to be related to educational level, i.e. college-educated men had a shorter median delay [38], while Post and Bellis found that the less educated men tend to connect the larger size of the testicle with more virility [39]. On the other hand, Toklu et al. have not detected a correlation between the annual

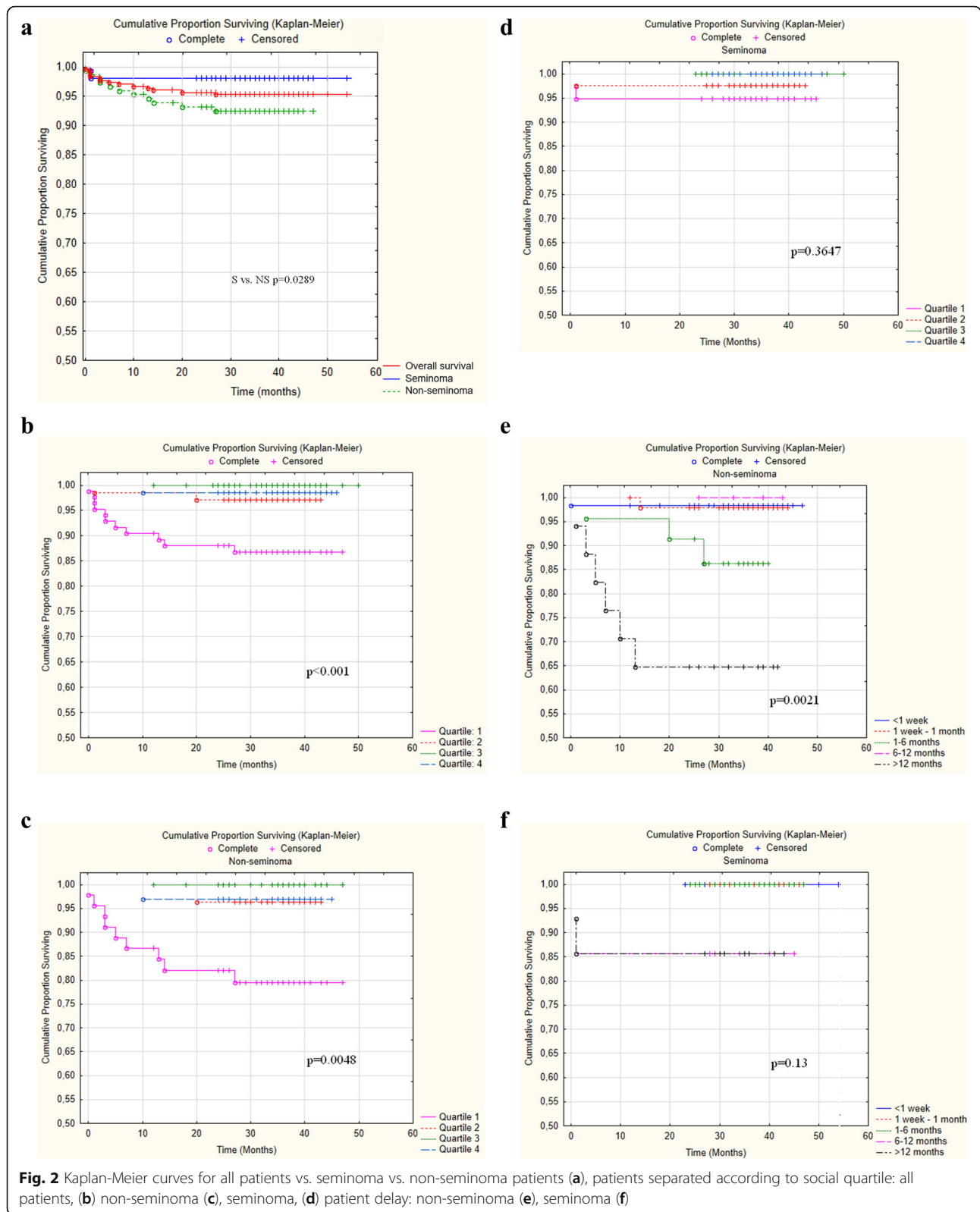


Fig. 2 Kaplan-Meier curves for all patients vs. seminoma vs. non-seminoma patients (a), patients separated according to social quartile: all patients, (b) non-seminoma (c), seminoma, (d) patient delay: non-seminoma (e), seminoma (f)

income, the educational level, and the delay to treatment [40]. There is only a limited reference in the literature to the possible association between the patient's SEP and the stage of their disease. SEER data from 2011 showed that patients living in high poverty areas and those with lower educational levels have a higher chance of an advanced TGCC diagnosis [34]. Seminomas can have indolent growth, and delay in diagnosis usually does not result in a more advanced stage [38, 39, 41]. Since in our study PD in seminoma patients did not influence the stage, thus the social quartile in seminoma did not determine the survival significantly. In the case of non-seminoma, the connection between delay in diagnosis and advanced disease is more straightforward [36] [37, 42, 43], and hence longer delay has resulted in decreased survival [39, 41, 44]. PD among our non-seminoma patients presented a more advanced stage, and based on our research, PD was significantly correlated with SEP, therefore social quartile and survival also had significant interdependence in non-seminoma patients. Although Marså et al., found no substantial social gradients in the incidence of or survival from testicular cancer in Denmark [45], in the study of Davies, TGCC patients with lower SEP had higher mortality rates [46]. Sun et al. reported from their multivariate analysis that low SEP groups had significantly higher cancer-related mortality rates, as well as higher collective mortality rates retrospectively [47]. This was in line with the findings of Davies et al. who reported a higher mortality rate among those educated at the vocational school level [46]. This has also been proved by the results reported in this research, as 10 out of 14 deceased patients were educated to that level, and 9 out of 10 belonged to the lowest quartile. The number of deceased patients was significantly higher among those who waited at least 1 year before the first doctor visit. According to our knowledge, there is no similar finding, published in our research area.

The survival rate among our patients (95.4%) was better compared to the Hungarian average (91–93%) [26, 48], and this underscores the importance of having the TGCC patients managed in a specialized center. It has been reported earlier that specialist centers demonstrate superior results to nonspecialist centers [49, 50].

Limitation of the study

Similar to other studies measuring patient-reported timelines, bias may occur when patients recall the exact delay period.

Conclusion

To our knowledge, this is the first study that prospectively evaluated the TGCC patients' subjective social status and objective socioeconomic position along with

survival, all other studies investigated them retrospectively, and indirectly. Mother's and patient education posed an influent aspect of PD; higher education led to a shorter PD period and hence better survival in non-seminoma patients.

Although early detection is key to better survival, with lower morbidity, delay in diagnosis in Hungary is still a serious problem. Both patients and physicians may contribute to this issue. Patient procrastination derives from ignorance, fear of cancer diagnosis, embarrassment, or fear of losing masculinity. Currently, the U.S. Preventive Services Task Force doesn't recommend mass screening for testicular cancer among asymptomatic males, but the American Cancer Society suggests testicular inspection as part of a male physical exam, for early detection. Meanwhile, physicians should also promote testicular self-examination, since testicular cancer awareness is low among young adults, which in turn contributes to diagnostic delays, especially among the most underprivileged communities. Based on our results, in Hungary, we should educate young men about the symptoms of testicular cancer and encourage them to turn to their physician at the first sign of a testicular lump, or other pathological changes. Besides, we must continue to educate health care providers, especially primary care physicians. On the other hand, it would be a good idea to incorporate the subject in the secondary school curriculum, as part of health education.

Abbreviations

AFP: Alpha-fetoprotein; CEE: Central and Eastern European countries; CT: Computed tomography; CSM: Cancer-specific mortality; EU: European Union; GU: Genito-urinary; HCG: Human chorionic gonadotropin; IGCC CG: International Germ Cell Cancer Collaborative Group; Km: Kilometer; LDH: Lactate dehydrogenase; OS: Overall survival; PD: Patient delay; SEP: Socioeconomic position; SSS: Subjective social status; St: Stage; TGCC: Testicular germ cell cancer; UICC: Union for International Cancer Control; WHO: World health organization

Supplementary Information

The online version contains supplementary material available at <https://doi.org/10.1186/s12889-021-11720-w>.

Additional file 1. SEP questionnaire (English version).

Acknowledgments

The authors are grateful for the valuable and insightful comments of the reviewers which considerably improved our paper.

Authors' contributions

Zs.K. and K.B. planned and conducted the research with the help of T.M. Statistical analysis was carried out by G.F. and Á.K. The SSS and SES questionnaires were created by A.T. Critical revision was carried out by A.L. All the remaining authors (L.G., F.Gy., O.H., G.K., T. D., E.L., K. N., T.Sz., M.Sz.) helped with data collection. All authors have read and approved the manuscript.

Funding

Not applicable.

Availability of data and materials

The datasets used and/or analysed during the current study are available from the corresponding author on reasonable request.

Declarations**Ethics approval and consent to participate**

The study was approved by the Hungarian National Scientific Ethical Committee (approval number: 44476–2/2016). All patients who were willing to participate signed informed consent.

Consent for publication

Not applicable.

Competing interests

We declare that we have no conflict of interest.

Author details

¹Department of Genitourinary Medical Oncology and Clinical Pharmacology, National Institute of Oncology, Ráth György u. 7-9, Budapest H-1122, Hungary. ²Faculty of Science, Eötvös Loránd University, Budapest, Hungary. ³Centre of Radiotherapy, National Institute of Oncology, Budapest, Hungary. ⁴Department of Surgical and Molecular Pathology, National Institute of Oncology, Budapest, Hungary. ⁵Boehringer Ingelheim RCV GmbH & Co. KG Branch Office Budapest, Budapest, Hungary. ⁶Department of Urology, Semmelweis University Budapest, Budapest, Hungary. ⁷Semmelweis University Faculty of Medicine, Budapest, Hungary. ⁸Adherencia.net Kft., Budapest, Hungary.

Received: 31 January 2021 Accepted: 2 September 2021

Published online: 19 September 2021

References

- Bray F, Ferlay J, Soerjomataram I, Siegel RL, Torre LA, Jemal A. Global cancer statistics 2018: GLOBOCAN estimates of incidence and mortality worldwide for 36 cancers in 185 countries. *CA Cancer J Clin*. 2018;68(6):394–424. <https://doi.org/10.3322/caac.21492>.
- Bray F, Richiardi L, Ekbom A, Pukkala E, Cuninkova M, Møller H. Trends in testicular cancer incidence and mortality in 22 European countries: continuing increases in incidence and declines in mortality. *Int J Cancer*. 2006;118(12):3099–111. <https://doi.org/10.1002/ijc.21747>.
- Bosetti C, Bertuccio P, Chatenoud L, Negri E, La Vecchia C, Levi F. Trends in mortality from urologic cancers in Europe, 1970–2008. *Eur Urol*. Jul. 2011; 60(1):1–15. <https://doi.org/10.1016/j.eururo.2011.03.047>.
- Levi F, La Vecchia C, Boyle P, Lucchini F, Negri E. Western and eastern European trends in testicular cancer mortality. *Lancet* (London, England). 2001;357(9271):1853–4. [https://doi.org/10.1016/S0140-6736\(00\)04973-4](https://doi.org/10.1016/S0140-6736(00)04973-4).
- Znaor A, Bray F. Thirty year trends in testicular cancer mortality in Europe: gaps persist between the east and west. *Acta Oncol* (Madr). 2012;51(7):956–8. <https://doi.org/10.3109/0284186X.2012.681701>.
- "WHO Mortality Database - WHO." [Online]. Available: <https://www.who.int/data/data-collection-tools/who-mortality-database>. [Accessed: 16-Oct-2020].
- Rosengren A, Wilhelmsen L. Cancer incidence, mortality from cancer and survival in men of different occupational classes. *Eur J Epidemiol*. 2004;19(6): 533–40. <https://doi.org/10.1023/b:ejep.0000032370.56821.71>.
- G. K. Singh, S. D. Williams, M. Siahpush, and A. Mulhollen, "Socioeconomic, rural-urban, and racial inequalities in US cancer mortality: Part I-All cancers and lung cancer and part II-Colorectal, prostate, breast, and cervical cancers," *J. Cancer Epidemiol.*, vol. 2011, 2011.
- Vagero D, Persson G. Cancer survival and social class in Sweden. *J Epidemiol Community Health*. 1987;41(3):204–9. <https://doi.org/10.1136/jech.41.3.204>.
- Smith GD, Leon D, Shipley MJ, Rose G. Socioeconomic differentials in cancer among men. *Int J Epidemiol*. 1991;20(2):339–45. <https://doi.org/10.1093/ije/20.2.339>.
- Abdel-Rahman O. Impact of socioeconomic status on presentation, treatment and outcomes of patients with pancreatic cancer. *J Comp Eff Res*. 2020;9(17):1233–41. <https://doi.org/10.2217/ce-2020-0079>.
- Abdel-Rahman O. Outcomes of non-metastatic colon cancer patients in relationship to socioeconomic status: an analysis of SEER census tract-level socioeconomic database. *Int J Clin Oncol*. Dec. 2019;24(12):1582–7. <https://doi.org/10.1007/s10147-019-01497-9>.
- Adler NE, Epel ES, Castellazzo G, Ickovics JR. Relationship of subjective and objective social status with psychological and physiological functioning: preliminary data in healthy, white women. *Health Psychol*. 2000;19(6):586–92. <https://doi.org/10.1037/0278-6133.19.6.586>.
- Adler N, Singh-Manoux A, Schwartz J, Stewart J, Matthews K, Marmot MG. Social status and health: a comparison of British civil servants in Whitehall-II with European- and African-Americans in CARDIA. *Soc Sci Med*. 2008;66(5): 1034–45. <https://doi.org/10.1016/j.socscimed.2007.11.031>.
- Wolff LS, Subramanian SV, Acevedo-Garcia D, Weber D, Kawachi I. Compared to whom? Subjective social status, self-rated health, and referent group sensitivity in a diverse US sample. *Soc Sci Med*. 2010;70(12):2019–28. <https://doi.org/10.1016/j.socscimed.2010.02.033>.
- Ostrove JM, Adler NE, Kuppermann M, Washington AE. Objective and subjective assessments of socioeconomic status and their relationship to self-rated health in an ethnically diverse sample of pregnant women. *Health Psychol*. 2000;19(6):613–8. <https://doi.org/10.1037/0278-6133.19.6.613>.
- Operario D, Adler NE, Williams DR. Subjective social status: reliability and predictive utility for global health. *Psychol Health*. Apr. 2004;19(2):237–46. <https://doi.org/10.1080/08870440310001638098>.
- G. M. W. C. Brierley J, Ed., TNM classification of malignant tumours, Eighth edition. John Wiley & Sons, Inc, Chichester, West Sussex, UK ; Hoboken, NJ, 2016.
- G. M. Mead and S. P. Stenning, "The International Germ Cell Consensus Classification: A new prognostic factor-based staging classification for metastatic germ cell tumours," *Clinical Oncology*, vol. 9, no. 4. Elsevier Ltd, pp. 207–209, 1997.
- J. Oldenburg et al., "Testicular seminoma and non-seminoma: ESMO clinical practice guidelines for diagnosis, treatment and follow-up," *Ann. Oncol.*, vol. 24, no. SUPPL6, 2013.
- "MacArthur SES & Health Network." [Online]. Available: <https://macses.ucsf.edu/>. [Accessed: 27-Aug-2021].
- E. Goodman, N. E. Adler, I. Kawachi, A. L. Frazier, B. Huang, and G. A. Colditz, "Adolescents' perceptions of social status: development and evaluation of a new indicator," *Pediatrics*, vol. 108, no. 2, 2001.
- Singh-Manoux A, Adler NE, Marmot MG. Subjective social status: its determinants and its association with measures of ill-health in the Whitehall II study. *Soc Sci Med*. Mar. 2003;56(6):1321–33. [https://doi.org/10.1016/S0277-9536\(02\)00131-4](https://doi.org/10.1016/S0277-9536(02)00131-4).
- Bojer A, Erdei V, Vörös C, "(2017) Mikrocenzus 2016, 4. Iskolázottsági adatok"
- Kopp M, Skrabski Á, Réthelyi J, Kawachi I, Adler NE. Self-rated health, subjective social status, and middle-aged mortality in a changing society. *Behav Med*. 2004;30(2):65–72. <https://doi.org/10.3200/BMED.30.2.65-72>.
- "Hungarian National Cancer Registry." [Online]. Available: <http://ghdx.healthdata.org/organizations/national-cancer-registry-hungary-10>.
- "Area Socioeconomic Variations in U.S. Cancer 1975–1999 - SEER Publications." [Online]. Available: <https://seer.cancer.gov/archive/publications/ses/>. [Accessed: 17-Oct-2020].
- Curhan KB, Levine CS, Markus HR, Kitayama S, Park J, Karasawa M, et al. Subjective and objective hierarchies and their relations to psychological well-being: a U.S./Japan comparison. *Soc Psychol Personal Sci*. Nov. 2014; 5(8):855–64. <https://doi.org/10.1177/1948550614538461>.
- Goldman N, Cornman JC, Chang MC. Measuring subjective social status: a case study of older Taiwanese. *J Cross Cult Gerontol*. Mar. 2006;21(1–2):71–89. <https://doi.org/10.1007/s10823-006-9020-4>.
- Garza JR, Glenn BA, Mistry RS, Ponce NA, Zimmerman FJ. Subjective social status and self-reported health among US-born and immigrant Latinos. *J Immigr Minor Health*. Feb. 2017;19(1):108–19. <https://doi.org/10.1007/s10903-016-0346-x>.
- Schottenfeld D, Warshauer ME, Sherlock S, Zauber AG, Leder M, Payne R. The epidemiology of testicular cancer in young adults. *Am J Epidemiol*. 1980;112(2):232–46. <https://doi.org/10.1093/oxfordjournals.aje.a112989>.
- Swerdlow AJ, Douglas AJ, Huttly SRA, Smith PG. Cancer of the testis, socioeconomic status, and occupation. *Br J Ind Med*. 1991;48(10):670–4. <https://doi.org/10.1136/oem.48.10.670>.
- Prener A, Hsieh CC, Engholm G, Trichopoulos D, Jensen OM. Birth order and risk of testicular cancer. *Cancer Causes Control*. 1992;3(3):265–72. <https://doi.org/10.1007/BF00124260>.
- L. C. Richardson, A. J. Neri, E. Tai, and J. D. Glenn, "Testicular cancer: A narrative review of the role of socioeconomic position from risk to

- survivorship," *Urologic Oncology: Seminars and Original Investigations*, vol. 30, no. 1. NIH Public Access, pp. 95–101, 2012.
35. J. W. Moul, "Timely Diagnosis of Testicular Cancer," *Urologic Clinics of North America*, vol. 34, no. 2. *Urol Clin North Am*, pp. 109–117, 2007.
 36. Moul JW, Paulson DF, Dodge RK, Walther PJ. Delay in diagnosis and survival in testicular cancer: impact of effective therapy and changes during 18 years. *J Urol*. 1990;143(3):520–3. [https://doi.org/10.1016/S0022-5347\(17\)40007-3](https://doi.org/10.1016/S0022-5347(17)40007-3).
 37. Bosl GJ, Goldman A, Lange PH, Vogelzang NJ, Fraley EE, Levitt SH, et al. Impact of delay in diagnosis on clinical stage of testicular cancer. *Lancet*. Oct. 1981;318(8253):970–3. [https://doi.org/10.1016/S0140-6736\(81\)91165-X](https://doi.org/10.1016/S0140-6736(81)91165-X).
 38. Dieckmann K-P, Becker T, Bauer HW. Testicular tumors: presentation and role of diagnostic delay. *Urol Int*. 1987;42(4):241–7. <https://doi.org/10.1159/000281948>.
 39. Post GJ, Belis JA. Delayed presentation of testicular tumors. *South Med J*. 1980;73(1):33–5. <https://doi.org/10.1097/00007611-198001000-00013>.
 40. Toklu C, Ozen H, Sahin A, Rastadoskouee M, Erdem E. Factors involved in diagnostic delay of testicular cancer. *Int Urol Nephrol*. 1999;31(3):383–8. <https://doi.org/10.1023/A:1007134421608>.
 41. Sandeman TF. Symptoms and early management of germinal tumours of the testis. *Med J Aust*. 1979;2(6):281–4. <https://doi.org/10.5694/j.1326-5377.1979.tb125707.x>.
 42. Thornhill JA, Fennelly JJ, Kelly DG, Walsh A, Fitzpatrick JM. Patients' delay in the presentation of testis Cancer in Ireland. *Br J Urol*. May 1987;59(5):447–51. <https://doi.org/10.1111/j.1464-410X.1987.tb04844.x>.
 43. Chilvers CED, Saunders M, Bliss JM, Nicholls J, Horwich A. Influence of delay in diagnosis on prognosis in testicular teratoma. *Br J Cancer*. 1989;59(1):126–8. <https://doi.org/10.1038/bjc.1989.25>.
 44. Prout GR, Griffin PP. Testicular tumors: delay in diagnosis and influence on survival. *Am Fam Physician*. 1984;29(5):205–9.
 45. Marså K, Johnsen NF, Bidstrup PE, Johannesen-Henry CT, Friis S. Social inequality and incidence of and survival from male genital cancer in a population-based study in Denmark, 1994–2003. *Eur J Cancer*. 2008;44(14):2018–29. <https://doi.org/10.1016/j.ejca.2008.06.012>.
 46. Davies JM. Testicular cancer in England and Wales: some epidemiological aspects. *Lancet*. Apr. 1981;317(8226):928–32. [https://doi.org/10.1016/S0140-6736\(81\)91625-1](https://doi.org/10.1016/S0140-6736(81)91625-1).
 47. Sun M, Abdollah F, Liberman D, Abdo A', Thuret R, Tian Z, et al. Racial disparities and socioeconomic status in men diagnosed with testicular germ cell tumors: a survival analysis. *Cancer*. Sep. 2011;117(18):4277–85. <https://doi.org/10.1002/cncr.25969>.
 48. "Hungarian Central Statistical Office." [Online]. Available: <http://www.ksh.hu/?lang=en>. [Accessed: 11-Jun-2021].
 49. Collette L, Sylvester RJ, Stenning SP, Fossa SD, Mead GM, de Wit R, et al. Impact of the treating institution on survival of patients with 'poor-prognosis' metastatic nonseminoma. *J Natl Cancer Inst*. 1999;91(10):839–46. <https://doi.org/10.1093/jnci/91.10.839>.
 50. E. J. Feuer, J. Sheinfeld, and G. J. Bosl, "Does size matter? Association between number of patients treated and patient outcome in metastatic testicular cancer," *Journal of the National Cancer Institute*, vol. 91, no. 10. Oxford University Press, pp. 816–818, 1999.

Publisher's Note

Springer Nature remains neutral with regard to jurisdictional claims in published maps and institutional affiliations.

Ready to submit your research? Choose BMC and benefit from:

- fast, convenient online submission
- thorough peer review by experienced researchers in your field
- rapid publication on acceptance
- support for research data, including large and complex data types
- gold Open Access which fosters wider collaboration and increased citations
- maximum visibility for your research: over 100M website views per year

At BMC, research is always in progress.

Learn more biomedcentral.com/submissions

