

RESEARCH ARTICLE

Open Access



Effect of different resumption strategies to flatten the potential COVID-19 outbreaks amid society reopens: a modeling study in China

Yong Ge^{1,2*†}, Wen-Bin Zhang^{1,2†}, Jianghao Wang¹, Mengxiao Liu^{1,2}, Zhoupeng Ren¹, Xining Zhang^{1,2}, Chenghu Zhou^{1,2*} and Zhaoxing Tian³

Abstract

Background: The effect of the COVID-19 outbreak has led policymakers around the world to attempt transmission control. However, lockdown and shutdown interventions have caused new social problems and designating policy resumption for infection control when reopening society remains a crucial issue. We investigated the effects of different resumption strategies on COVID-19 transmission using a modeling study setting.

Methods: We employed a susceptible-exposed-infectious-removed model to simulate COVID-19 outbreaks under five reopening strategies based on China's business resumption progress. The effect of each strategy was evaluated using the peak values of the epidemic curves vis-à-vis confirmed active cases and cumulative cases. Two-sample t-test was performed in order to affirm that the pick values in different scenarios are different.

Results: We found that a hierarchy-based reopen strategy performed best when current epidemic prevention measures were maintained save for lockdown, reducing the peak number of active cases and cumulative cases by 50 and 44%, respectively. However, the modeled effect of each strategy decreased when the current intervention was lifted somewhat. Additional attention should be given to regions with significant numbers of migrants, as the potential risk of COVID-19 outbreaks amid society reopening is intrinsically high.

Conclusions: Business resumption strategies have the potential to eliminate COVID-19 outbreaks amid society reopening without special control measures. The proposed resumption strategies focused mainly on decreasing the number of imported exposure cases, guaranteeing medical support for epidemic control, or decreasing active cases.

Keywords: Resumption strategy, Hierarchy, COVID-19, SEIR model, China

* Correspondence: gey@lreis.ac.cn; zhouch@lreis.ac.cn

†Yong Ge and Wenbin Zhang contributed equally to this work.

¹State Key Laboratory of Resources and Environmental Information Systems, Institute of Geographic Sciences & Natural Resources Research, Chinese Academy of Sciences, Beijing 100101, China

Full list of author information is available at the end of the article



© The Author(s). 2021 **Open Access** This article is licensed under a Creative Commons Attribution 4.0 International License, which permits use, sharing, adaptation, distribution and reproduction in any medium or format, as long as you give appropriate credit to the original author(s) and the source, provide a link to the Creative Commons licence, and indicate if changes were made. The images or other third party material in this article are included in the article's Creative Commons licence, unless indicated otherwise in a credit line to the material. If material is not included in the article's Creative Commons licence and your intended use is not permitted by statutory regulation or exceeds the permitted use, you will need to obtain permission directly from the copyright holder. To view a copy of this licence, visit <http://creativecommons.org/licenses/by/4.0/>. The Creative Commons Public Domain Dedication waiver (<http://creativecommons.org/publicdomain/zero/1.0/>) applies to the data made available in this article, unless otherwise stated in a credit line to the data.

Background

Cases of pneumonia with unknown origins were detected in Wuhan, China, in late December 2019 [1]. WHO announced the epidemic as an international public health emergency, naming it COVID-19 [2, 3]. Although China has used a series of non-pharmaceutical strategies (including the Wuhan travel ban on January 23, 2020 [4–6]) to limit the epidemic, the high transmission ability of the coronavirus has led to secondary outbreaks worldwide [7–10]. Governments and the general public have expressed significant concern regarding these outbreaks and, at the end of May 2020, over six million confirmed cases and at last 300 thousand deaths have occurred due to this disease worldwide [11].

Contrasting the explicit life-threatening nature of COVID-19, non-pharmaceutical measures to curb the pandemic have also indirectly influenced people's lives. China has kept its confirmed active COVID-19 cases at a mild order of magnitude, becoming the best example of pandemic control [12]. The rapid increase of confirmed cases in many other countries has driven their governments to set various strict pandemic prevention measures [13–16]. Such policies (e.g., lockdown and shutdown) have urged hundreds of millions of people to stay at home, creating new social problems (e.g., food shortage, increased unemployment, economic downturn) [17–21]. Given such circumstances, policymakers must cope with the tradeoff between strict epidemic preventions and social operation to address COVID-19 transmission and possible future outbreaks.

Although COVID-19 infection has been eased with lockdown measures, some societies have suspended operations consequently. China has reported a year-on-year fall in economic output for the first time since 1992, when the National Bureau of Statistics started releasing GDP growth numbers quarterly [22]. China's service industry reported a 5.2% fall in value-added due to lockdown measures [23]. Despite this, the Chinese economy has recovered well with factories reopening and some workers returning to cities for work after the extended break caused by COVID-19 [24]. In addition, many other countries have also unveiled plans to reopen their societies, such as the US suggesting its states determine their own tactics according to local situations and proposing a phased strategy [25]. The UK has also unveiled a three-step plan to reopen its society [26]. However, these phased plans differ regarding the theme of each stage. The US has prioritized industries (such as catering, entertainment, and religion) during its first phase, while the UK has suggested those unable to work from home should return to the workplace during the first step. These differences are caused by various national or cultural circumstances, yet both plans

emphasize that control measures (e.g., social distancing) should be maintained.

Investigating the impacts of the different business resumption strategies on COVID-19 transmission can provide critical information for reopening a society. In this study, we shall use observed epidemic data from Beijing to study five economic strategies in terms of China's business resumption: direct reopening (DR), risk-based reopening (RR), order-based reopening (OR), theme-based reopening (TR) and a hierarchical reopening (HR). To model outbreaks under different strategies, the susceptible-exposed-infectious-removed (SEIR) model was employed in the simulation. The model parameters in our study are calibrated by the observed epidemic data in Beijing with a reproductive number of 2.2, which is the evaluation of reproductive number for the initial COVID-19 outbreak in Wuhan. For stronger context, three reproductive numbers (1.4, 2.2, and 3.9) were compared, to represent stricter measures (1.4), and the partial lifting of current measures (3.9). The effects of each strategy were evaluated using the peak values of their epidemic curves vis-à-vis confirmed active cases and cumulative cases. Besides, spatiotemporal heterogeneity exists in the distribution of COVID-19 in worldwide [27, 28]. Several studies confirm that the spread of COVID-19 is location dependent [29, 30]. At different stages of resuming work, population flow is different driving spatiotemporal distribution of COVID-19 [31–33]. Thus, each district of Beijing is studied based on the local conditions.

The analysis of the work-resumption patterns documented in this article focused primarily on China. In fact, China's financial data saw a considerable rebound in March 2020, with business resumption nearly complete while the pandemic remains under control [34–36]. Therefore, China can provide accurate information on the impacts of socioeconomic activities resumed after COVID-19 transmission. This study seeks to provide insight into the impacts of business resumption on COVID-19 transmission, producing valuable information for other regions awaiting economic recovery in a post-pandemic world.

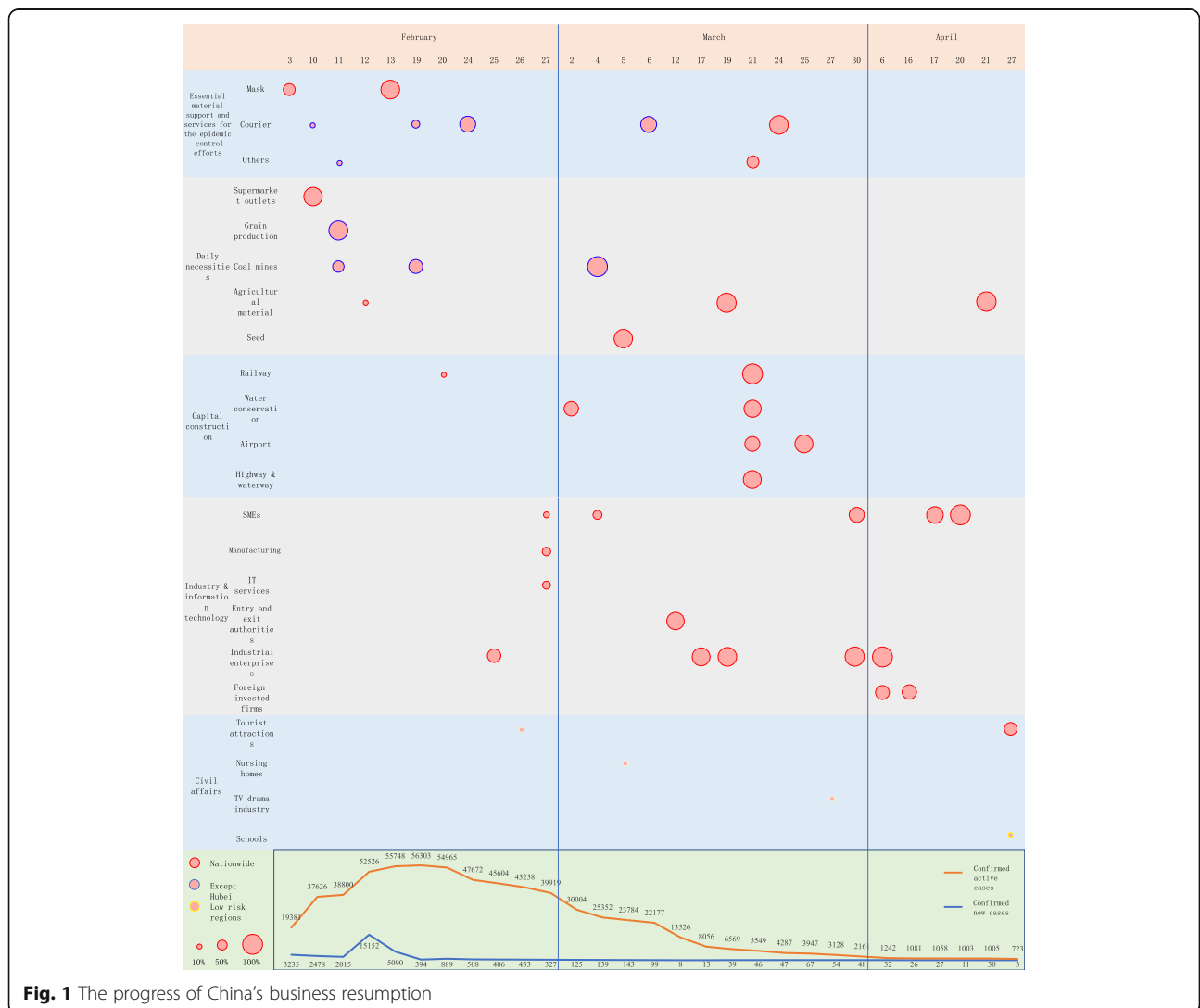
Methods

Resumption strategies

To our knowledge, few studies [37] discussed how reopening plans affect COVID-19 dynamics, while many researchers focused on the necessary interventions after reopening [38–41]. Despite lackluster GDP numbers, economic activities have been recovering in China since early March, as virus transmission has been mostly under control since then [24]. Resumption progress has been seen in monthly indicators that include industrial production, retail sales, and

fixed-asset investment. China reopened its economy chronologically using five themes: Essential material support and services for epidemic control efforts, daily necessities, capital construction, industry, and civil affairs (see the [supplementary](#)). The resumption progress of the first theme was reported on February 3, 2020, with China’s domestic mask producers resuming 60% of production capacity as the epidemic outbreak was developing. The other themes reported subsequently according to outbreak circumstances. For instance, civil affairs resumed when the epidemic had been somewhat curbed. Figure 1 demonstrates the progress of China’s business resumption. The resumption ratio is characterized by circle size, and the resumption extent is depicted by circle envelopes. Reviewing China’s progress allows resumption strategies to be summarized in five categories for exploring the epidemic transmission of COVID-19 in the reopening of society:

- *Direct-based resumption (DR)* The most straightforward strategy where the whole working population returns to the workplace together, and epidemic transmission is associated with no further disturbances.
- *Risk-based resumption (RR)* In this strategy, only people living in low-and-moderate-risk regions can return to work. Such regions are defined as somewhere the COVID-19 incidence possesses a controlled level. In contrast to DR, the ratio of exposed cases to migrants decreased, due to the low COVID-19 incidence.
- *Order-based resumption (OR)* A more cautious approach would be to have people return to work in batches instead of all at once during the initial stage. We simplified this strategy by allowing one quarter of total migrants to return to work with a second quarter returning after three weeks. We did not distinguish the occupations of those resuming work.



- *Theme-based resumption (TR)* Considering epidemic intervention, essential material support and services for epidemic control usually reopen first. After that, migrants who returned to work are assumed to have a reduced COVID-19 incidence because of sufficient medical material and services support. After three weeks, daily necessities reopen followed by infrastructure construction, industry, and civil affairs at last.
- *Hierarchy-based resumption (HR)* Comprehensively, TR allows migrants return to work should be of low- and moderate-risk regions, just as RR does. In this way, all migrants possess a lower COVID-19 incidence, which contrasts with TR, regardless of occupation. For each theme, we separated the corresponding population equally into three groups with each group returning to work on subsequent weeks (OR).

Modeling analysis

We captured the epidemic spread amidst work resumption based on SEIR dynamics [42], categorizing infections as I_u and I_d subjects. Each infection detected is assumed to be wholly hospitalized, setting I_d at zero for producing further transmission:

$$\begin{aligned}
 dS &= \alpha M_t - kbSI_u/N \\
 dE &= (1 - \alpha)M_t + kbSI_u/N - rE \\
 dI_u &= (1 - w)rE - (v + m)I_u \\
 dI_d &= wrE - (v + m)I_d \\
 dR &= v(I_u + I_d) \\
 dead &= m(I_u + I_d)
 \end{aligned}
 \tag{1}$$

where M_t is the number of migrants return to work at day t , α is the ratio of susceptible in M_t , and N represents the total population. The basic reproductive number $R_0 = kb/(w + v + m)$ when there is no intervention, allowing k to represent the daily contact number per capita, and b to represent the probability of getting infected by per contact [43]. In our model, we replaced kb with $R_0(w + v + m)$, because the intervention is characterized by w . As epidemic prevention measures are always positive to epidemic control, the model is not shaped by any control measures. Those returning to work are deemed asymptomatic due to related measures and are isolated from residents, so the only imported exposed cases come from returned workers, and the susceptible population remained limited to health workers. Therefore, epidemic evolution depended on resuming patterns of socioeconomic activities with a particular transmission model.

We ran 500 simulations for each strategy and imported the exposed cases from a Poisson distribution with the expectation that exposed cases corresponded

with the defined ratio for each stage. The model was calibrated using epidemic data from Beijing (cumulative cases, recoveries, and deaths) with a fixed $R_0 = 2.2$, where the daily detection rate reflected the epidemic prevention measures. The vectors of peak values for the five reopening strategies, obtained by the 500 simulations, are examined by a two-sample t-test with 95% confidence to assert their difference. For generalization, we assumed the imported exposed cases were proportional to the population of returned workers with a basic ratio of 0.1%, wherein the population of migrant residents evaluated the population of returned workers. Then, DR can be modelled by setting $\alpha = 0.1\%$, and M_t is 7.6 million at day 1 and 0 for the other days. The ratio for low- and moderate-risk regions was set to 70% of the basic ratio, where RR can be represented by setting $\alpha = 0.7 * 0.1\% = 0.07\%$ and M_t is the same as it in DR. The restarting of essential material support and services for the epidemic control effect could further reduce COVID-19 incidence by 20%. In consequence, TR is modelled by setting $\alpha = 0.1\%$ for the 1st day and $\alpha = 0.08\%$ for the remained days due to sufficient supplies of PPE, and M_t is 1.14, 1.52, 2.28, 1.52 and 1.14 million at the 1st, 22nd, 43rd, 64th and 85th day, for the reopening of essential material support and services for epidemic control, daily necessities, infrastructure construction, industry and civil affairs respectively. For the remained two strategies, OR is modelled by setting $\alpha = 0.1\%$, and M_t is 0.5 million for the first days of the first 15 weeks. That is, we assume that migrants are average returned batch-by-batch within 15 weeks. To this end, HR is modelled by setting $\alpha = 0.07\%$ for the first three weeks and $\alpha = 0.056\%$ for the remained days, and M_t is the same as it in TR, except the imported migrants are average returned as in OR. The parameters of the model are given in Table 1.

Results

Overall, as the reproductive number increased, the risk of the virus spreading increased under all five proposed business resumption strategies. DR represented natural outbreaks leading to most severe outbreak with the corresponding transmission being set as the baseline. Among the other four resumption strategies, HR was the most effective way to reduce COVID-19 incidence for reproductive numbers 1.4 and 2.2 (see Fig. 2). Given a sizeable reproductive number of 3.9, the business resumption strategy had little effect.

Confirmed active cases described how many infections were hospitalized, indicating strain on local medical services. The whole four strategies (RR, TR, OR and HR) performed well given a low reproductive number, while their effects decreased as reproductive numbers increased. Cumulative cases represented infected subjects

Table 1 Parameters for the model

	Explanation	Value	Reference
R_0	The basic reproductive number	2.2 (95% CI, 1.4 to 3.9)	Li et al. [44]
$1/r$	The mean incubation period	5.2	Lauer et al. [45] Backer et al. [46]
w	The daily infection detection rate	0.5762 (95% CI, 0.2655 to 0.8870)	Calibrated by epidemic data in Beijing
v	The daily infection recovery rate	0.0417 (95% CI, 0.0363 to 0.0471)	Calibrated by epidemic data in Beijing
m	The daily death rate	0.0009	Wang et al. [47]

including imported exposed cases. Given consistent epidemic prevention measures, OR could not decrease the cumulative cases (Fig. 2). Our simulation set February 20, 2020, as the day for reopening society. With a reproductive number of 1.4, DR and RR controlled transmission within 1 month (by early April 2020), while OR, TR and HR required 4 months (up to late June) to control the epidemic. Given a reproductive number of 2.2, each strategy required roughly 9 months (up to late November of 2020) to control the epidemic. A reproductive

number of 3.9 saw each strategy needing about 5 months (until early July 2020) to control the epidemic. While lifting the control measures ($R_0 = 3.9$) could lead to a shorter COVID-19 life than maintaining current control measures ($R_0 = 2.2$), the height of the peak for confirmed active cases (hospitalized) under each strategy was considerably higher than that of $R_0 = 2.2$, indicating the COVID-19 curve was not flattened.

Four business resumption strategies led to reduced COVID-19 incidence with differing effects, as shown in

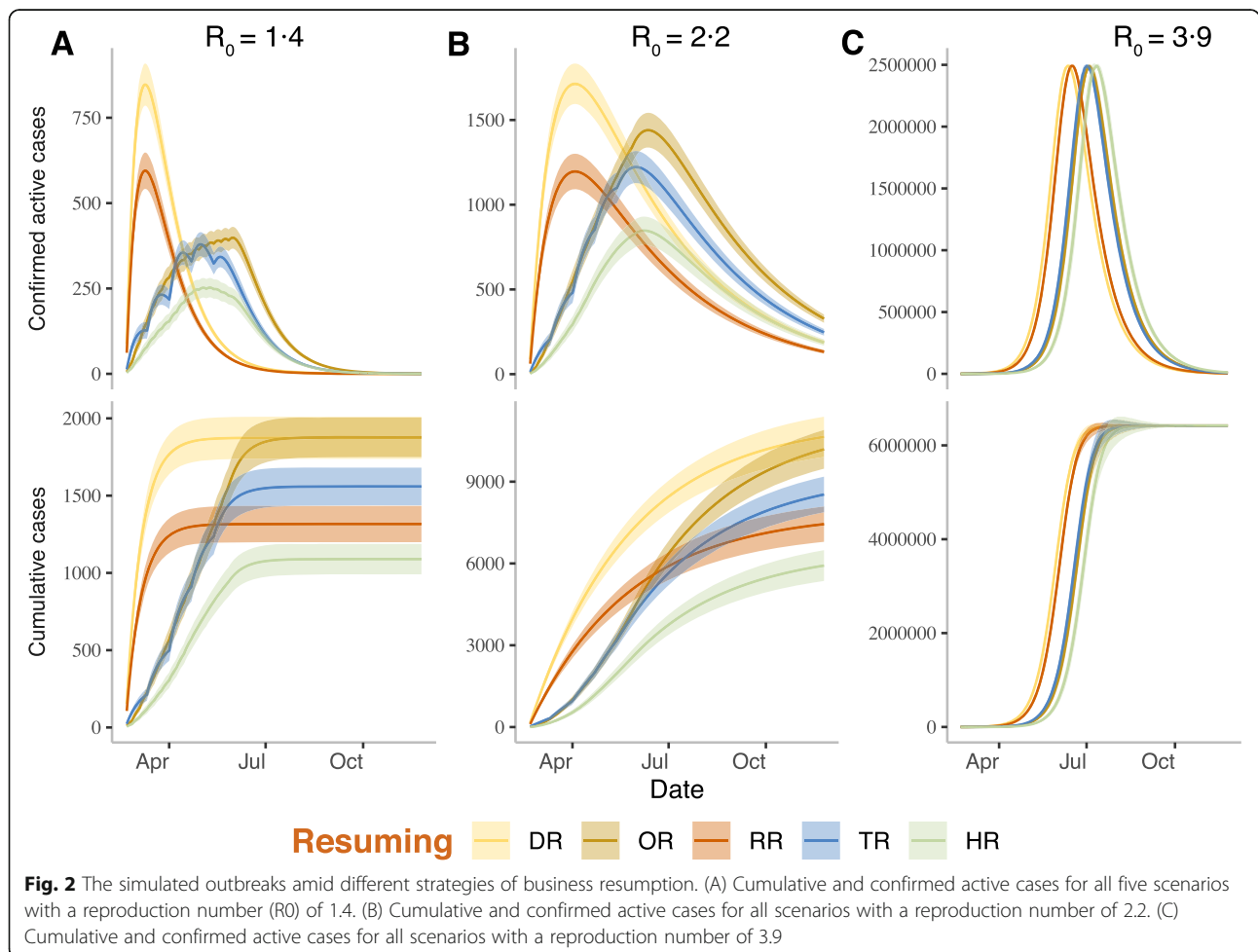
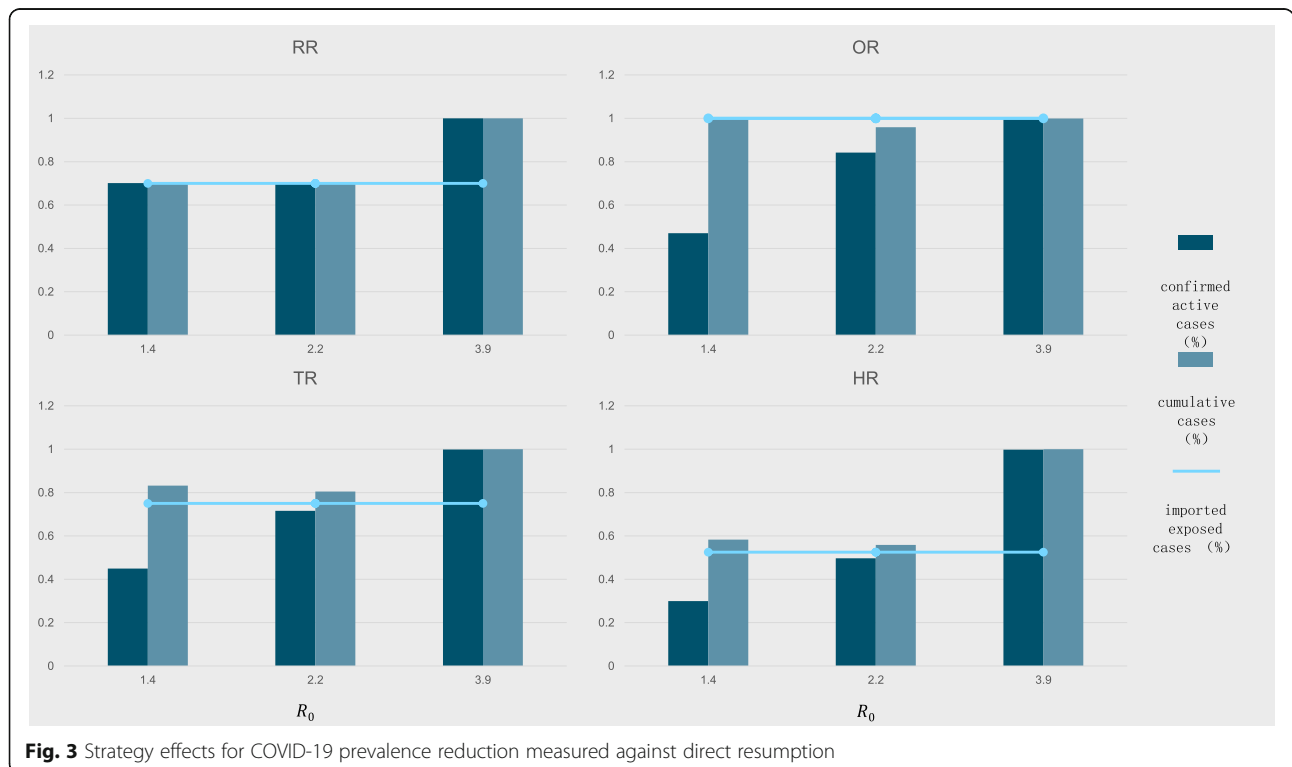


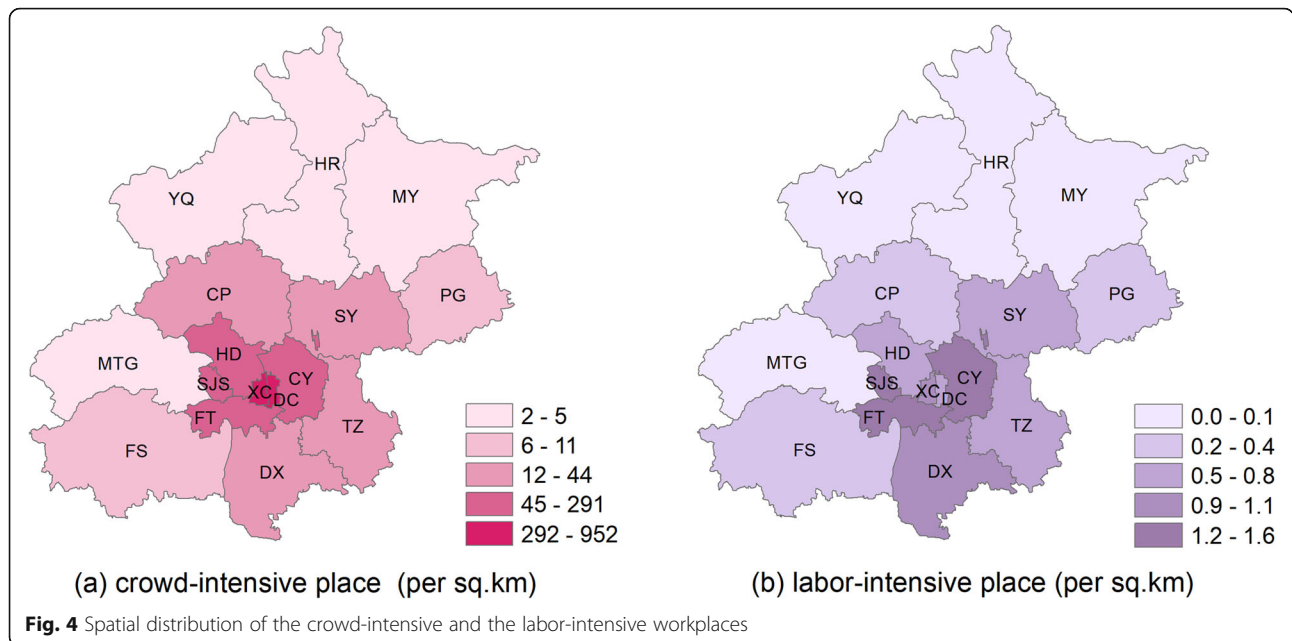
Fig. 3. In the simulation, RR eased the epidemic by decreasing the total imported exposed cases according to regional COVID-19 incidence (i.e., 70% of the DR strategy). OR eased the epidemic by reducing daily infections and, consequently, the total number of imported exposed cases remained identical to DR. TR functioned equivalently to OR as it also asked people to return to work in batches by occupation. As this strategy called epidemic prevention occupations to return first, it was assumed that regional COVID-19 incidence would decrease accordingly. Therefore, TR imported 75% of exposed cases compared to DR and, to this end, HR combined the above three strategies to grant it the lowest number of imported exposed cases (52.5% of DR).

With stricter control measures ($R_0 = 1.4$), RR reduced peak numbers of confirmed active and cumulative cases to about 70% of DR. OR only reduced cumulative cases to 47% of DR. TR reduced peak numbers of confirmed active and cumulative cases to about 44.9 and 83.2% of DR, respectively. HR again achieved the greatest reductions of 29.9% confirmed active cases and 58.3% cumulative cases to DR. When the reproductive number rose to 2.2, all strategy effects decreased slightly. HR still performed the most effectively, reducing peak numbers of confirmed active and cumulative cases to 49.64 and 55.88% of DR, respectively. As the sizeable reproductive number reached 3.9, all strategies only had slight COVID-19 prevalence reduction effects with all peak numbers being comparable to DR.

For each reproductive number, the heights presented the ratio of peak numbers between each strategy and DR, with respect to confirmed active, cumulative and imported exposed cases. The RR, OR, TR, and HR had 70, 100, 75 and 52.5%, respectively, of imported exposed cases compared to DR. Given a reproductive number of 1.4, peak numbers of confirmed active and cumulative cases for RR were about 70% of DR, while OR, TR, and HR reached (47, 100%), (44.9, 83.2%) and (29.9, 58.3%), respectively. With a reproductive number of 2.2, HR performed best with (49.64, 55.88%). With a reproductive number of 3.9, all strategies had little effect as all ratios were nearly 100%, showing a failure to reduce outbreaks with smaller numbers of imported exposed cases.

In addition to the resumption strategy, different type of workplaces associated with different risk of secondary outbreaks of COVID-19 amid society reopens [48]. In general, the crowd-intensive place and the labor-intensive-place possess a higher risk. The crowd-intensive workplace refers to somewhere population flow is large, such as shopping mall, catering, and office buildings. While the labor-intensive workplace indicates someplace the labor force is, to some extent, isolated from the external environment. The situation of Beijing is illustrated in Fig. 4, the crowd-intensive places are centralized in Xicheng Districts (XC) and Dongcheng District (DC), and radioactively diffuse to the periphery; and the labor-intensive places are positioned in the





southern Beijing, especially in Shijingshan District (SJS), Fengtai District (FT), and Chaoyang District (CY). Much attention should be paid to the above districts due to their intrinsic risk of the secondary outbreaks of COVID-19 to reopen society.

Moreover, the effects of strategies in this study were not sensitive to population scaling. Districts with larger populations are intrinsically high-risk regions as an economy reopens. It is reasonable to study the impact of local migrant resident populations on different strategy effects [49]. Therefore, we generated COVID-19 transmission results for three districts of Beijing, with small (48,000), moderate (306,000), and large (1,579,000) migrant residents with a reproductive number of 2.2 (Fig. 5) [50]. Under three graduated population scales, corresponding to Yanqing District (YQ), Fangshan District (FS) and Chaoyang District (CY) respectively, the cumulative cases and confirmed active cases affected by hierarchy-based resumption (HR) with a reproductive number of 2.2 are shown on the left of the Fig. 5. The effect of HR strategy is comparable for all three districts.

Discussion and conclusions

We examined effects of different resumption strategies to reduce COVID-19 prevalence amid societal reopening, capturing corresponding strategic influences on epidemic transmission. We found that OR, RR, TR and HR strategies could weaken an epidemic in terms of confirmed active cases with current epidemic prevention measures in Beijing, wherein HR had the strongest effects. The lowest reproductive number in this study, 1.4, represented stricter epidemic prevention measures than

those used for model calibration, while the highest reproductive number, 3.9, represented less intervention. Strategic effects decreased as epidemic prevention measures were lifted.

Our model did not include additional epidemic prevention measures that might have decreased COVID-19 transmission capability to increase strategic effectiveness. The baseline reproductive number of our model was the first estimated reproductive number provided by Wuhan’s epidemic data. We also modified the standard SEIR model by dividing those categorized as infectious further into I_u and I_d categories, with I_d representing infections that were detected and subsequently hospitalized to isolate them and eliminate their transmission ability. Other parameters were calibrated using Beijing epidemic data, placing local control measures within these parameters. Adjusting the reproductive number employed in the simulation represented differing intervention states.

As one of the biggest cities in China, Beijing has 21.5 million residents, 7.6 million of which are domestic migrants [50]. Such hosts of imported workers make Beijing a high-risk region in terms of resuming work. For Beijing districts though, significant heterogeneity exists in population distribution and local socioeconomic factors. Our results show that districts with a high migrant density, such as the Chaoyang District, would witness more confirmed active cases and face higher risks of secondary outbreak. However, such districts may not become high-risk regions as the risk of resuming work is also based on each district population’s spatial heterogeneity characteristics, socioeconomic factors,

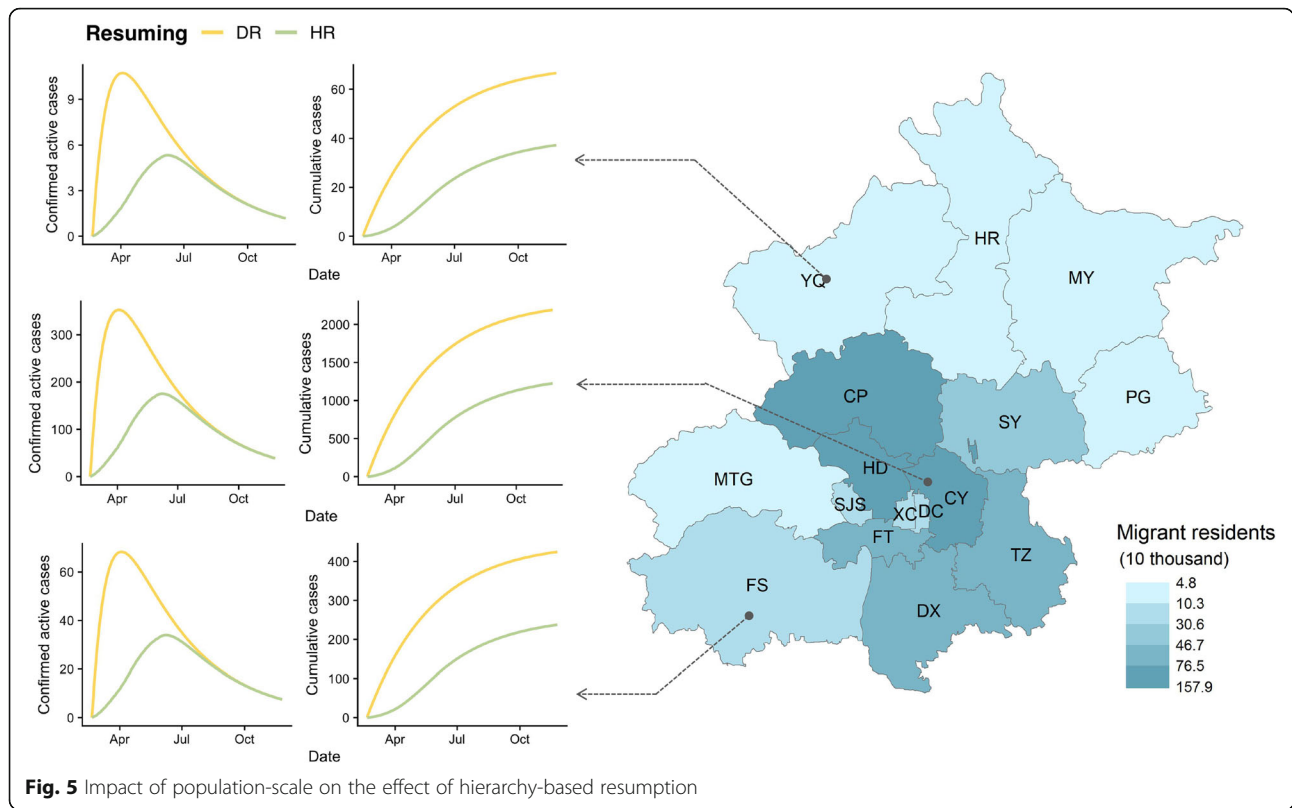


Fig. 5 Impact of population-scale on the effect of hierarchy-based resumption

prevention measures, and medical capacity. For example, most residents will stay home for much of the time if a district has few open work units.

Although China has almost completed its business resumption, there has not yet been a secondary COVID-19 outbreak. To characterize each strategic effect, we simply assumed one exposed case per ten thousand returned people. Only exposed cases were imported due to strict travel restrictions and control measures in place to prevent those with symptoms going to work. In this way, projected infections may not be consistent with China’s situation, but our simulations have shown that China’s business resumption model can still reduce COVID-19 prevalence with current control measures. Given small to medium reproduction numbers, a business resumption strategy has significant influence on COVID-19 prevalence reduction, particularly HR of socioeconomic activities. When reproduction increased to a sizeable number, business resumption strategy had a negligible effect. Under the circumstance, additional measures are needed to prevent the epidemic rebound when orderly resuming work and production and reopening schools. The Chinese government has improved measures and mechanisms that integrate emergency and regular epidemic prevention and control [51], including (1) China has pushed forward work and

production resumption and school reopening in a gradual, orderly and adaptive manner, (2) China has adopted dynamic health condition verification systems, (3) China is enlarging testing scales and (4) China has reinforced epidemic prevention guidance for key places, key units and key populations. Besides, stringent measures should be taken by local governments in different regions based on the local conditions of each district. Regions with crowd-intensive places, such as shopping mall, catering, and office buildings, should pay special attention to strengthening air circulation and cleaning and disinfection. In labor-intensive workplace, daily temperature monitoring is encouraged as well as strict control the problem of excessive numbers of workers in confined rooms.

Our study indicates that societal reopening strategies can support epidemic control without further special control measures. As returning to work is an urgent need for several countries, this study could provide valuable insights into business resumption plans. Our model could also be calibrated according to national situations to test proposed plans based on local situation. However, migrants of different occupations are commonly placed in isolated workplaces, while our simulation simply placed them together. Transmission abilities may also vary with occupation, changing model parameters beyond our study’s limits.

Abbreviation

COVID-19: Coronavirus Disease

Supplementary Information

The online version contains supplementary material available at <https://doi.org/10.1186/s12889-021-10624-z>.

Additional file 1.**Acknowledgements**

Not applicable.

Authors' contributions

GY and ZCH designed the study. ZWB and RZP conducted the experiments. ZWB, TZX and LMX analyzed the experimental results. ZWB wrote the manuscript. WJH and ZXN improved the manuscript. The authors read and approved the final manuscript.

Funding

This study was funded by the National Natural Science Foundation for Distinguished Young Scholars of China (No. 41725006).

Availability of data and materials

The data and codes that support the findings of this study are available with a DOI at <https://doi.org/10.6084/m9.figshare.14134217>.

Declarations**Ethics approval and consent to participate**

No ethics approval or consent to participate was required.

Consent for publication

Not applicable.

Competing interests

The authors declare that they have no competing interests.

Author details

¹State Key Laboratory of Resources and Environmental Information Systems, Institute of Geographic Sciences & Natural Resources Research, Chinese Academy of Sciences, Beijing 100101, China. ²University of Chinese Academy of Sciences, Beijing 100049, China. ³Emergency Department of Peking University International Hospital, Beijing, China.

Received: 21 September 2020 Accepted: 14 March 2021

Published online: 29 March 2021

References

- World Health Organization. Situation report-1. 2020. https://www.who.int/docs/default-source/coronaviruse/situation-reports/20200121-sitrep-1-2019-ncov.pdf?sfvrsn=20a99c10_4. Accessed 17 May 2020.
- World Health Organization. Statement on the second meeting of the international health regulations (2005) emergency committee regarding the outbreak of novel coronavirus (2019-ncov). 2020. [https://www.who.int/news-room/detail/30-01-2020-statement-on-the-second-meeting-of-the-international-health-regulations-\(2005\)-emergency-committee-regarding-the-outbreak-of-novel-coronavirus-\(2019-ncov\)](https://www.who.int/news-room/detail/30-01-2020-statement-on-the-second-meeting-of-the-international-health-regulations-(2005)-emergency-committee-regarding-the-outbreak-of-novel-coronavirus-(2019-ncov)). Accessed 20 April 2020.
- World Health Organization. Naming the coronavirus disease (COVID-19) and the virus that causes it. 2020. [https://www.who.int/emergencies/diseases/novel-coronavirus-2019/technical-guidance/naming-the-coronavirus-disease-\(covid-2019\)-and-the-virus-that-causes-it](https://www.who.int/emergencies/diseases/novel-coronavirus-2019/technical-guidance/naming-the-coronavirus-disease-(covid-2019)-and-the-virus-that-causes-it). Accessed 20 April 2020.
- Tian H, Liu Y, Li Y, Wu CH, Chen B, Kraemer MU, Li B, Cai J, Xu B, Yang Q, Wang B. An investigation of transmission control measures during the first 50 days of the COVID-19 epidemic in China. *Science*. 2020;368(6491):638–42. <https://doi.org/10.1126/science.abb6105>.
- Chinazzi M, Davis JT, Ajelli M, Gioannini C, Litvinova M, Merler S, Pastore y Piontti A, Mu K, Rossi L, Sun K, Viboud C, Xiong X, Yu H, Halloran ME, Longini IM Jr, Vespignani A. The effect of travel restrictions on the spread of the 2019 novel coronavirus (COVID-19) outbreak. *Science*. 2020;368(6489):395–400. <https://doi.org/10.1126/science.aba9757>.
- Kraemer MUG, Yang CH, Gutierrez B, Wu CH, Klein B, Pigott DM, Open COVID-19 Data Working Group†, du Plessis L, Faria NR, Li R, Hanage WP, Brownstein JS, Layan M, Vespignani A, Tian H, Dye C, Pybus OG, Scarpino SV. The effect of human mobility and control measures on the COVID-19 epidemic in China. *Science*. 2020;368(6490):493–7. <https://doi.org/10.1126/science.abb4218>.
- Remuzzi A, Remuzzi G. COVID-19 and Italy: what next? *Lancet*. 2020;395(10231):1225–8. [https://doi.org/10.1016/S0140-6736\(20\)30627-9](https://doi.org/10.1016/S0140-6736(20)30627-9).
- Salathé M, Althaus CL, Neher R, Stringhini S, Hodcroft E, Fellay J, et al. COVID-19 epidemic in Switzerland: on the importance of testing, contact tracing and isolation. *Swiss Med Wkly*. 2020;150:w202205.
- Haines A, de Barros EF, Berlin A, Heymann DL, Harris MJ. National UK programme of community health workers for COVID-19 response. *Lancet*. 2020;395(10231):1173–5. [https://doi.org/10.1016/S0140-6736\(20\)30735-2](https://doi.org/10.1016/S0140-6736(20)30735-2).
- COVID C D C, team R. Severe outcomes among patients with coronavirus disease 2019 (COVID-19)—United States, February 12–march 16, 2020. *MMWR Morb Mortal Wkly Rep*. 2020;69(12):343–6. <https://doi.org/10.15585/mmwr.mm6912e2>.
- World Health Organization. Situation report-133. 2020. https://www.who.int/docs/default-source/coronaviruse/situation-reports/20200601-covid-19-sitrep-133.pdf?sfvrsn=9a56f2ac_4. Accessed 20 June 2020.
- en.nhc.gov.cn. Daily briefing on novel coronavirus cases in China. 2020. http://en.nhc.gov.cn/2020-06/02/c_80573.htm. Accessed 20 June 2020.
- International Monetary Fund. Policy responses to COVID-19. 2020. <https://www.imf.org/en/Topics/imf-and-covid19/Policy-Responses-to-COVID-19>. Accessed 20 June 2020.
- Hellewell J, Abbott S, Gimma A, Bosse NI, Jarvis CI, Russell TW, et al. Feasibility of controlling COVID-19 outbreaks by isolation of cases and contacts. *Lancet Glob Health*. 2020;8(4):e488–96. [https://doi.org/10.1016/S2214-109X\(20\)30074-7](https://doi.org/10.1016/S2214-109X(20)30074-7).
- Ferretti L, Wymant C, Kendall M, Zhao L, Nurtay A, Abeler-Dörner L, et al. Quantifying SARS-CoV-2 transmission suggests pandemic control with digital contact tracing. *Science*. 2020;368(6491):eabb6936.
- Rothe C, Schunk M, Sothmann P, Bretzel G, Froeschl G, Wallrauch C, Zimmer T, Thiel V, Janke C, Guggemos W, Seilmaier M, Drosten C, Vollmar P, Zwirgmaier K, Zange S, Wölfel R, Hoelscher M. Transmission of 2019-nCoV infection from an asymptomatic contact in Germany. *N Engl J Med*. 2020;382(10):970–1. <https://doi.org/10.1056/NEJMc2001468>.
- McKibbin WJ, Fernando R. The global macroeconomic impacts of COVID-19: seven scenarios. *CAMA*. 2020; http://www.sensiblepolicy.com/download/2020/2020WorkingPapers/2020_19_CAMA_COVID19_mckibbin_fernando_0.pdf. Accessed 15 June 2020.
- Atkeson A. What will be the economic impact of covid-19 in the us? Rough estimates of disease scenarios. National Bureau of Economic Research. 2020; <http://accd2007.free.fr/nber26867.pdf>. Accessed 15 June 2020.
- Torales J, O'Higgins M, Castaldelli-Maia JM, Ventriglio A. The outbreak of COVID-19 coronavirus and its impact on global mental health. *Int J Soc Psychiatry*. 2020;66(4):317–20. <https://doi.org/10.1177/0020764020915212>.
- Toda AA. Susceptible-infected-recovered (SIR) dynamics of Covid-19 and economic impact. 2020. <https://arxiv.org/pdf/2003.11221.pdf>. Accessed 15 Apr 2020.
- Nicola M, Alsaifi Z, Sohrabi C, Kerwan A, Al-Jabir A, Iosifidis C, et al. The socio-economic implications of the coronavirus and COVID-19 pandemic: a review. *Int J Surg*. 2020;78:185–93. <https://doi.org/10.1016/j.ijsu.2020.04.018>.
- China daily. Economy rebounding after drop. 2020. http://english.www.gov.cn/archive/statistics/202004/18/content_WS5e9a54a6c6d0b3f0e9495c5c.html. Accessed 18 Apr 2020.
- Xinhua. China's progress on business resumption on May 15. 2020. http://english.www.gov.cn/news/topnews/202005/15/content_WS5e9e94aec6d0b3f0e9497c1a.html. Accessed 15 May 2020.
- CGTN. China's financial data see huge rebound in March. CGTN. 2020. http://english.www.gov.cn/news/videos/202004/11/content_WS5e91b3c4c6d0c201c2cc0b2e.html. Accessed 2 June 2020.
- Guo H. Trump resumes work in "three steps": May 1 may be partially opened, each state decides. 2020. https://www.guanhua.com/international/2020_04_17_547223_1.shtml. Accessed 2 June 2020.
- Wang H. Financial watch: Britain cautiously presses economic "restart button". 2020. http://www.xinhuanet.com/fortune/2020-05/16/c_1125993125.htm. Accessed 2 June 2020.

27. Ma Z. Spatiotemporal fluctuation scaling law and metapopulation modeling of the novel coronavirus (COVID-19) and SARS outbreaks. 2020. <https://arxiv.org/pdf/2003.03714>. Accessed 17 June 2020.
28. Gross B, Zheng Z, Liu S, Chen X, Sela A, Li J, et al. Spatio-temporal propagation of COVID-19 pandemics. 2020. <https://www.medrxiv.org/content/medrxiv/early/2020/04/11/2020.03.23.20041517.full.pdf>. Accessed 17 June 2020.
29. Huang R, Liu M, Ding Y. Spatial-temporal distribution of COVID-19 in China and its prediction: a data-driven modeling analysis. *J Infect Dev Ctries*. 2020; 14(03):246–53. <https://doi.org/10.3855/jidc.12585>.
30. Giuliani D, Dickson MM, Espa G, Santi F. Modelling and Predicting the Spatio-Temporal Spread of Coronavirus Disease 2019 (COVID-19) in Italy. In: Modelling and predicting the spatio-temporal spread of coronavirus disease 2019 (COVID-19) in Italy; 2020. <https://arxiv.org/pdf/2003.06664v2>. Accessed 17 June 2020.
31. Jia JS, Lu X, Yuan Y, Xu G, Jia J, Christakis NA. Population flow drives spatio-temporal distribution of COVID-19 in China. *Nature*. 2020;29:1–5.
32. Kang D, Choi H, Kim JH, Choi J. Spatial epidemic dynamics of the COVID-19 outbreak in China. *Int J Infect Dis*. 2020;3:96–102.
33. Lorch L, Trouleau W, Tsiatsis S, Szanto A, Schölkopf B, Gomez-Rodriguez M. A spatiotemporal epidemic model to quantify the effects of contact tracing, testing, and containment. 2020. <https://arxiv.org/pdf/2004.07641>. Accessed 17 June 2020.
34. Xinhua. China's progress on economic resumption on June 3. 2020. http://english.www.gov.cn/news/topnews/202006/03/content_WS5ed7a40c6d0b3f0e949986b.html. Accessed 3 June 2020.
35. Xinhua. China's Hubei reports no new confirmed COVID-19 cases. 2020. http://english.www.gov.cn/news/topnews/202006/02/content_WS5ed5c54ec6d0b3f0e949947b.html. Accessed 3 June 2020.
36. Xinhua. Chinese mainland reports no new domestically transmitted COVID-19 cases. 2020. http://english.www.gov.cn/statecouncil/ministries/202006/04/content_WS5ed86121c6d0b3f0e949990a.html. Accessed 4 June 2020.
37. Augustine, J., Hourani, K., Molla, A.R., Pandurangan, G. and Pasic, A., Economy versus disease spread: reopening mechanisms for COVID 19. 2020. <https://arxiv.org/abs/2009.08872>. Accessed 28 February 2021.
38. Samuel J, Rahman MM, Ali GMN, Samuel Y, Pelaez A, Chong PHJ, Yakubov M. Feeling positive about reopening? New Normal scenarios from COVID-19 US reopen sentiment analytics. *IEEE Access*. 2020;8:142173–90. <https://doi.org/10.1109/ACCESS.2020.3013933>.
39. Karatayev VA, Anand M, Bauch CT. Local lockdowns outperform global lockdown on the far side of the COVID-19 epidemic curve. *Proc Natl Acad Sci*. 2020;117(39):24575–80. <https://doi.org/10.1073/pnas.2014385117>.
40. Cheng SY, Wang CJ, Shen ACT, Chang SC. How to safely reopen colleges and universities during COVID-19: experiences from Taiwan. *Ann Intern Med*. 2020;173(8):638–41. <https://doi.org/10.7326/M20-2927>.
41. Panovska-Griffiths J, Kerr CC, Stuart RM, Mistry D, Klein DJ, Viner RM, Bonell C. Determining the optimal strategy for reopening schools, the impact of test and trace interventions, and the risk of occurrence of a second COVID-19 epidemic wave in the UK: a modelling study. *Lancet Child Adolesc Health*. 2020;4(11):817–27. [https://doi.org/10.1016/S2352-4642\(20\)30250-9](https://doi.org/10.1016/S2352-4642(20)30250-9).
42. Anderson RM, May RM. *Infectious diseases of humans: dynamics and control*. Oxford: Oxford university press; 1992. p. 1992.
43. Lipsitch M, Cohen T, Cooper B, Robins JM, Ma S, James L, Gopalakrishna G, Chew SK, Tan CC, Samore MH, Fisman D, Murray M. Transmission dynamics and control of severe acute respiratory syndrome. *Science*. 2003;300(5627):1966–70. <https://doi.org/10.1126/science.1086616>.
44. Li Q, Guan X, Wu P, Wang X, Zhou L, Tong Y, Ren R, Leung KSM, Lau EHY, Wong JY, Xing X, Xiang N, Wu Y, Li C, Chen Q, Li D, Liu T, Zhao J, Liu M, Tu W, Chen C, Jin L, Yang R, Wang Q, Zhou S, Wang R, Liu H, Luo Y, Liu Y, Shao G, Li H, Tao Z, Yang Y, Deng Z, Liu B, Ma Z, Zhang Y, Shi G, Lam TTY, Wu JT, Gao GF, Cowling BJ, Yang B, Leung GM, Feng Z. Early transmission dynamics in Wuhan, China, of novel coronavirus-infected pneumonia. *N Engl J Med*. 2020;382(13):1199–207. <https://doi.org/10.1056/NEJMoa2001316>.
45. Lauer SA, Grantz KH, Bi Q, Jones FK, Zheng Q, Meredith HR, Azman AS, Reich NG, Lessler J. The incubation period of 2019-nCoV from publicly reported confirmed cases: estimation and application. *Ann Intern Med*. 2020;172(9):577–82. <https://doi.org/10.7326/M20-0504>.
46. Backer JA, Klinkenberg D, Wallinga J. The incubation period of 2019-nCoV infections among travellers from Wuhan, China. *Eurosurveillance*. 2020;25(5):2000062.
47. Xia W, Sanyi T, Yong C, Xiaomei F, Yanni X, Zongben X. When will be the resumption of work in Wuhan and its surrounding areas during COVID-19 pandemic? A data-driven network modeling analysis. *Scientia Sinica Mathematica*. 2020;50:1–10.
48. Zhang WB, Ge Y, Liu M, et al. Risk assessment of the step-by-step return-to-work policy in Beijing following the COVID-19 epidemic peak. *Stoch Environ Res Risk Assess*. 2021;35:481–98. <https://doi.org/10.1007/s00477-020-01929-3>.
49. Yin Q, Wang JF, Ren ZP, Li J, Guo Y. Mapping the increased minimum mortality temperatures in the context of global climate change. *Nat Commun*. 2019;10(1):1–8.
50. Beijing Municipal Bureau Statistics. Beijing statistical yearbook in 2019. 2019. <http://nj.tj.beijing.gov.cn/nj/main/2019-tjnj/zk/indexch.htm>. Accessed 4 June 2020.
51. Zhu Qingyi, Hu Dengsheng, Center for International Knowledge on Development. Q101: What has China done to prevent the epidemic rebound when orderly resuming work and production and reopening schools?. <http://www.cikd.org/english/detail?leafid=213&docid=1511>. Accessed 1 Mar 2021.

Publisher's Note

Springer Nature remains neutral with regard to jurisdictional claims in published maps and institutional affiliations.

Ready to submit your research? Choose BMC and benefit from:

- fast, convenient online submission
- thorough peer review by experienced researchers in your field
- rapid publication on acceptance
- support for research data, including large and complex data types
- gold Open Access which fosters wider collaboration and increased citations
- maximum visibility for your research: over 100M website views per year

At BMC, research is always in progress.

Learn more biomedcentral.com/submissions

